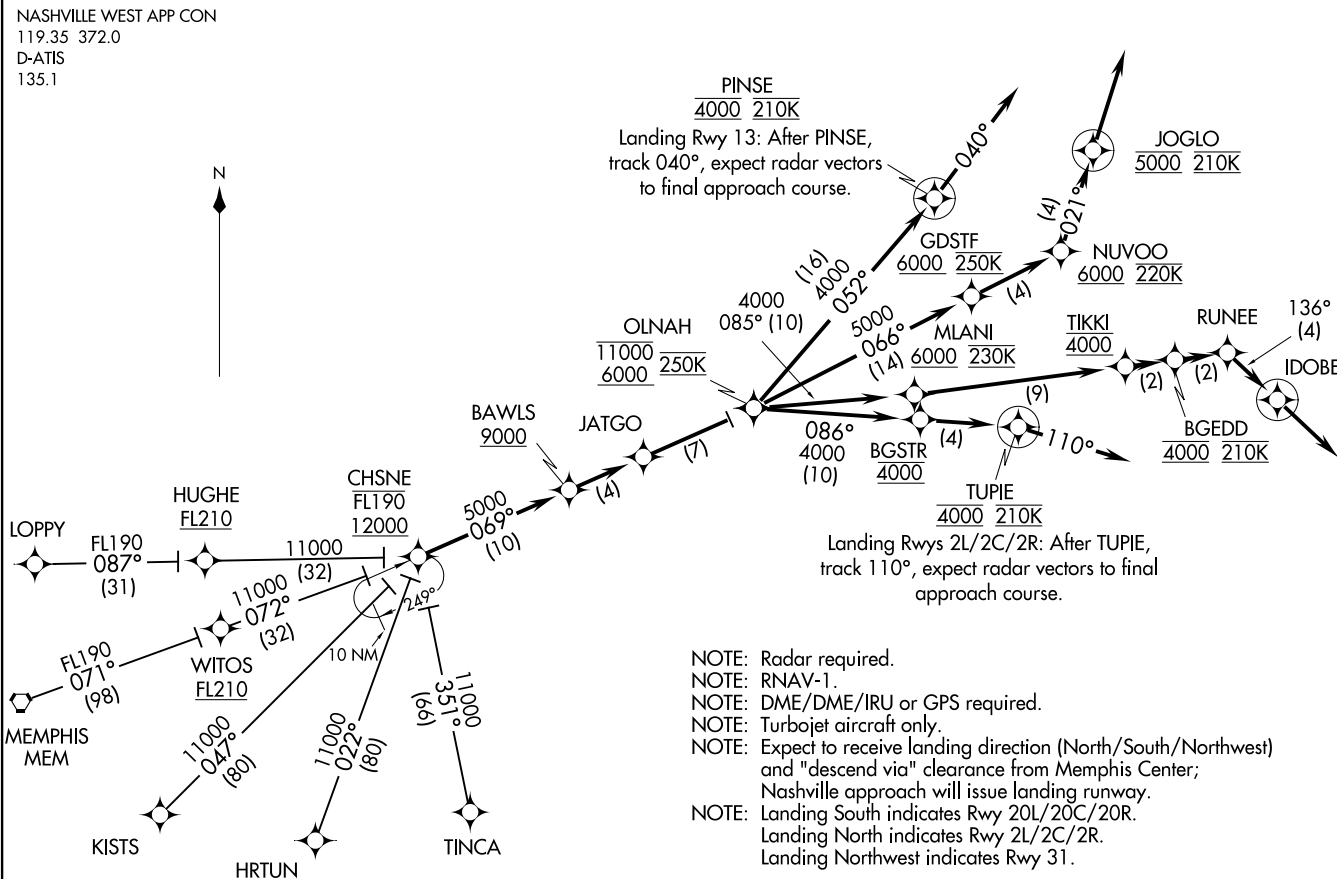


NOTE: Chart not to scale.

(NARRATIVE ON FOLLOWING PAGE)

NOTE: Radar required.
NOTE: RNAV-1.
NOTE: DME/DME/IRU or GPS required.
NOTE: Turbojet aircraft only.
NOTE: Expect to receive landing direction (North/South/Northwest) and "descend via" clearance from Memphis Center; Nashville approach will issue landing runway.
NOTE: Landing South indicates Rwy 20L/20C/20R.
Landing North indicates Rwy 2L/2C/2R.
Landing Northwest indicates Rwy 31.



PINSE
4000 210K
Landing Rwy 13: After PINSE,
track 040°, expect radar vector
to final approach course.

JOGLO
5000 210K

GDSTF  NIVOO

MLANI
6000 230K

0

RUN

(2)

IDOB

Landing Rwys 2L/2C/2R: After TUIPE,
track 110°, expect radar vectors to final
approach course.

NASHVILLE WEST APP CON
119.35 372.0
D-ATIS
135.1

CHSNE TWO ARRIVAL (RNAV)

(CHSNE.CHSNE2) 24JUL14

NASHVILLE, TENNESSEE
NASHVILLE INTL (BNA)

ARRIVAL ROUTE DESCRIPTION

HRTUN TRANSITION (HRTUN.CHSNE2)
KISTS TRANSITION (KISTS.CHSNE2)
LOPPY TRANSITION (LOPPY.CHSNE2)
MEMPHIS TRANSITION (MEM.CHSNE2)
TINCA TRANSITION (TINCA.CHSNE2)

From over CHSNE on track 069° to cross BAWLS at/above 9000, then on track 069° to JATGO, then on track 069° to cross OLNAH at/above 6000 and at/below 11000 and at 250K, then on assigned runway transition.

LANDING NORTH (RWY 2L/2C/2R): From over OLNAH on track 086° to cross BGSTR at 4000, then on track 086° to cross TUPIE at 4000 and at 210K, then on track 110°. Expect radar vectors to final approach course.

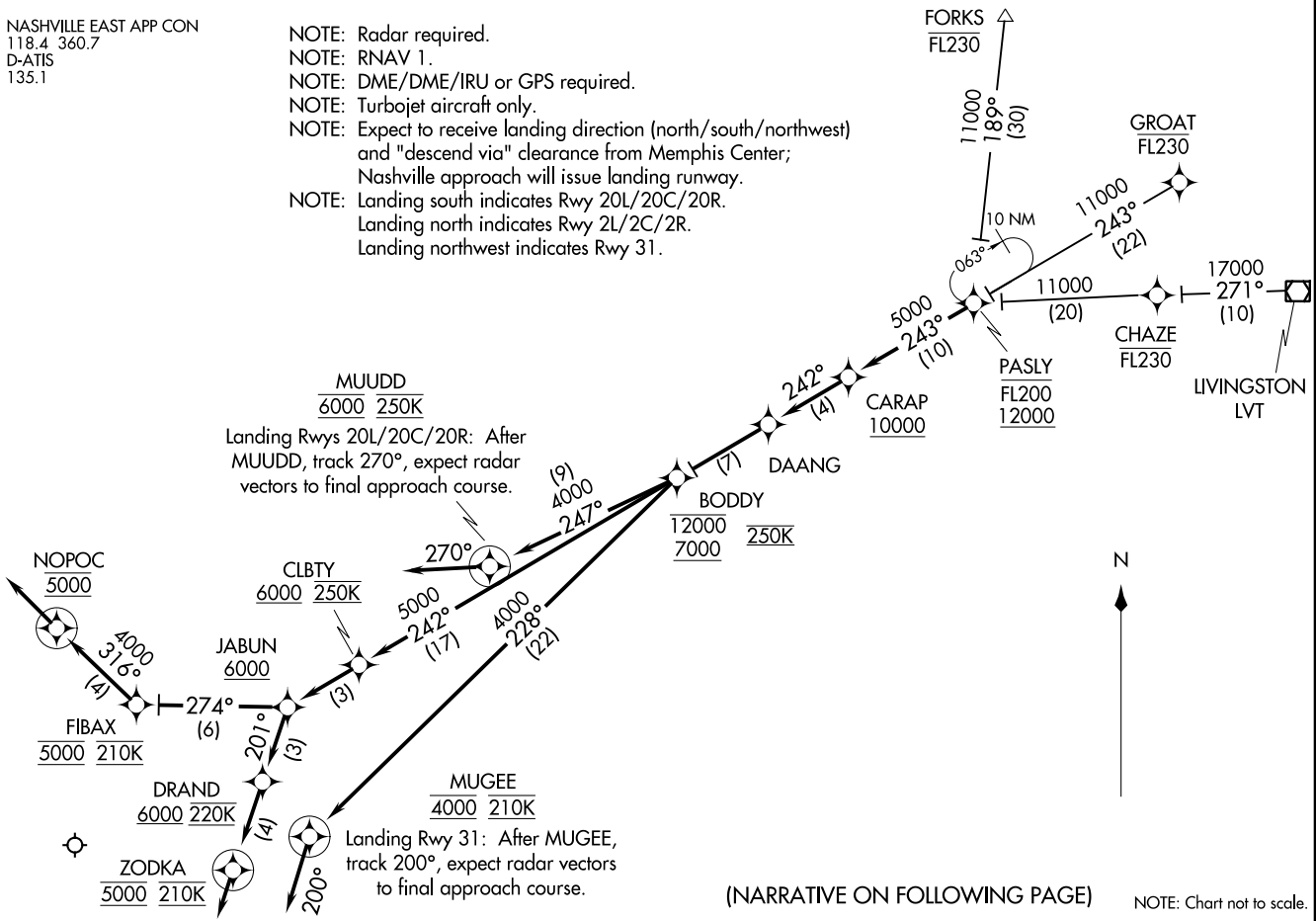
LANDING RWY 13: From over OLNAH on track 052° to cross PINSE at 4000 and at 210K, then on track 040°. Expect radar vectors to final approach course.

LANDING SOUTH (RWY 20L/20C/20R): From over OLNAH on track 066° to cross GDSTF at/above 6000 and at 250K, then on track 066° to cross NUVOO at/above 6000 and at 220K, then on track 021° to cross JOGLO at 5000 and at 210K, then on track 021°. Expect radar vectors to final approach course.

LANDING NORTHWEST (RWY 31): From over OLNAH on track 085° to cross MLANI at/above 6000 and at 230K, then on track 085° to cross TIKKI at 4000, then on track 085° to cross BGEDD at 4000 and at 210K, then on track 085° to RUNEE, then on track 136° to IDOBE, then on track 136°. Expect radar vectors to final approach course.

NASHVILLE EAST APP CON
118.4 360.7
D-ATIS
135.1

- NOTE: Radar required.
NOTE: RNAV 1.
NOTE: DME/DME/IRU or GPS required.
NOTE: Turbojet aircraft only.
NOTE: Expect to receive landing direction (north/south/northwest) and "descend via" clearance from Memphis Center; Nashville approach will issue landing runway.
NOTE: Landing south indicates Rwy 20L/20C/20R.
Landing north indicates Rwy 2L/2C/2R.
Landing northwest indicates Rwy 31.



ARRIVAL ROUTE DESCRIPTION

FORKS TRANSITION (FORKS.PASLY4)
GROAT TRANSITION (GROAT.PASLY4)
LIVINGSTON TRANSITION (LVT.PASLY4)

From over PASLY on track 243° to cross CARAP at/above 10000, then on track 242° to DAANG, then on track 242° to cross BODDY at/above 7000 and at/below 12000 and at 250K, then on assigned runway transition.

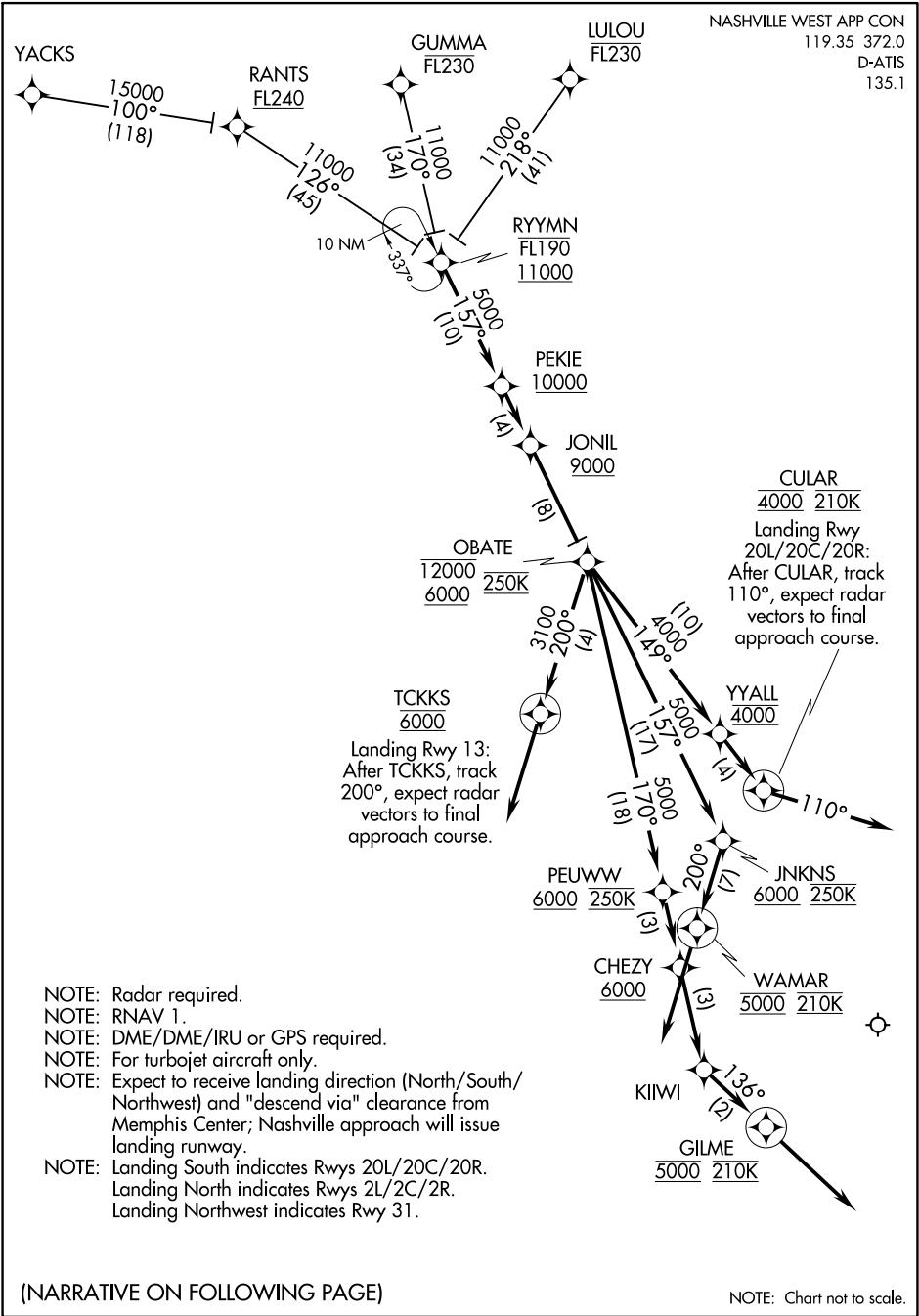
LANDING NORTH RWYS 2L/2C/2R: From over BODDY on track 242° to cross CLBTY at/above 6000 and at 250K, then on track 242° to cross JABUN at/above 6000, then on track 201° to cross DRAND at/above 6000 and at 220K, then on track 201° to cross ZODKA at 5000 and at 210K, then on track 201°. Expect radar vectors to final approach course.

LANDING SOUTH RWYS 20L/20C/20R: From over BODDY on track 247° to cross MUUDD at 6000 and at 250K, then on track 270°. Expect radar vectors to final approach course.

LANDING NORTHWEST RWY 31: From over BODDY on track 228° to cross MUGEE at 4000 and at 210K, then on track 200°. Expect radar vectors to final approach course.

LANDING RWY 13: From over BODDY on track 242° to cross CLBTY at/above 6000 and at 250K, then on track 242° to cross JABUN at/above 6000, then on track 274° to cross FIBAX at 5000 and at 210K, then on track 316° to cross NOPOC at 5000, then on track 316°. Expect radar vectors to final approach course.

RYYMN TWO ARRIVAL (RNAV)



ARRIVAL ROUTE DESCRIPTION

- GUMMA TRANSITION (GUMMA.RYYMN2)
- LULOU TRANSITION (LULOU.RYYMN2)
- RANTS TRANSITION (RANTS.RYYMN2)
- YACKS TRANSITION (YACKS.RYYMN2)

From over RYYMN on track 157° to PEKIE at/above 10000, then on track 157° to cross JONIL at/above 9000, then on track 157° to cross OBATE at/above 6000 and at/below 12000 and at 250K, then on assigned runway transition.

LANDING NORTH (RWY 2L/2C/2R): From over OBATE on track 157° to cross JNKNS at/above 6000 and at 250K, then on track 200° to cross WAMAR at 5000 and 210K, then on track 200°. Expect radar vectors to final approach course.

LANDING SOUTH (RWY 20L/20C/20R): From over OBATE on track 149° to cross YYALL at 4000, then on track 149° to cross CULAR at 4000 and at 210K, then on track 110°. Expect radar vectors to final approach course.

LANDING NORTHWEST (RWY 31): From over OBATE on track 170° to cross PEUWW at/above 6000 and at 250K, then on track 170° to cross CHEZY at/above 6000, then on track 170° to KIIWI, then on track 136° to cross GILME at 5000 and at 210K, then on track 136°, expect radar vectors to final approach course.

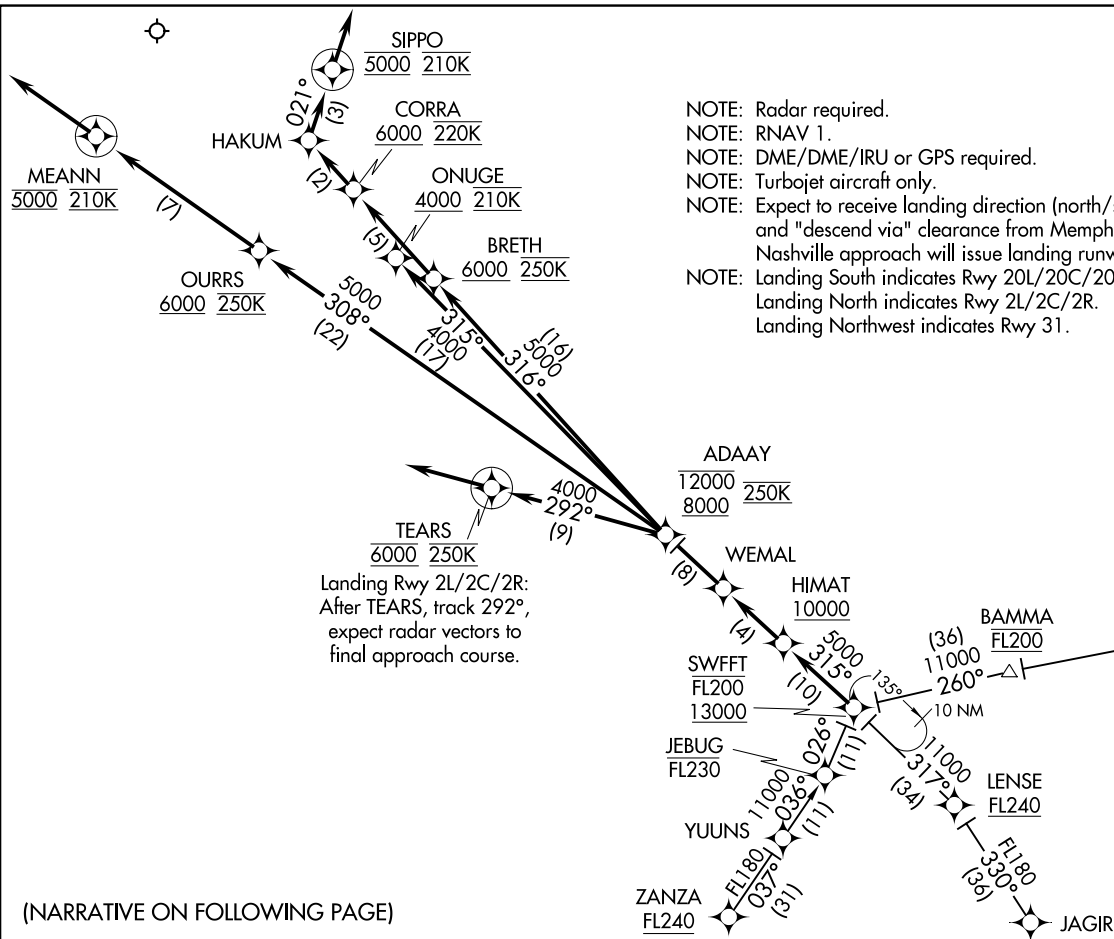
LANDING RWY 13: From over OBATE on track 200° to cross TCKKS at 6000, then on track 200°. Expect radar vectors to final approach course.

NASHVILLE EAST APP CON
118.4 360.7
D-ATIS
135.1

NOTE: Radar required.
NOTE: RNAV 1.
NOTE: DME/DME/IRU or GPS required.
NOTE: Turbojet aircraft only.
NOTE: Expect to receive landing direction (north/south/northwest)
and "descend via" clearance from Memphis Center;
Nashville approach will issue landing runway.
NOTE: Landing South indicates Rwy 20L/20C/20R.
Landing North indicates Rwy 2L/2C/2R.
Landing Northwest indicates Rwy 31.



NOTE: Chart not to scale.



(NARRATIVE ON FOLLOWING PAGE)

ARRIVAL ROUTE DESCRIPTION

- JAGIR TRANSITION (JAGIR.SWFFT2)
- VOLUNTEER TRANSITION (VXV.SWFFT2)
- ZANZA TRANSITION (ZANZA.SWFFT2)

From over SWFFT on track 315° to cross HIMAT at/above 10000, then on track 315° to WEMAL, then on track 315° to cross ADAAY at/above 8000 and at/below 12000 and at 250K, then on assigned runway transition.

LANDING NORTH (RWYS 2L/2C/2R): From over ADAAY on track 292° to cross TEARS at 6000 and 250K, then on track 292°. Expect radar vectors to final approach course.

LANDING SOUTH (RWYS 20L/20C/20R): From over ADAAY on track 316° to cross BRETH at/above 6000 and at 250K, then on track 316° to cross CORRA at/above 6000 and at 220K, then on track 316° to HAKUM, then on track 021° to cross SIPPO at 5000 and at 210K, then on track 021°. Expect radar vectors to final approach course.

LANDING NORTHWEST (RWY 31): From over ADAAY on track 315° to cross ONUGE at/above 4000 and at 210K. Expect ILS or LOC RWY 31 approach.

LANDING RWY 13: From over ADAAY on track 308° to cross OURRS at/above 6000 and at 250K, then on track 308° to cross MEANN at 5000 and at 210K, then on track 308°. Expect radar vectors to final approach course.

SE-1, 22 FEB 2024 to 21 MAR 2024

SE-1, 22 FEB 2024 to 21 MAR 2024