

SHRPE

FL180  
240°  
(53)

PYTNN

FL180  
240°  
(38)

ELWAY

14000  
238°  
(52)

BRNKO  
16000  
14000

See following page  
for arrival routes

NOTE: RADAR required.  
NOTE: RNAV 1.  
NOTE: GPS required.  
NOTE: Turbojet aircraft only.

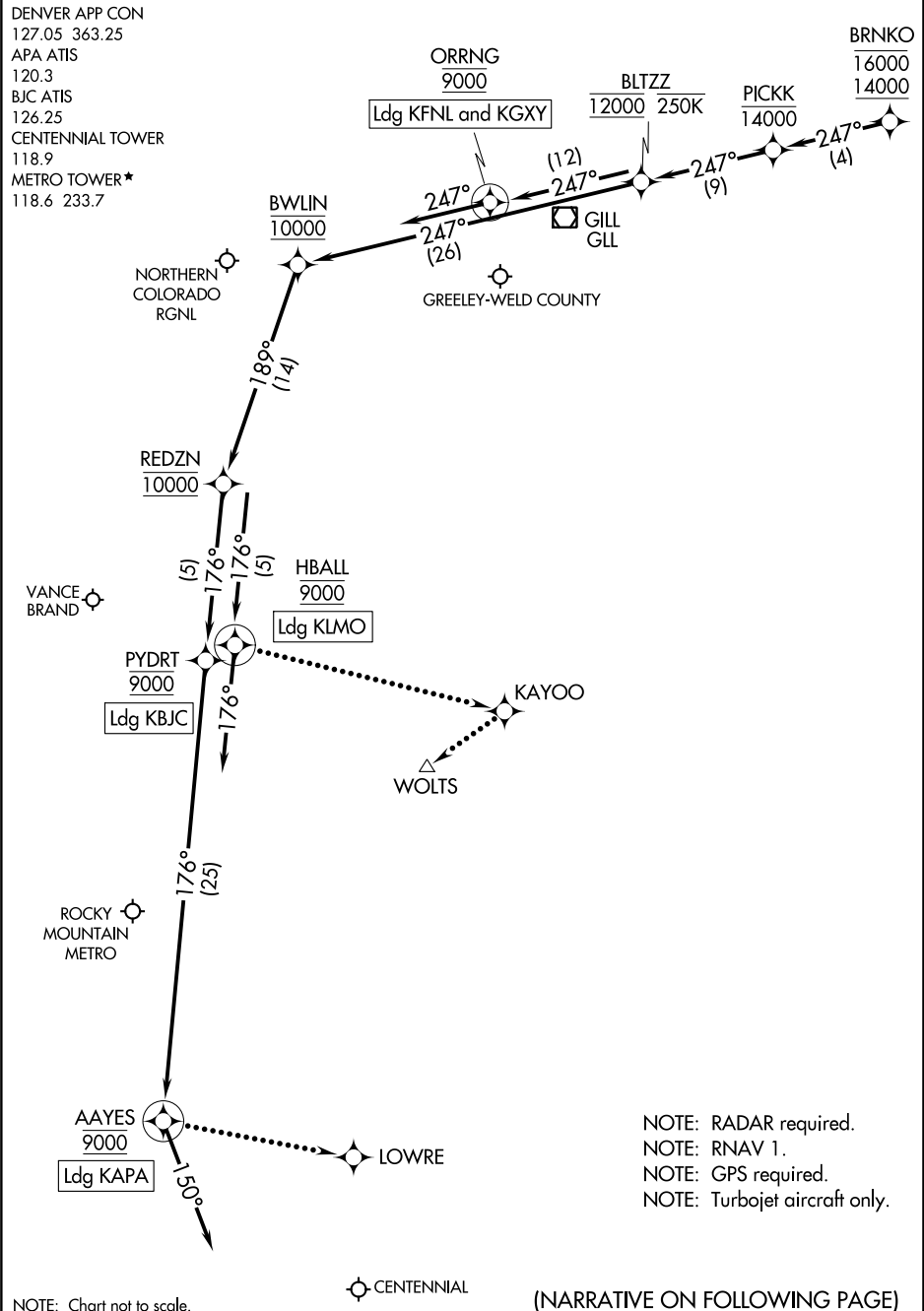
NOTE: Chart not to scale.

SHRPE TRANSITION (SHRPE.BRNKO2)

(CONTINUED ON FOLLOWING PAGE)



DENVER APP CON  
127.05 363.25  
APA ATIS  
120.3  
BJC ATIS  
126.25  
CENTENNIAL TOWER  
118.9  
METRO TOWER ★  
118.6 233.7



ARRIVAL ROUTE DESCRIPTION

LANDING KAPA: From BRNKO on track 247° to cross PICKK at or below 14000, then on track 247° to cross BLTZZ at 12000 and at or below 250K, then on track 247° to cross BWLIN at 10000, then on track 189° to cross REDZN at 10000, then on track 176° to cross PYDRT at 9000, then on track 176° to cross AAYES at 9000, then on track 150°. Expect RADAR vectors to final approach course.

LANDING KBJC: From BRNKO on track 247° to cross PICKK at or below 14000, then on track 247° to cross BLTZZ at 12000 and at or below 250K, then on track 247° to cross BWLIN at 10000, then on track 189° to cross REDZN at 10000, then on track 176° to cross PYDRT at 9000. Expect RNAV (GPS) RWY 12L approach or visual approach as assigned by ATC.

LANDING KFNL/KGXY: From BRNKO on track 247° to cross PICKK at or below 14000, then on track 247° to cross BLTZZ at 12000 and at or below 250K , then on track 247° to cross ORRNG at 9000, then on track 247°. Expect RADAR vectors to final approach course.

LANDING KLMO: From BRNKO on track 247° to cross PICKK at or below 14000, then on track 247° to cross BLTZZ at 12000 and at or below 250K, then on track 247° to cross BWLIN at 10000, then on track 189° to cross REDZN at 10000, then on track 176° to cross HBALL at 9000, then on track 176°. Expect RADAR vectors to final approach course.

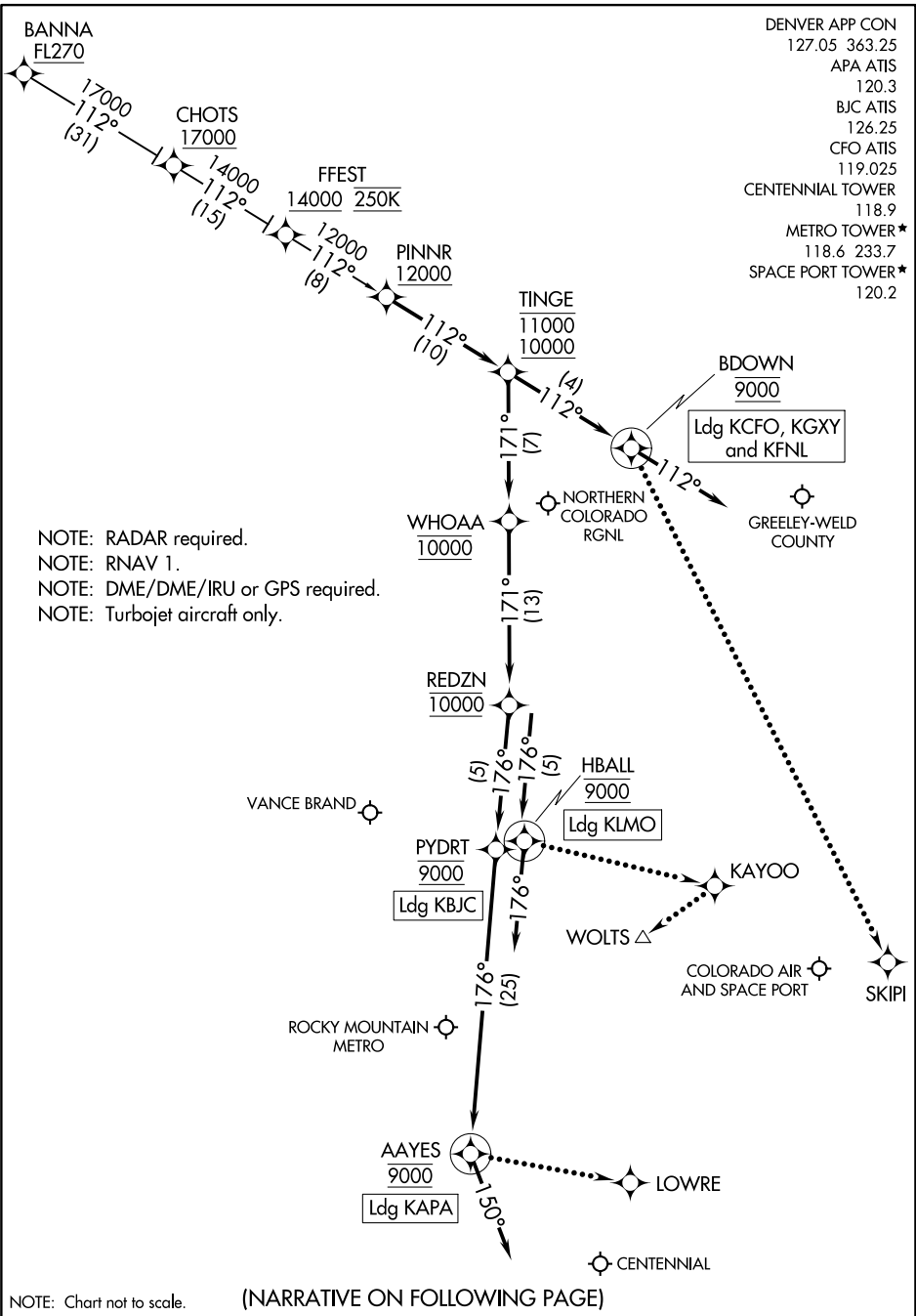
LOST COMMUNICATIONS

LANDING KAPA: From AAYES direct LOWRE and execute RNAV (GPS) RWY 17L approach.

LANDING KBJC: From PYDRT execute RNAV (GPS) RWY 12L approach.

LANDING KLMO: From HBALL direct KAYOO direct WOLTS and execute RNAV (GPS) RWY 29 approach.

LANDING KFNL/KGXY: Proceed to GLL VOR/DME, execute approach.



NOTE: Chart not to scale. (NARRATIVE ON FOLLOWING PAGE)

ARRIVAL ROUTE DESCRIPTION

BANNA TRANSITION (BANNA.PINNR3)

LANDING KAPA: From PINNR on track 112° to cross TINGE between 10000 and 11000, then on track 171° to cross WHOAA at 10000, then on track 171° to cross REDZN at 10000, then on track 176° to cross PYDRT at 9000, then on track 176° to cross AAYES at 9000, then on track 150°. Expect RADAR vectors to final approach course.

LANDING KBJC: From PINNR on track 112° to cross TINGE between 10000 and 11000, then on track 171° to cross WHOAA at 10000, then on track 171° to cross REDZN at 10000, then on track 176° to cross PYDRT at 9000. Expect RNAV (GPS) RWY 12L approach or visual approach as assigned by ATC.

LANDING KFNL/KCFO/KGXY: From PINNR on track 112° to cross TINGE between 10000 and 11000, then on track 112° to cross BDOWN at 9000, then on track 112°. Expect RADAR vectors to final approach course.

LANDING KLMO: From PINNR on track 112° to cross TINGE between 10000 and 11000, then on track 171° to cross WHOAA at 10000, then on track 171° to cross REDZN at 10000, then on track 176° to cross HBALL at 9000, then on track 176°. Expect RADAR vectors to final approach course.

LOST COMMUNICATIONS

LANDING KAPA: From AAYES direct LOWRE and execute RNAV (GPS) RWY 17L approach.

LANDING KBJC: From PYDRT execute RNAV (GPS) RWY 12L approach.

LANDING KCFO: From BDOWN direct SKIPI and execute ILS or LOC RWY 26 approach.

LANDING KLMO: From HBALL direct KAYOO direct WOLTS and execute RNAV (GPS) RWY 29 approach.