

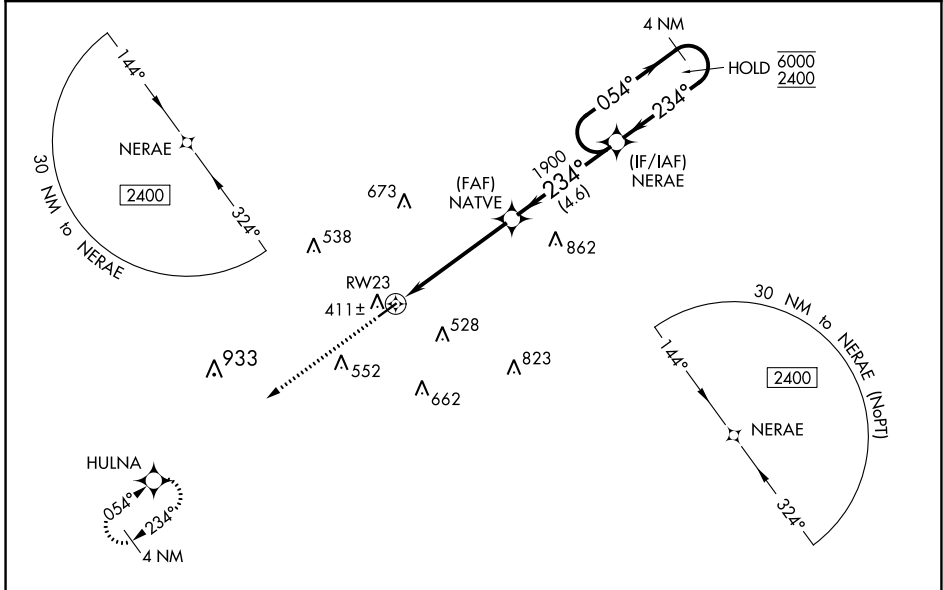
WAAS CH <b>56236</b> <b>W23A</b>	APP CRS <b>234°</b>	Rwy Idg TDZE Apt Elev	<b>5500</b> <b>270</b> <b>270</b>
--	------------------------	-----------------------------	---

# RNAV (GPS) RWY 23

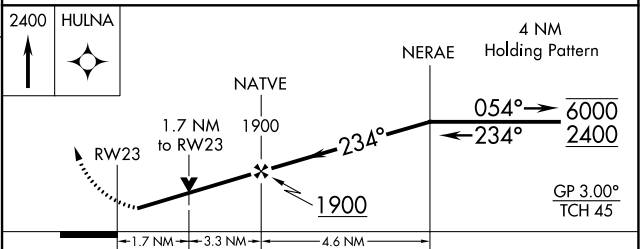
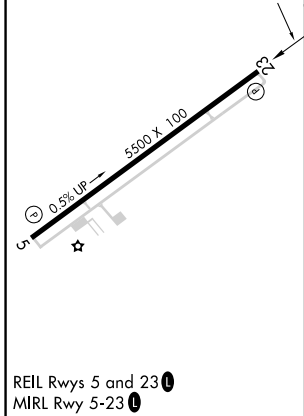
COLUMBIA/MARION COUNTY (ØRØ)

RNP APCH - GPS.	MISSED APPROACH: Climb to 2400 direct HULNA and hold.
<p><b>▽</b></p> <p><b>▲</b> For uncompensated Baro-VNAV systems, LNAV/VNAV NA below -15°C or above 54°C. Rwy 23 helicopter visibility reduction below ¾ SM NA.</p>	

AWOS-3PT <b>120.675</b>	HOUSTON CENTER <b>126.8 327.8</b>	UNICOM <b>122.8 (CTAF) Ø</b>
----------------------------	--------------------------------------	---------------------------------



ELEV 270	TDZE 270
----------	----------



CATEGORY	A	B	C	D
LPV DA		588-7/8	318 (400-7/8)	
LNAV/VNAV DA		761-13/8	491 (500-13/8)	
LNAV MDA	860-1	590 (600-1)	860-13/4	590 (600-13/4)
<b>C</b> CIRCLING	860-1	590 (600-1)	920-13/4	980-21/4
			650 (700-13/4)	710 (800-21/4)

SC-4, 22 FEB 2024 to 21 MAR 2024

SC-4, 22 FEB 2024 to 21 MAR 2024