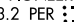
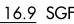


GULLI TWO ARRIVAL

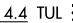
OKLAHOMA CITY, OKLAHOMA

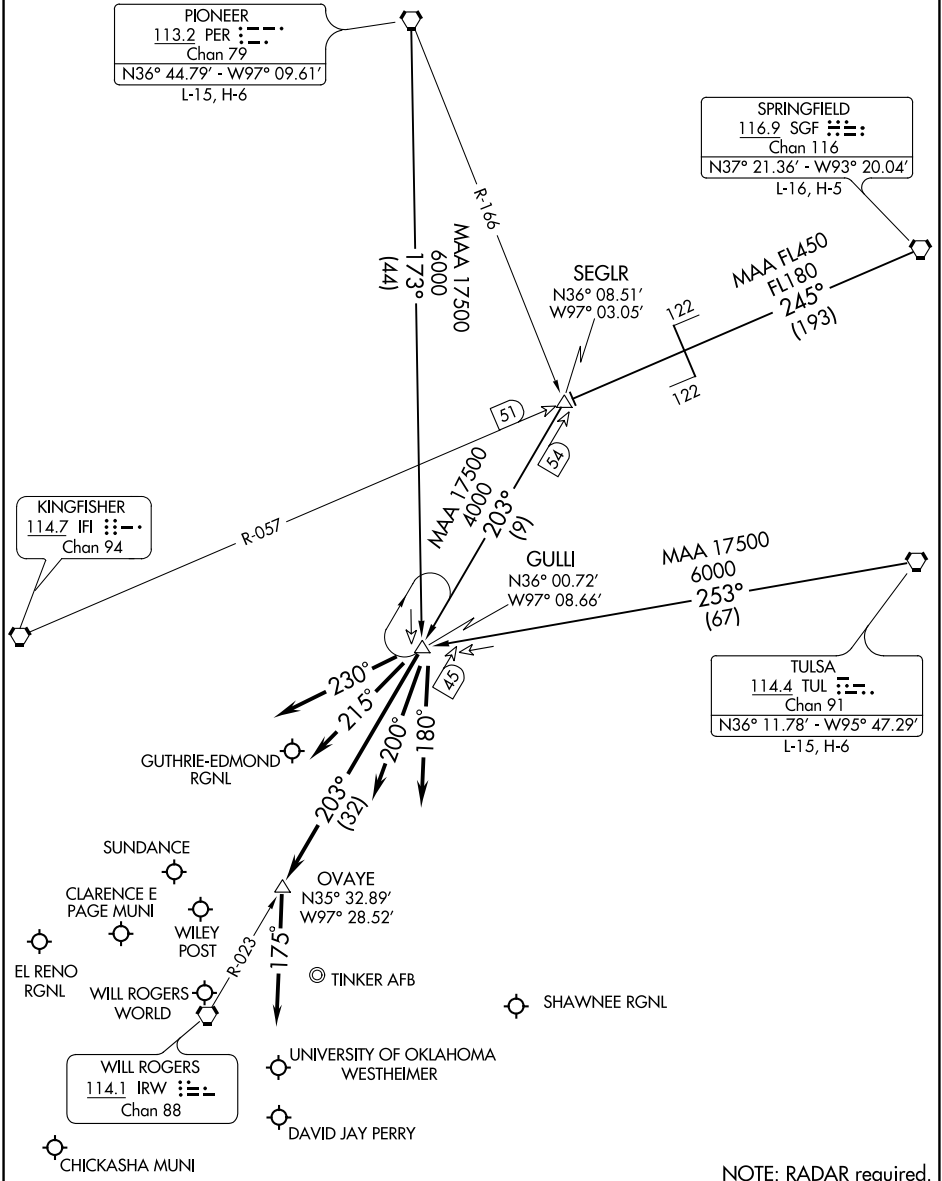
OKC APP CON
124.2 336.4

PIONEER
113.2 PER 
Chan 79
N36° 44.79' - W97° 09.61'
L-15, H-6

SPRINGFIELD
116.9 SGF 
Chan 116
N37° 21.36' - W93° 20.04'
L-16, H-5

KINGFISHER
114.7 IFI 
Chan 94

TULSA
114.4 TUL 
Chan 91
N36° 11.78' - W95° 47.29'
L-15, H-6



SC-1, 07 OCT 2021 to 04 NOV 2021

SC-1, 07 OCT 2021 to 04 NOV 2021

(NARRATIVE ON FOLLOWING PAGE)

NOTE: RADAR required.

NOTE: Chart not to scale.

GULLI TWO ARRIVAL

(GULLI.GULLI2) 29MAR18

OKLAHOMA CITY, OKLAHOMA

GULLI TWO ARRIVAL

ARRIVAL DESCRIPTION

PIONEER TRANSITION (PER.GULLI2): From over PER VORTAC on PER R-173 to GULLI. Thence

SPRINGFIELD TRANSITION (SGF.GULLI2): From over SGF VORTAC on SGF R-245 and IFI R-057 to SEGLR, then on IRW R-023 to GULLI. Thence

TULSA TRANSITION (TUL.GULLI2): From over TUL VORTAC on TUL R-253 to GULLI. Thence

ALL AIRCRAFT LANDING NORTH:

. . . . For GOK, HSD, PWA, RCE, CHK airports: Depart GULLI heading 230° for vector to final approach course.

. . . . For OKC, OUN, 1K4, airports: Depart GULLI on IRW R-023 to OVAYE then heading 175° for vector to final approach course.

. . . . For TIK, SNL airports: Depart GULLI heading 180° for vector to final approach course.

ALL AIRCRAFT LANDING SOUTH:

. . . . For GOK, HSD, PWA, RCE, RQO, CHK airports: Depart GULLI heading 230° for vector to final approach course.

. . . . For OKC, OUN, 1K4 airports: Depart GULLI heading 215° for vector to final approach course.

. . . . For TIK, SNL airports: Depart GULLI heading 200° for vector to final approach course.

SC-1, 07 OCT 2021 to 04 NOV 2021

SC-1, 07 OCT 2021 to 04 NOV 2021