

APP CRS	Rwy Idg	<b>4098</b>
<b>238°</b>	TDZE	<b>1125</b>
	Apt Elev	<b>1125</b>

# RNAV (GPS) RWY 24

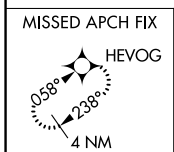
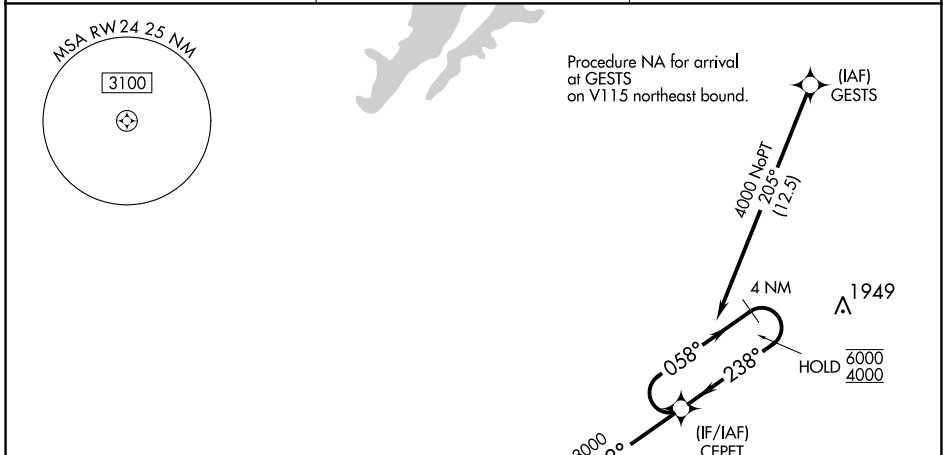
ROBBINS FLD (20A)

RNP APCH.

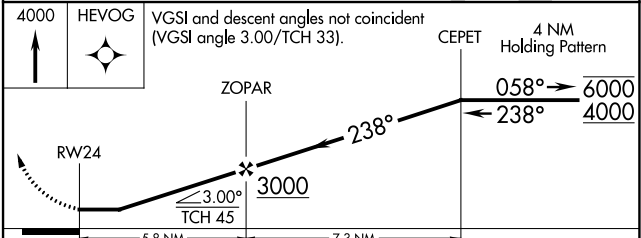
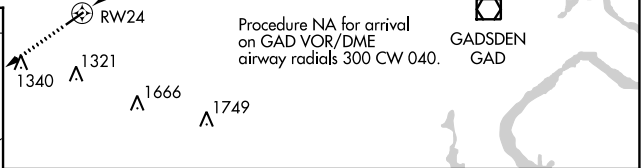
Procedure NA at night. Use Albertville Rgnl/Thomas J Brumlik Fld altimeter setting, when not received, use Northeast Alabama Rgnl altimeter setting and increase all MDA 60 feet and increase LNAV Cat B visibility ¼ SM, Cat C Circling visibility ¼ SM. Rwy 24 helicopter visibility reduction below 1 SM NA.

MISSED APPROACH: Climb to 4000 direct HEVOG and hold.

8A0 AWOS-3PT <b>119.575</b>	BIRMINGHAM APP CON <b>125.45 279.65</b>	UNICOM <b>122.8 (CTAF)</b>
--------------------------------	--	-------------------------------



ELEV	<b>1125</b>	D	TDZE	<b>1125</b>
------	-------------	---	------	-------------



CATEGORY	A	B	C	D
LNAV MDA	1820-1	695 (700-1)	1820-2 695 (700-1)	NA
CIRCLING	1820-1	695 (700-1)	1820-2 695 (700-1)	NA

SE-4, 22 FEB 2024 to 21 MAR 2024

SE-4, 22 FEB 2024 to 21 MAR 2024

APP CRS	Rwy Idg	<b>4098</b>
<b>058°</b>	TDZE	<b>1121</b>
	Apt Elev	<b>1125</b>

# RNAV (GPS) RWY 6

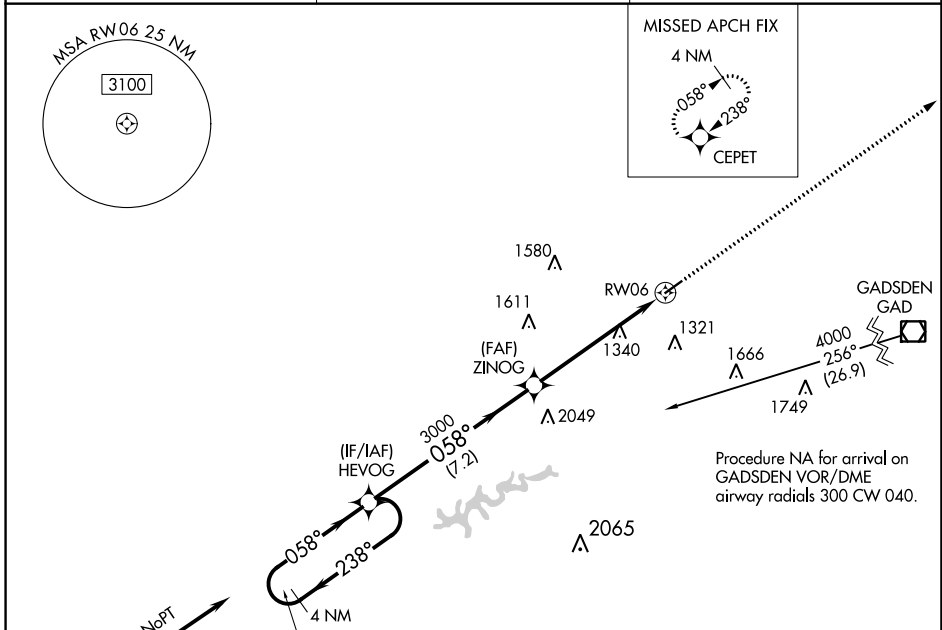
ROBBINS FLD (20A)

RNP APCH.

**NA** Procedure NA at night. Use Albertville Rgnl/Thomas J Brumlik Fld altimeter setting, when not received, use Northeast Alabama Rgnl altimeter setting and increase all MDAs 60 feet, increase LNAV Cat C 1/2 SM. Rwy 6 helicopter visibility reduction below 1 SM NA.

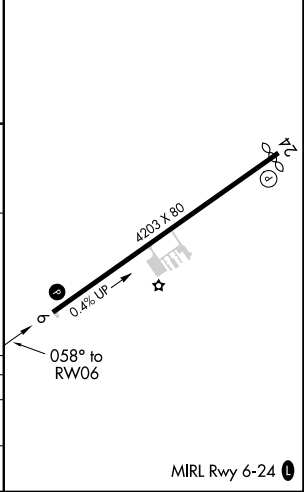
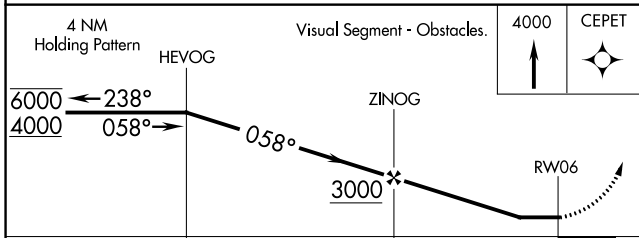
MISSED APPROACH: Climb to 4000 direct CEPET and hold.

8A0 AWOS-3PT <b>119.575</b>	BIRMINGHAM APP CON <b>125.45 279.65</b>	UNICOM <b>122.8 (CTAF)</b>
--------------------------------	--	-------------------------------



Procedure NA for arrival on VUZ VORTAC airway radials 333 CW 137.

ELEV 1125	<b>D</b>	TDZE 1121
-----------	----------	-----------



	7.2 NM		5.8 NM	
CATEGORY	A	B	C	D
LNAV MDA	1760-1	639 (700-1)	1760-1 1/8 639 (700-1 1/8)	NA
CIRCLING	1760-1	635 (700-1)	1800-2 675 (700-2)	NA

SE-4, 22 FEB 2024 to 21 MAR 2024

SE-4, 22 FEB 2024 to 21 MAR 2024