

WAAS CH <b>86524</b> <b>W27A</b>	APP CRS <b>268°</b>	Rwy Idg <b>5000</b> TDZE <b>2925</b> Apt Elev <b>2933</b>
--	------------------------	--

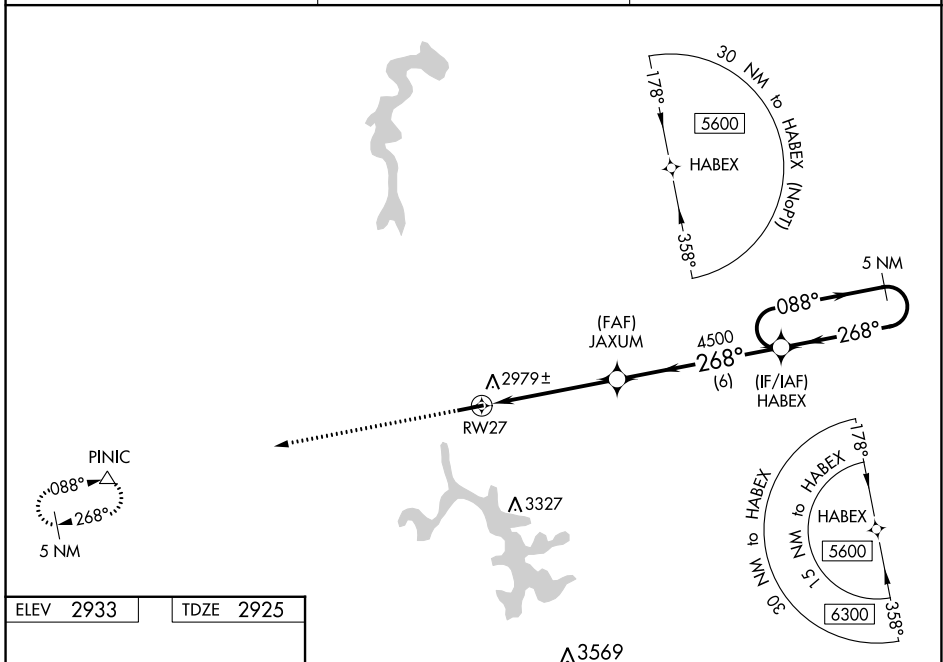
# RNAV (GPS) RWY 27

GARRETT COUNTY (2G4)

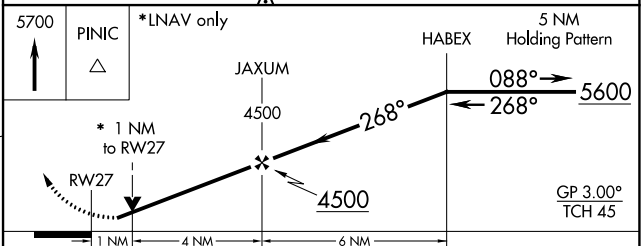
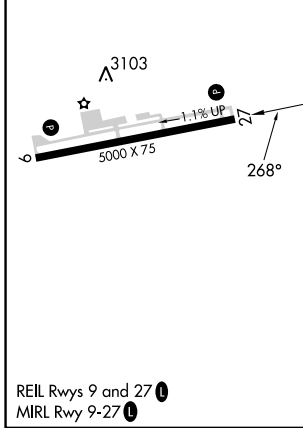
**⚠** Baro-VNAV and VDP NA when using Morgantown altimeter setting. For uncompensated Baro-VNAV systems, LNAV/VNAV NA below -20°C (-4°F) or above 54°C (130°F).  
**⚠** Helicopter visibility reduction below 3/4 SM NA. DME/DME RNP-0.3 NA. When local altimeter setting not received, use Morgantown altimeter setting and increase all DA and all MDA 300 feet. Increase LPV and LNAV/VNAV all Cats visibility 1 1/2 mile, LNAV Cat C visibility 3/8 mile and Circling Cat C visibility 1 mile.

**MISSED APPROACH:**  
Climb 5700 direct PINIC and hold.

AWOS-3 <b>120.125</b>	CLARKSBURG APP CON ★ <b>119.425 284.65</b>	UNICOM <b>123.0</b> (CTAF) <b>📻</b>
--------------------------	---	--



ELEV 2933	TDZE 2925
-----------	-----------



CATEGORY	A	B	C	D
LPV DA	3175-1	250 (300-1)		NA
LNAV/VNAV DA	3197-1	272 (300-1)		NA
LNAV MDA	3240-1	315 (400-1)		NA
<b>C</b> CIRCLING	3340-1 407 (500-1)	3400-1 467 (500-1)	3500-1 1/2 567 (600-1 1/2)	NA

NE-3, 22 FEB 2024 to 21 MAR 2024

NE-3, 22 FEB 2024 to 21 MAR 2024

WAAS CH <b>69624</b> <b>W09A</b>	APP CRS <b>088°</b>	Rwy Idg <b>5000</b> TDZE <b>2933</b> Apt Elev <b>2933</b>
--	------------------------	---

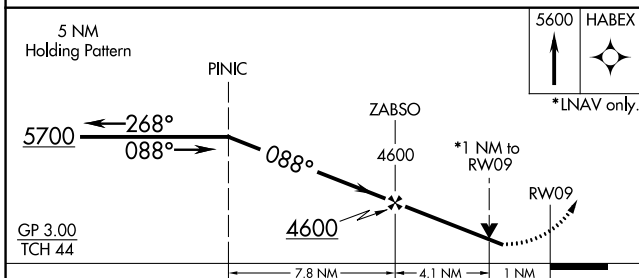
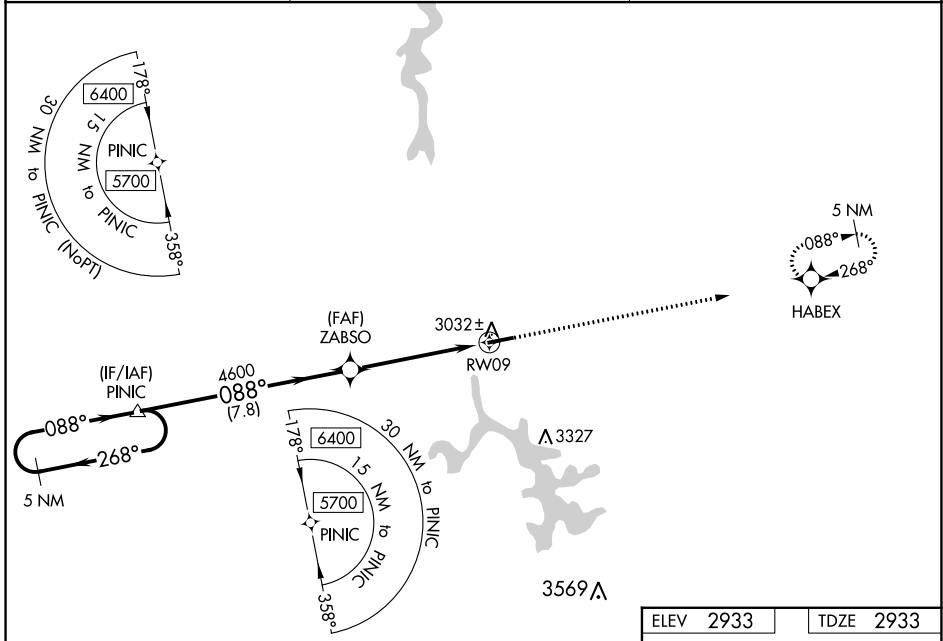
# RNAV (GPS) RWY 9

GARRETT COUNTY (2G4)

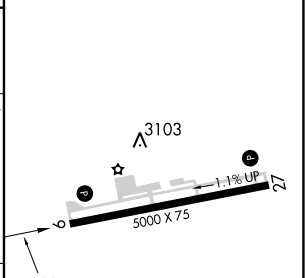
**▼** Baro-VNAV and VDP NA when using Morgantown altimeter setting. For uncompensated Baro-VNAV systems, LNAV/VNAV NA below -20° (-4°F) or above 54°C (130°F). Helicopter visibility reduction below ¾ SM NA. DME/DME RNP -0.3 NA. When local altimeter setting not received, use Morgantown altimeter setting and increase all DA and MDA 300 feet. Increase LPV and LNAV/VNAV all Cats visibility 1½ mile, LNAV Cat C visibility ¾ mile and Circling Cat C visibility 1 mile.

**▲ NA** MISSED APPROACH: Climb to 5600 direct HABEX and hold.

AWOS-3 <b>120.125</b>	CLARKSBURG APP CON ★ <b>119.425 284.65</b>	UNICOM <b>123.0 (CTAF) 0</b>
--------------------------	---	---------------------------------



ELEV 2933	TDZE 2933
-----------	-----------



CATEGORY	A	B	C	D
LPV DA	3183-¾	250 (300-¾)		NA
LNAV/VNAV DA	3183-¾	250 (300-¾)		NA
LNAV MDA	3300-1	367 (400-1)		NA
<b>C</b> CIRCLING	3340-1 407 (500-1)	3400-1 467 (500-1)	3500-1½ 567 (600-1½)	NA

REIL Rwy 9 and 27 **0**  
MIRL Rwy 9-27 **0**

NE-3, 22 FEB 2024 to 21 MAR 2024

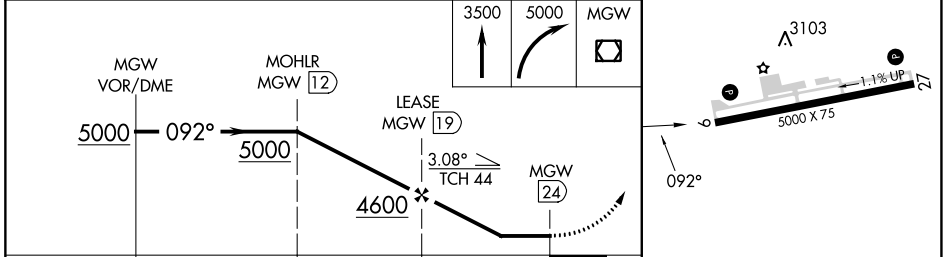
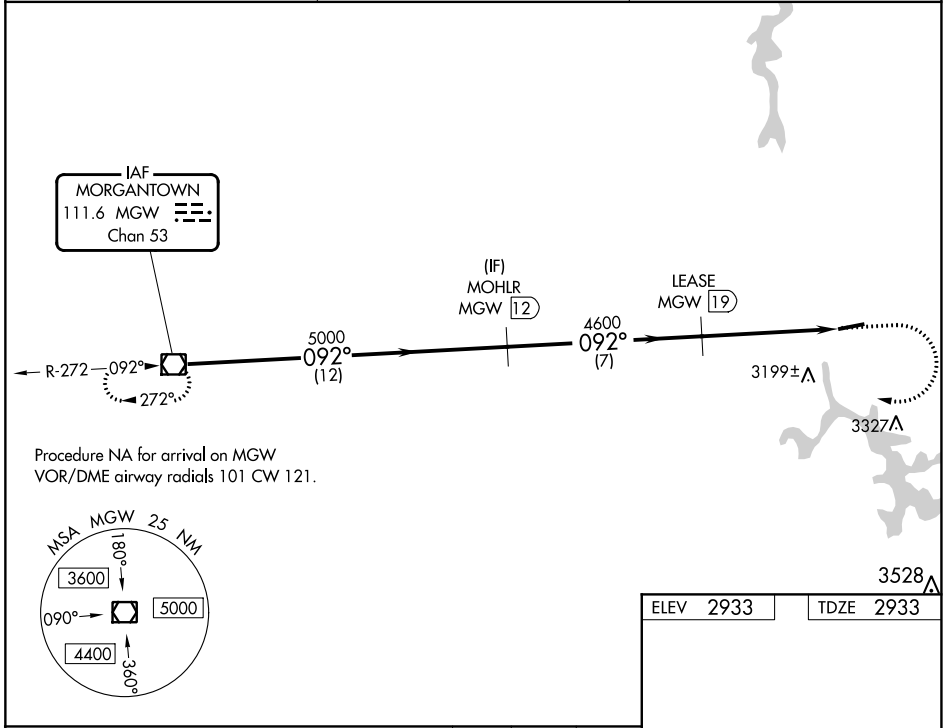
NE-3, 22 FEB 2024 to 21 MAR 2024

VOR/DME MGW <b>111.6</b> Chan <b>53</b>	APP CRS <b>092°</b>	Rwy Idg TDZE Apt Elev <b>5000</b> <b>2933</b> <b>2933</b>
---	------------------------	--

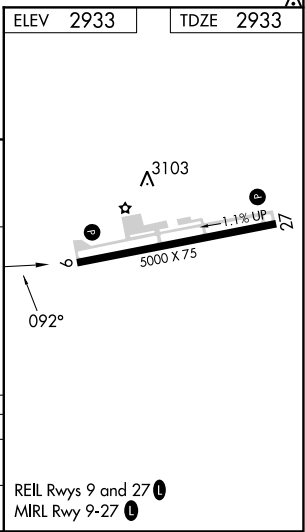
**VOR RWY 9**  
GARRETT COUNTY (2G4)

DME required.	MISSED APPROACH: Climb to 3500 then climbing right turn to 5000 direct MGW VOR/DME and hold.
<p><b>T</b> Rwy 09 helicopter visibility reduction below 3/4 SM NA. When local altimeter setting not received, use Morgantown altimeter setting and increase all MDA 300 feet; increase S-09 Cat B and Circling Cat A and B visibility 1/4 SM and S-09 and Circling Cat C visibility 1 SM.</p>	

AWOS-3 <b>120.125</b>	CLARKSBURG APP CON * <b>119,425 284,65</b>	UNICOM <b>123.0 (CTAF) 0</b>
--------------------------	---	---------------------------------



CATEGORY	A	B	C	D
S-09	3460-1	527 (600-1)	3460-1½ 527 (600-1½)	NA
<b>C</b> CIRCLING	3460-1	527 (600-1)	3500-1½ 567 (600-1½)	NA



NE-3, 22 FEB 2024 to 21 MAR 2024

NE-3, 22 FEB 2024 to 21 MAR 2024