

WAAS CH 70641 W17A	APP CRS 172°	Rwy Idg TDZE Apt Elev	5399 3677 3677
--	------------------------	-----------------------------	---

RNAV (GPS) RWY 17

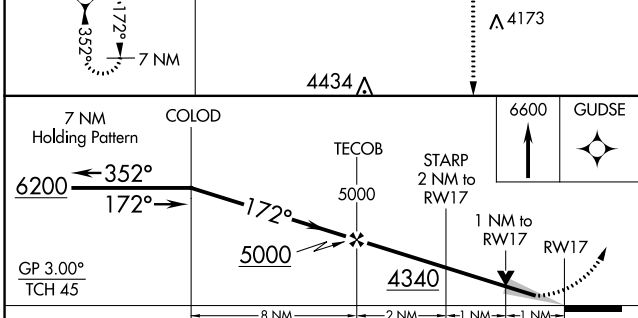
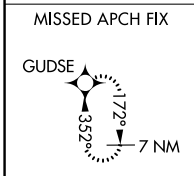
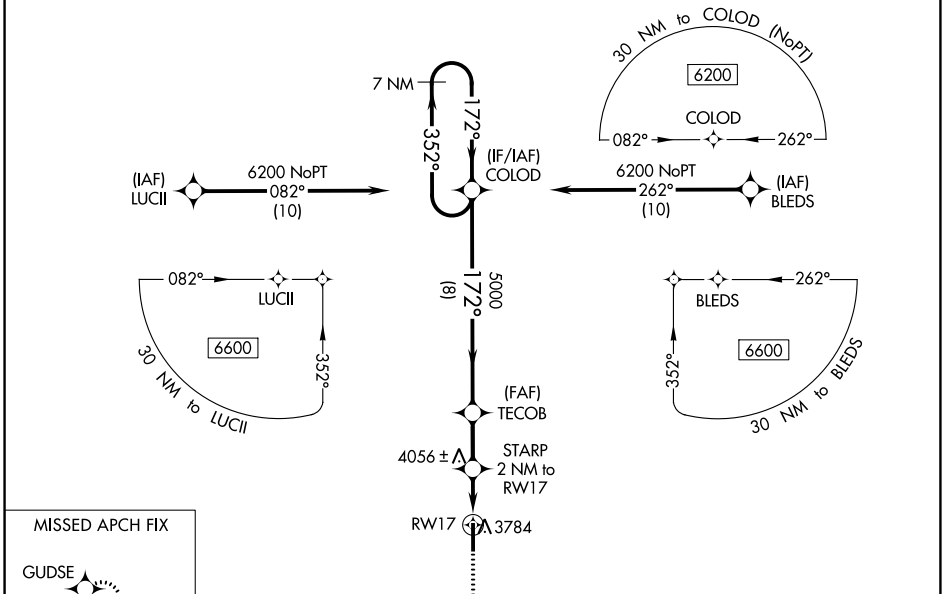
WRAY MUNI (2V5)

RNP APCH - GPS.

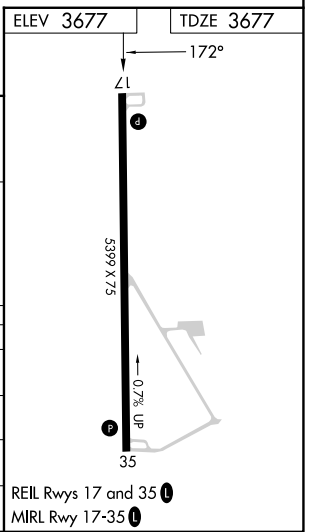
⚠ For uncompensated Baro-VNAV systems, LNAV/VNAV NA below -22°C or above 53°C.
⚠ Baro-VNAV and VDP NA when using Imperial altimeter setting. When local altimeter setting not received, use Imperial altimeter setting and increase LPV DA to 4020 feet, increase LNAV/VNAV DA to 4088 feet and all visibilities 1/8 SM. Increase all MDAs 160 feet and LNAV visibility Cat C/D 1/2 SM, and Circling visibility Cat C 1/2 SM, Cat D 1/4 SM.

MISSED APPROACH: Climb to 6600 direct GUDSE and hold.

AWOS-3 118.25	DENVER CENTER 132.7 226.675	UNICOM 122.8 (CTAF) 0
-------------------------	---------------------------------------	---------------------------------



CATEGORY	A	B	C	D
LPV DA		3877-1	200 (200-1)	
LNAV/VNAV DA		3945-1	268 (300-1)	
LNAV MDA		4040-1	363 (400-1)	
C CIRCLING	4100-1 423 (500-1)	4140-1 463 (500-1)	4540-2 1/2 863 (900-2 1/2)	4540-2 3/4 863 (900-2 3/4)



SW-1, 22 FEB 2024 to 21 MAR 2024

SW-1, 22 FEB 2024 to 21 MAR 2024

WAAS CH 87041 W35A	APP CRS 352°	Rwy Idg TDZE Apt Elev	5399 3653 3677
--	------------------------	-----------------------------	---

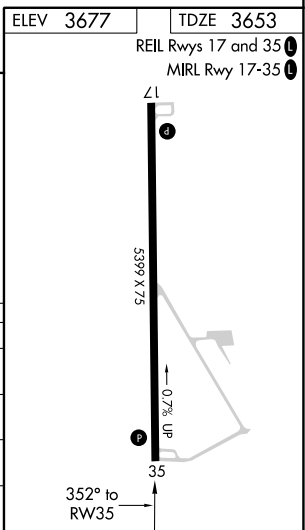
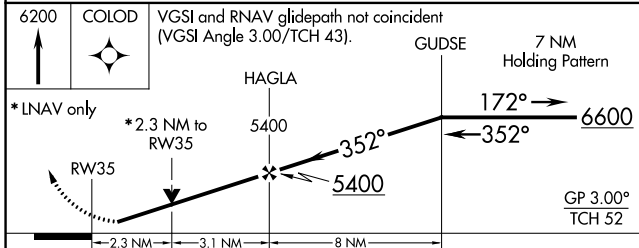
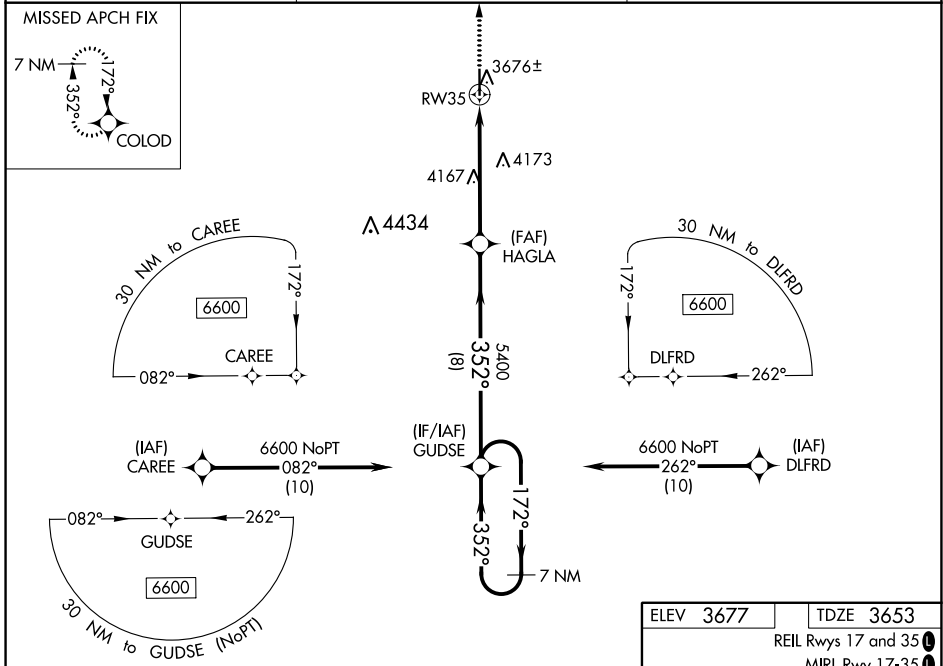
RNAV (GPS) RWY 35

WRAY MUNI (2V5)

⚠ For uncompensated Baro-VNAV systems, LNAV/VNAV NA below -22°C (-7°F) or above 53°C (127°F). Baro-VNAV and VDP NA when using Imperial altimeter setting. Rwy 35 helicopter visibility reduction below 3/4 SM NA. DME/DME RNP-0.3 NA. When local altimeter setting is not received use Imperial altimeter setting: increase LPV DA to 4047 and visibility to 1 1/4 SM and LNAV/VNAV DA to 4088 and visibility to 1 1/4 SM; increase all MDAs 140 feet and visibility Cats A, D 1/2 SM, Cat C 1/2 SM.

MISSED APPROACH: Climb to 6200 direct COLOD and hold.

AWOS-3 118.25	DENVER CENTER 132.7 226.675	UNICOM 122.8 (CTAF) 1
-------------------------	---------------------------------------	---------------------------------



CATEGORY	A	B	C	D
LPV DA	3903-1 250 (300-1)			
LNAV/VNAV DA	3945-1 292 (300-1)			
LNAV MDA	4420-1 767 (800-1)	4420-1 1/4 767 (800-1 1/4)	4420-2 1/2 767 (800-2 1/2)	4540-2 3/4 767 (800-2 3/4)
C CIRCLING	4420-1 743 (800-1)	4420-1 1/4 743 (800-1 1/4)	4540-2 1/2 863 (900-2 1/2)	4540-2 3/4 863 (900-2 3/4)

SW-1, 22 FEB 2024 to 21 MAR 2024

SW-1, 22 FEB 2024 to 21 MAR 2024