

APP CRS	Rwy Idg	4300
103°	TDZE	706
	Apt Elev	706

RNAV (GPS) RWY 11

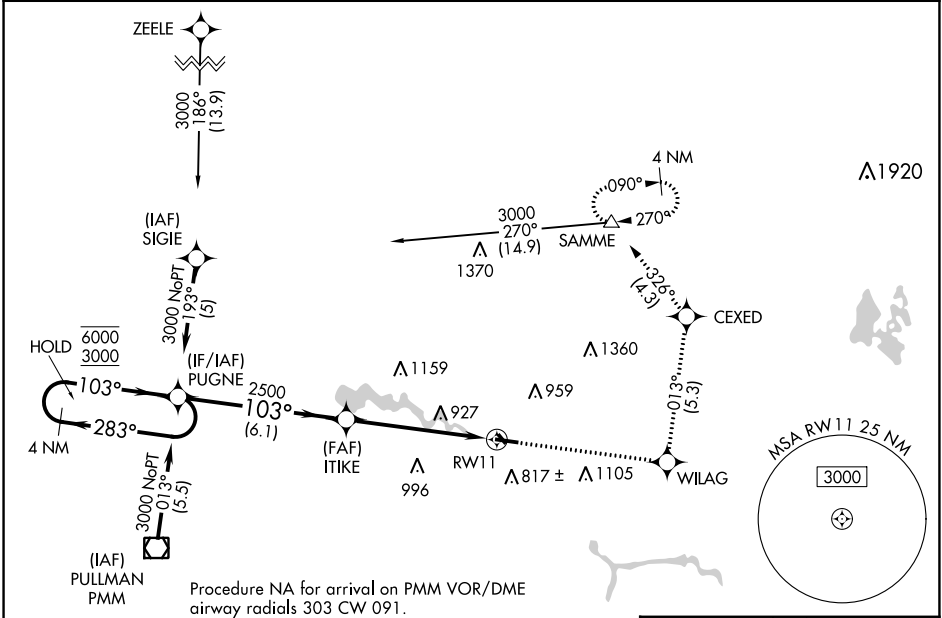
PADGHAM FLD (35D)

RNP APCH - GPS.

NA Circling NA to Rwy 15 and 33. Rwy 11 helicopter visibility reduction below ¼ SM NA. Use Holland altimeter setting, when not received use Grand Rapids altimeter setting and increase all MDAs 40 feet and LNAV Cat C visibility ¼ SM.

MISSED APPROACH: Climb to 3000 direct WILAG and on track 013° to CEXED and track 326° to SAMME and hold, continue climb-in-hold to 3000.

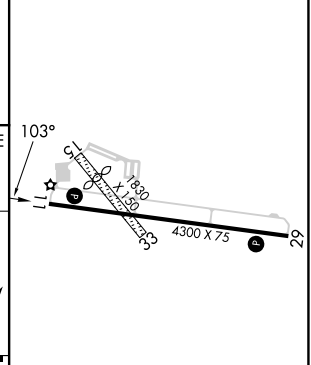
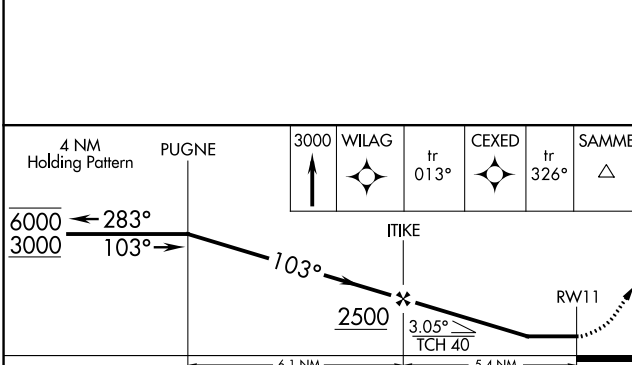
BIV ASOS 119.025	GREAT LAKES APP CON * 128.4 257.6	UNICOM 122.8 (CTAF) 0
----------------------------	---	---------------------------------



EC-1, 22 FEB 2024 to 21 MAR 2024

EC-1, 22 FEB 2024 to 21 MAR 2024

ELEV 706	TDZE 706
----------	----------



CATEGORY	A	B	C	D
LNAV MDA	1220-1	514 (600-1)	1220-1 1/8 514 (600-1 1/8)	NA
C CIRCLING	1280-1 574 (600-1)	1320-1 614 (700-1)	1460-2 1/4 754 (800-2 1/4)	NA

REIL Rwy 11 and 29 **0**
MIRL Rwy 11-29 **0**

APP CRS 283°	Rwy Idg TDZE Apt Elev	4300 705 706
------------------------	-----------------------------	---

RNAV (GPS) RWY 29

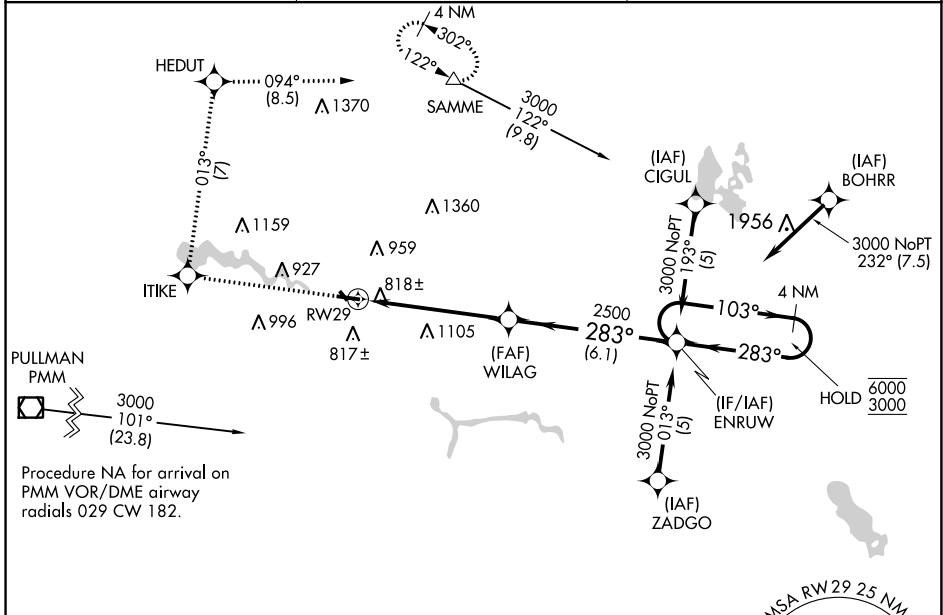
PADGHAM FLD (35D)

RNP APCH - GPS.

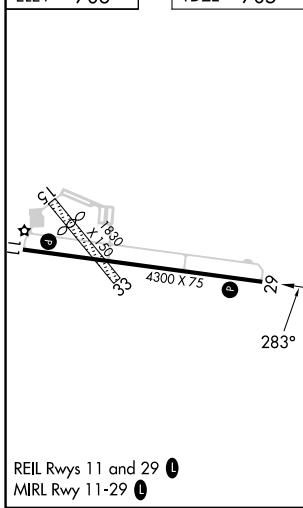
⚠ NA Circling NA to Rwy 15 and 33. Rwy 29 helicopter visibility reduction below $\frac{3}{8}$ SM NA. Use Holland altimeter setting; when not received, use Grand Rapids altimeter setting and increase all MDAs 40 feet and LNAV Cat C visibility $\frac{1}{8}$ SM.

MISSED APPROACH: Climb to 3000 direct ITIKE and on track 013° to HEDUT and track 094° to SAMME and hold.

BIV ASOS 119.025	GREAT LAKES APP CON ★ 128.4 257.6	UNICOM 122.8 (CTAF) 0
----------------------------	---	---------------------------------



ELEV 706	TDZE 705
----------	----------



3000	ITIKE	HEDUT	SAMME	ENRUW	4 NM Holding Pattern
↑	⊙	⊙	△		
	tr 013°	tr 094°			
	WILAG			103°	6000
				← 283°	3000
	RW29				
	5.4 NM		6.1 NM		
CATEGORY	A	B	C	D	
LNAV MDA	1380-1	675 (700-1)	1380-1 $\frac{7}{8}$ 675 (700-1 $\frac{7}{8}$)	NA	
☐ CIRCLING	1380-1	674 (700-1)	1460-2 $\frac{1}{4}$ 754 (800-2 $\frac{1}{4}$)	NA	

ALLEGAN, MICHIGAN
Orig-C 23FEB23

42°32'N-85°49'W

RNAV (GPS) RWY 29

EC-1, 22 FEB 2024 to 21 MAR 2024

EC-1, 22 FEB 2024 to 21 MAR 2024