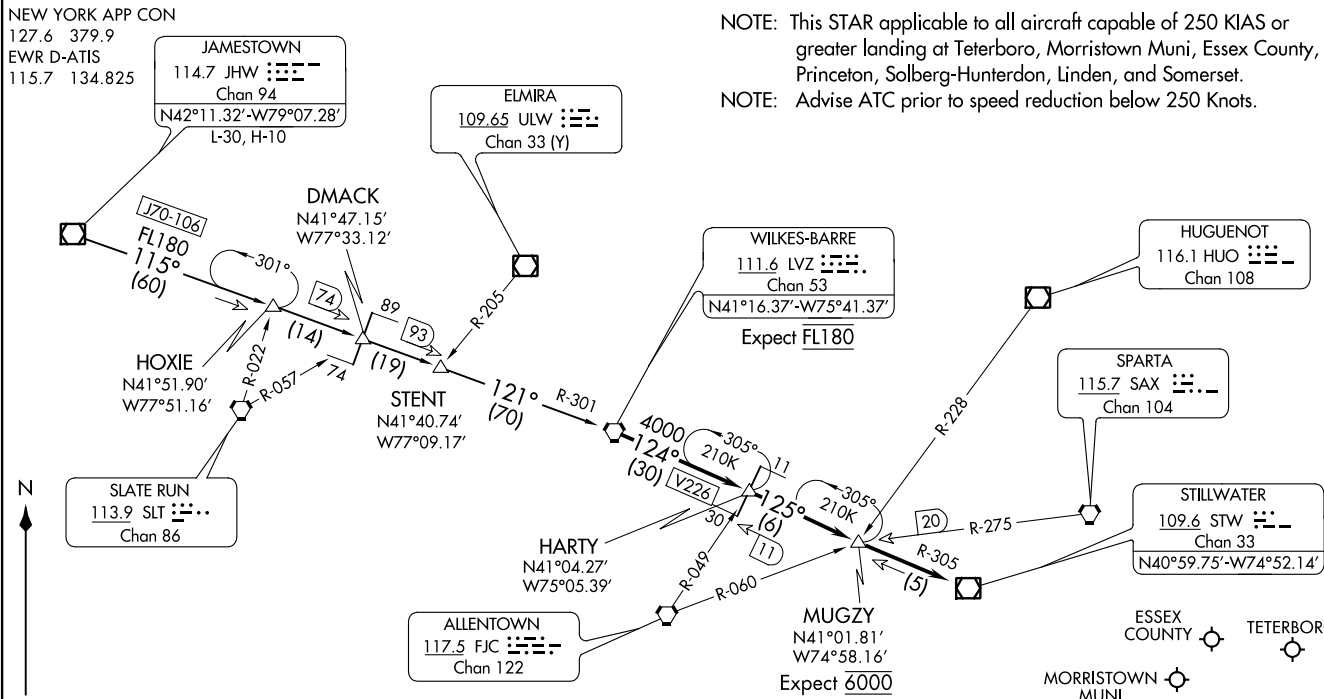


WILKES-BARRE FOUR ARRIVAL
(LVZ.LVZ4) 200CT11

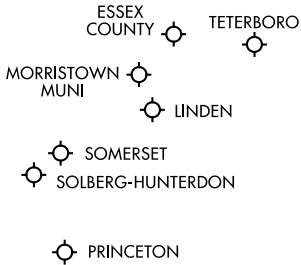
WILKES-BARRE FOUR ARRIVAL
(LVZ.LVZ4) 21188



NOTE: This STAR applicable to all aircraft capable of 250 KIAS or greater landing at Teterboro, Morristown Muni, Essex County, Princeton, Solberg-Hunterdon, Linden, and Somerset.
NOTE: Advise ATC prior to speed reduction below 250 Knots.

ARRIVAL ROUTE DESCRIPTION

JAMESTOWN TRANSITION (JHW.LVZ4): From over JHW VOR/DME on JHW R-115 and LVZ R-301 to LVZ VORTAC. Thence
. . . . from over LVZ VORTAC, on LVZ R-124 and STW R-305 to STW VOR/DME. Expect radar vectors to final approach course.



NOTE: Chart not to scale.

TETERBORO, NEW JERSEY

TETERBORO, NEW JERSEY

AL-890 (FAA)