

# RNAV (GPS) RWY 7

MASON COUNTY (3I2)

APP CRS	Rwy ldg	<b>4000</b>
<b>072°</b>	TDZE	<b>643</b>
	Apt Elev	<b>643</b>

RNP APCH - GPS.

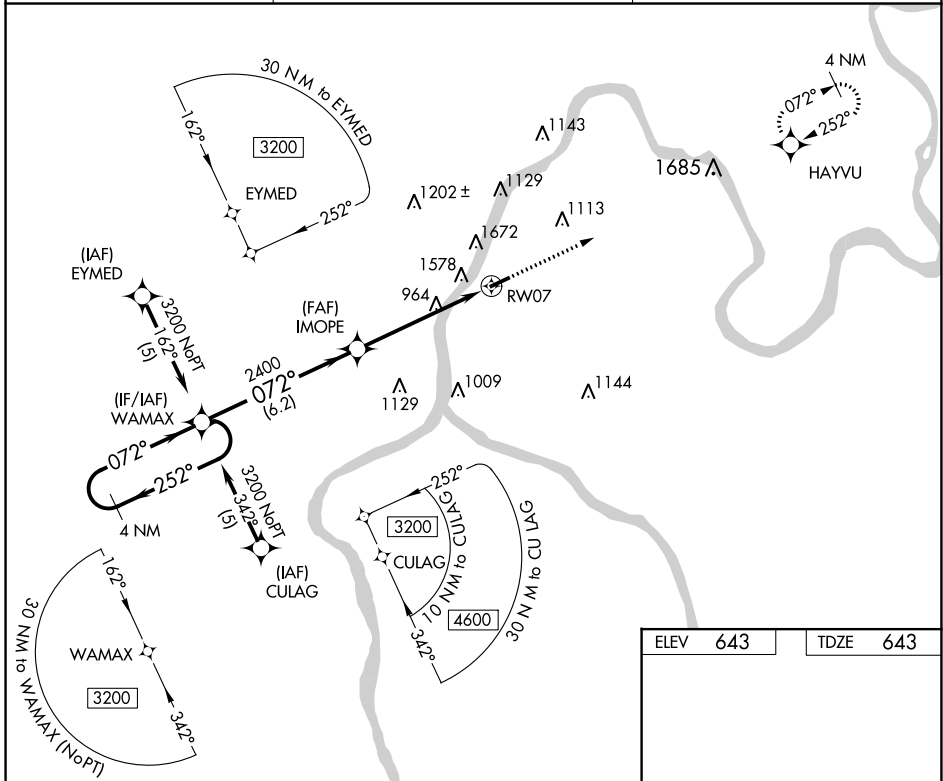
**⚠** Circling NA NW of Rwy 7-25. Rwy 7 helicopter visibility reduction below  $\frac{3}{4}$  SM NA.  
**⚠** When local altimeter setting not received, use Athens/Albany, OH altimeter setting and increase all MDA 80 feet. Straight-in and Circling NA at night to Rwy 7.  
**⚠** -17°C

MISSED APPROACH:  
 Climb to 2700 direct HAYVU and hold.

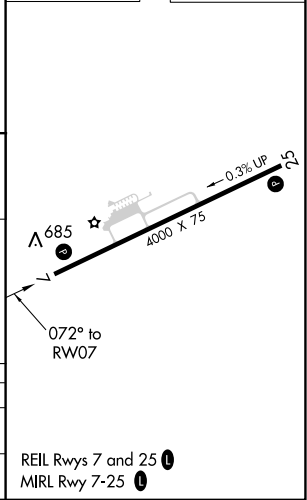
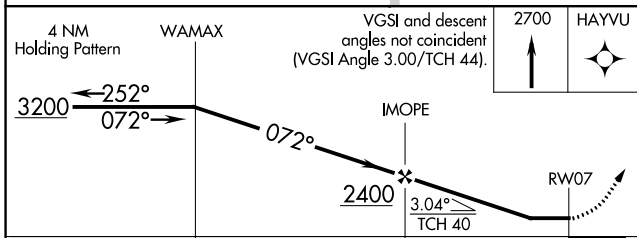
AWOS-3  
**119.675**

HUNTINGTON APP CON  
**128.4 270.1**

UNICOM  
**122.8 (CTAF) 0**



ELEV	<b>643</b>	TDZE	<b>643</b>
------	------------	------	------------



CATEGORY	A	B	C	D
LNVA MDA	1880-1¼ 1237 (1300-1¼)	1880-1½ 1237 (1300-1½)	1880-3	1237 (1300-3)
CIRCLING	1880-1¼ 1237 (1300-1¼)	1880-1½ 1237 (1300-1½)	1880-3	1237 (1300-3)

REIL Rwy 7 and 25 **0**  
 MIRL Rwy 7-25 **0**

NE-4, 22 FEB 2024 to 21 MAR 2024

NE-4, 22 FEB 2024 to 21 MAR 2024