

WAAS CH 42531 W16A	APP CRS 165°	Rwy Idg TDZE Apt Elev	3148 903 909
--	------------------------	-----------------------------	---

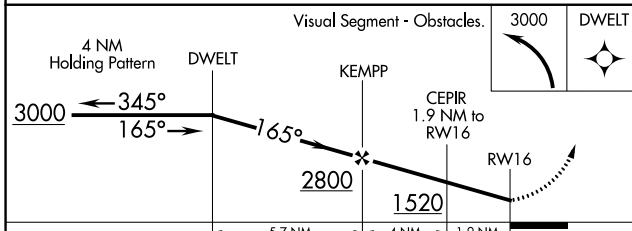
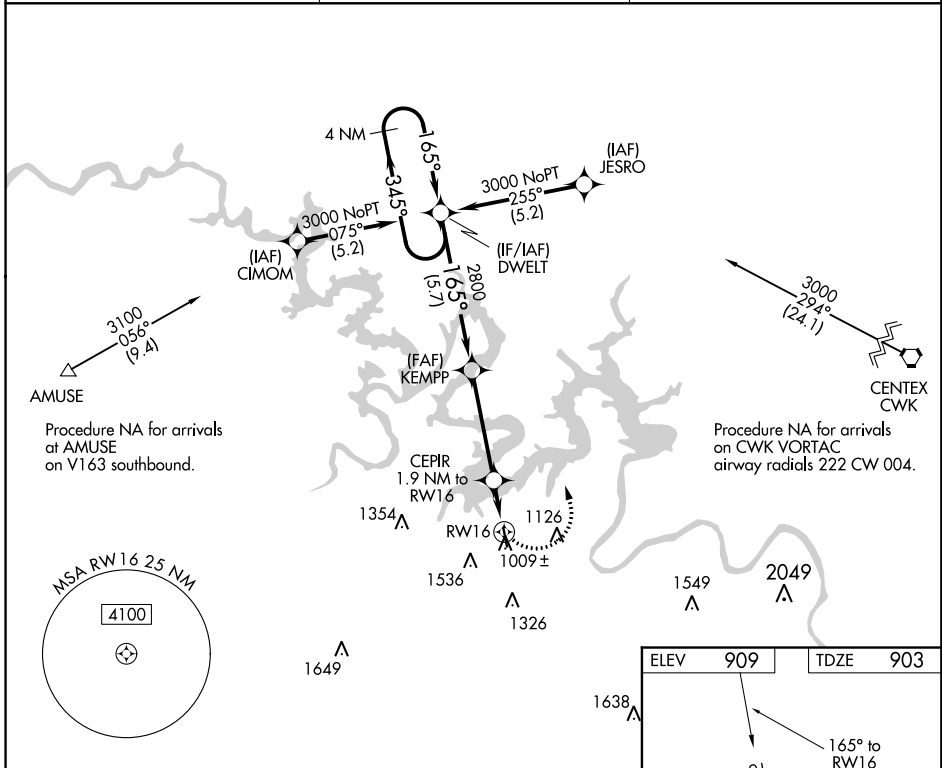
RNAV (GPS) RWY 16

LAKEWAY AIRPARK (3R.9)

▼ Rwy 16, 34 helicopter visibility reduction below 1 SM NA.
▲ DME/DME RNP-0.3 NA. Procedure NA at night.
 Use Lago Vista altimeter setting; when not received, use Austin-Bergstrom
 Intl altimeter setting and increase all MDA 40 feet.

MISSED APPROACH: Climbing left turn to 3000 direct DWELT and hold.

RWY ASOS 119.375	AUSTIN APP CON 119.0 370.85	UNICOM 123.0 (CTAF)
-----------------------------------	--	--------------------------------------



ELEV	909	TDZE	903
------	-----	------	-----

CATEGORY	A	B	C	D
LP MDA	1340-1	437 (500-1)		NA
LNAV MDA	1360-1	457 (500-1)		NA
CIRCLING	1620-1 711 (800-1)	1960-1 ½ 1051 (1100-1½)		NA

SC-3, 07 NOV 2019 to 05 DEC 2019

SC-3, 07 NOV 2019 to 05 DEC 2019

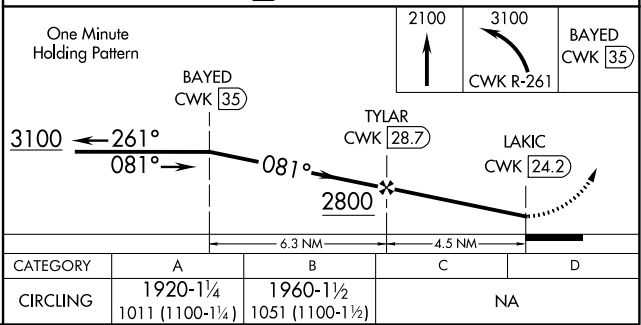
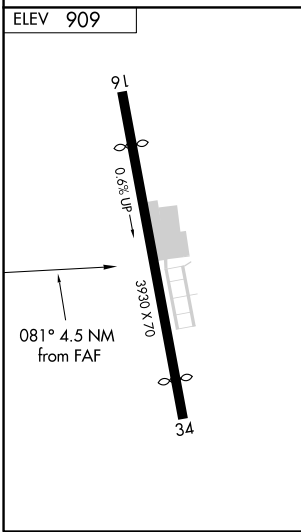
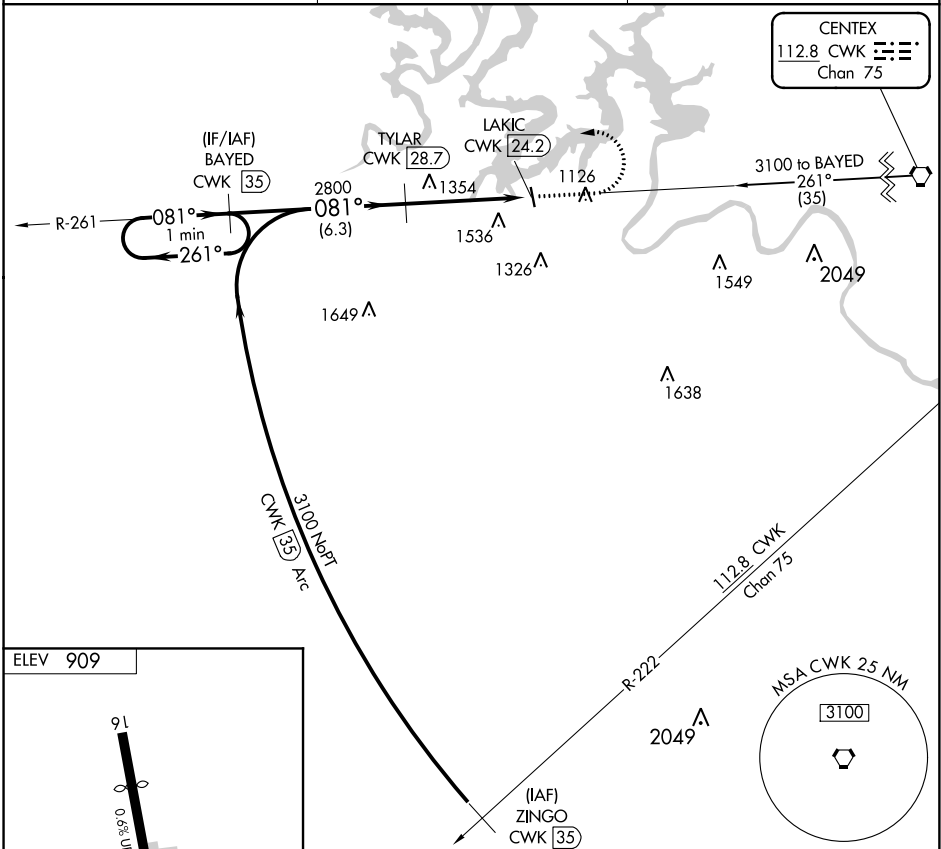
VORTAC CWK 112.8 Chan 75	APP CRS 081°	Rwy Idg TDZE Apt Elev 909	N/A N/A 909
--	------------------------	---	--------------------------

VOR/DME-A
LAKEWAY AIRPARK (3R9)

Procedure NA at night. Visibility reduction by helicopters NA.
NA Use Lago Vista altimeter setting; when not received, use Austin-Bergstrom Intl altimeter setting and increase all MDA 40 feet.

MISSED APPROACH: Climb to 2100 then climbing left turn to 3100 on CWK VORTAC R-261 to BAYED/35 DME and hold.

RYW ASOS 119.375	AUSTIN APP CON 119.0 370.85	UNICOM 123.0 (CTAF)
-----------------------------------	--	--------------------------------------



SC-3, 07 NOV 2019 to 05 DEC 2019

SC-3, 07 NOV 2019 to 05 DEC 2019