

(GABOO.GABOO1) 20198

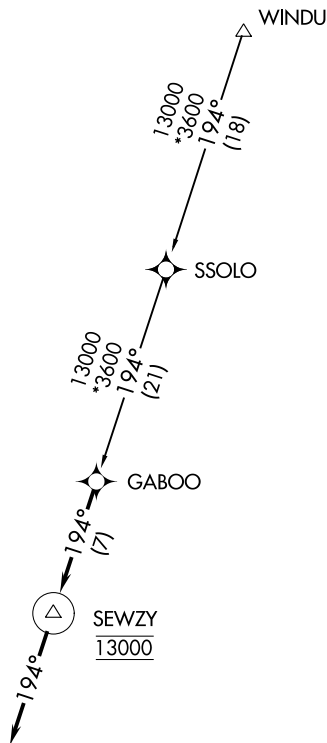
GABOO ONE ARRIVAL (RNAV)

AL-502 (FAA)

AUSTIN, TEXAS

AUSTIN APP CON
127.225 317.65
HYI ATIS ★
120.825
T74 AWOS-3PT
119.75

- NOTE: RADAR required.
- NOTE: RNAV 1.
- NOTE: DME/DME/IRU or GPS required.
- NOTE: Turbojet and turboprop aircraft only.



LAGO VISTA TX-RUSTY ALLEN

LAKEWAY AIRPARK

SAN MARCOS RGNL

TAYLOR MUNI

NOTE: Chart not to scale.

ARRIVAL ROUTE DESCRIPTION

SSOLO TRANSITION (SSOLO.GABOO1)

WINDU TRANSITION (WINDU.GABOO1)

LANDING ALL AIRPORTS: From GABOO on track 194° to cross SEWZY at 13000, then on track 194°. Expect RADAR vectors to final approach course.

GABOO ONE ARRIVAL (RNAV)

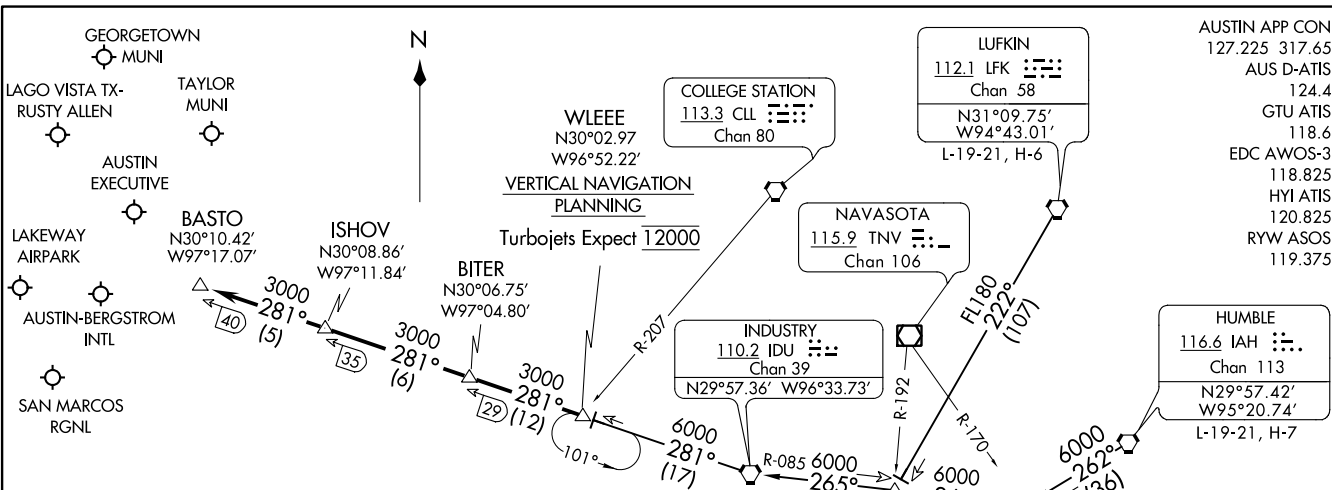
(GABOO.GABOO1) 16JUL20

AUSTIN, TEXAS

SC-3, 31 DEC 2020 to 28 JAN 2021

SC-3, 31 DEC 2020 to 28 JAN 2021

BITER NINE ARRIVAL
(WLEEE.BITER9) 25APR19



AUSTIN APP CON
127.225 317.65
AUS D-ATIS
124.4
GTU ATIS
118.6
EDC AWOS-3
118.825
HYI ATIS
120.825
RYW ASOS
119.375

(WLEEE.BITER9) 20198
BITER NINE ARRIVAL

AL-556 (FAA)

AUSTIN, TEXAS

ARRIVAL ROUTE DESCRIPTION

HUMBLE TRANSITION (IAH.BITER9): From over IAH VORTAC on IAH R-262 to SHYNR INT, then on IDU R-085 to IDU VORTAC, then on IDU R-281 to WLEEE INT. Thence

INDUSTRY TRANSITION (IDU.BITER9): From over IDU VORTAC on IDU R-281 to WLEEE INT. Thence

LUFKIN TRANSITION (LFK.BITER9): From over LFK VORTAC on LFK R-222 to BOCCK INT, then on IDU R-085 to IDU VORTAC, then on IDU R-281 to WLEEE INT. Thence

. . . . From over WLEEE on IDU R-281 to BITER, then on IDU R-281 to ISHOV, then on IDU R-281 to BASTO. Expect vectors to final approach course at or prior to BASTO.

- NOTE: RADAR required.
- NOTE: DME required.
- NOTE: DME/DME/IRU or GPS equipped aircraft must file the WLEEE (RNAV) or POTRR (RNAV) STAR.

NOTE: Chart not to scale.

AUSTIN, TEXAS

BLEWE FOUR ARRIVAL

AUSTIN, TEXAS

AUSTIN APP CON
 127.225 317.65
 AUS D-ATIS
 124.4
 EDC AWOS-3
 118.825
 HYI ATIS
 120.825
 RYW ASOS
 119.375

WACO
 115.3 ACT
 Chan 100
 N31°39.74'-W97°16.14'
 L-19, H-6

MAVERICK
 113.1 TTT
 Chan 78
 L-17, H-6

WINDU
 N31°31.83'
 W97°04.95'
 L-19, H-6-7

GOOCH SPRINGS
 112.5 AGJ
 Chan 72
 L-19, H-6

BLEWE
 N31°12.46'
 W97°12.54'

SEWZY
 N30°48.80'
 W97°21.74'
 VERTICAL NAVIGATION
 PLANNING

LAGO VISTA TX-
 RUSTY ALLEN

Expect 13000

TAYLOR
 MUNI

AUSTIN
 EXECUTIVE

LAKEWAY
 AIRPARK

AUSTIN-BERGSTROM
 INTL

SAN MARCOS MUNI

CENTEX
 112.8 CWK
 Chan 75
 N30°22.71'-W97°31.79'
 L-19-21, H-6

- NOTE: RADAR required.
- NOTE: DME required.
- NOTE: DME/DME/IRU or GPS equipped turbojet and turboprop aircraft must file the SEWZY (RNAV) or MSTLO (RNAV) STAR.

NOTE: Chart not to scale.

ARRIVAL ROUTE DESCRIPTION

WACO TRANSITION (ACT.BLEWE4): From over ACT VORTAC on ACT R-165 to BLEWE INT. Thence . . .

WINDU TRANSITION (WINDU.BLEWE4): From over WINDU INT on CWK R-012 to BLEWE INT. Thence . . .

. . . From over BLEWE on CWK R-012 to SEWZY, then on CWK R-012 to CWK VORTAC. Expect vectors to final approach course at or prior to CWK VORTAC.


SC-3, 31 DEC 2020 to 28 JAN 2021


SC-3, 31 DEC 2020 to 28 JAN 2021

KALLA FOUR ARRIVAL

AUSTIN, TEXAS

AUSTIN APP CON
119.0 370.85
AUS D-ATIS
124.4

GOOCH SPRINGS
112.5 AGJ 
Chan 72

LLANO
108.2 LLO 
Chan 19
N30°47.78'-W98°47.24'
L-19, H-6

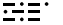
4100
089°
(37)

KALLA
N30°43.26'
W98°04.64'
10000

GEORGETOWN
MUNI 

120°
(35)

LAKEWAY
AIRPARK 

Ldg KAUS, KGTU, K3R9
CENTEX
112.8 CWK 
Chan 75
N30°22.71'-W97°31.79'

10000

AUSTIN-BERGSTROM INTL 

NOTE: RADAR required.
NOTE: DME/DME/IRU or GPS equipped turbojet
and turboprop aircraft landing KAUS must
file the LAIKS (RNAV) STAR.

NOTE: Chart not to scale.

ARRIVAL ROUTE DESCRIPTION

LLANO TRANSITION (LLO.KALLA4): From over LLO VORTAC on LLO R-089
to KALLA. Thence

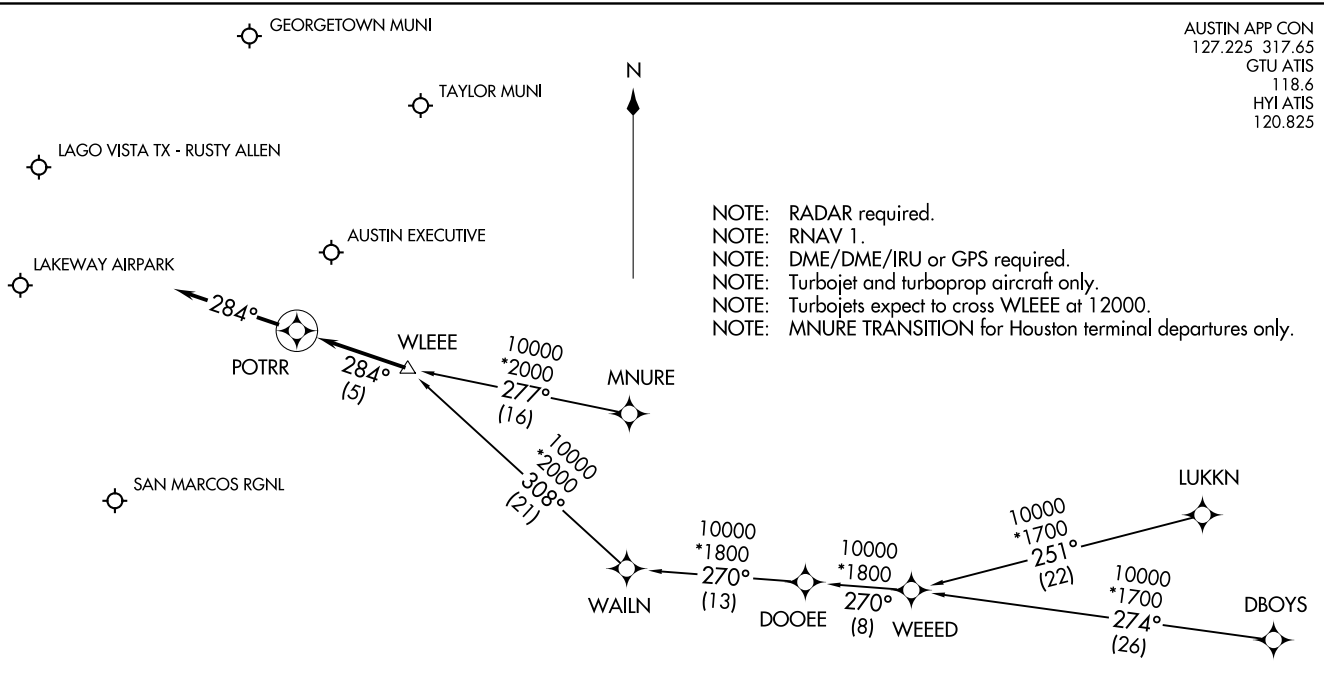
. . . . from over KALLA on CWK R-300 to cross CWK VORTAC at 10000.
Expect vectors to final approach course.

SC-3, 31 DEC 2020 to 28 JAN 2021

SC-3, 31 DEC 2020 to 28 JAN 2021

AUSTIN APP CON
127.225 317.65
GTU ATIS
118.6
HYI ATIS
120.825

- NOTE: RADAR required.
- NOTE: RNAV 1.
- NOTE: DME/DME/IRU or GPS required.
- NOTE: Turbojet and turboprop aircraft only.
- NOTE: Turbojets expect to cross WLEEE at 12000.
- NOTE: MNURE TRANSITION for Houston terminal departures only.



ARRIVAL ROUTE DESCRIPTION

- DBOYS TRANSITION (DBOYS.POTRR1)
- LUKKN TRANSITION (LUKKN.POTRR1)
- MNURE TRANSITION (MNURE.POTRR1)
- WEEED TRANSITION (WEEED.POTRR1)

LANDING ALL AIRPORTS: From WLEEE on track 284° to POTRR, then on track 284°. Expect RADAR vectors to final approach course.

POTRR ONE ARRIVAL (RNAV)
(WLEEE.POTRR1) 07DEC17

(WLEEE.POTRR1) 20198
POTRR ONE ARRIVAL (RNAV)

AL-5891 (FAA)

AUSTIN, TEXAS

AUSTIN, TEXAS