

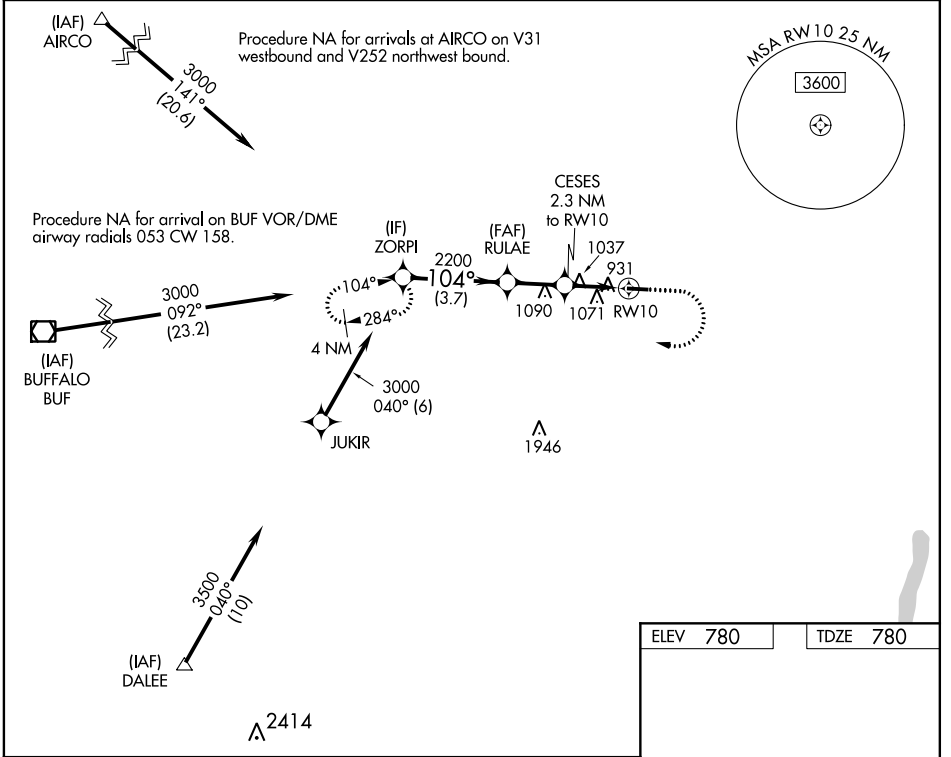
WAAS CH 61030 W10A	APP CRS 104°	Rwy Idg TDZE Apt Elev	3854 780 780
--	------------------------	-----------------------------	---

RNAV (GPS) RWY 10

LE ROY (5G~~0~~)

RNP APCH.	MISSED APPROACH: Climb to 1500 then climbing right turn to 3000 direct ZORPI and hold.
<p>Procedure NA at night. Rwy 10 helicopter visibility reduction below 1 SM NA.</p> <p>NA Use Greater Rochester altimeter setting.</p>	

ROC ASOS 124.825	ROCHESTER APP CON 123.7 322.3	UNICOM 122.8 (CTAF) 0
----------------------------	---	---------------------------------



ELEV 780	TDZE 780
----------	----------

		1500	3000	ZORPI
ZORPI				
3000		104°	RULAE	CESES 2.3 NM to RW10
2200		3.00° TCH 31	1540	RW10
3.7 NM		2.1 NM	2.3 NM	
CATEGORY	A	B	C	D
LP MDA	1360-1	580 (600-1)	NA	
LNAV MDA	1400-1	620 (700-1)	NA	
		MIRL Rwy 10-28 0		
		REIL Rwy 10 and 28 0		

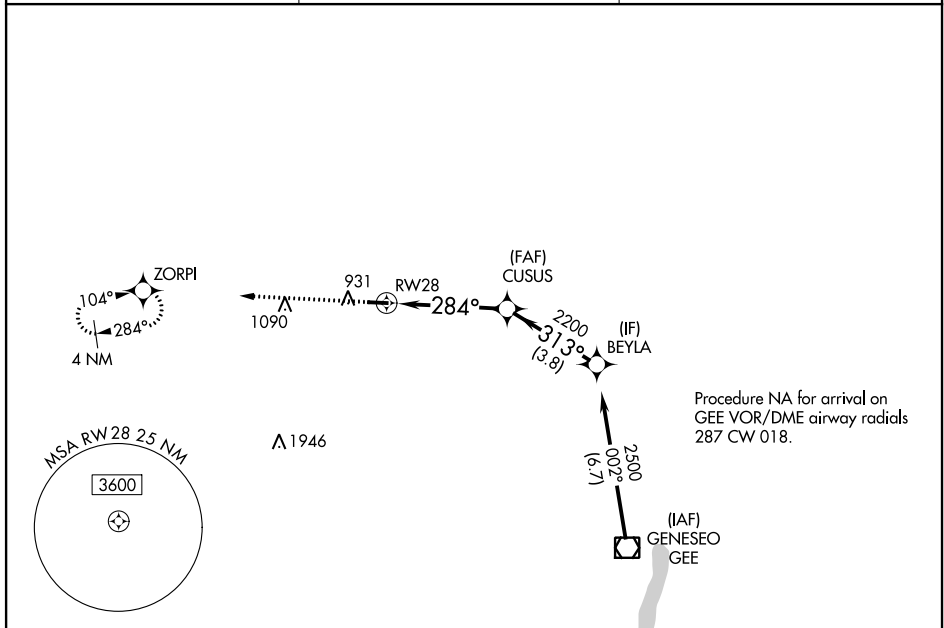
WAAS CH 69330 W28A	APP CRS 284°	Rwy Idg TDZE Apt Elev	3854 778 780
--	------------------------	-----------------------------	---

RNAV (GPS) RWY 28

LE ROY (5G~~0~~)

RNP APCH.	Procedure NA at night. Rwy 28 helicopter visibility reduction below 1 SM NA. Use Greater Rochester altimeter setting.	MISSED APPROACH: Climb to 3000 direct ZORPI and hold.
Procedure NA at night. Rwy 28 helicopter visibility reduction below 1 SM NA. Use Greater Rochester altimeter setting.		

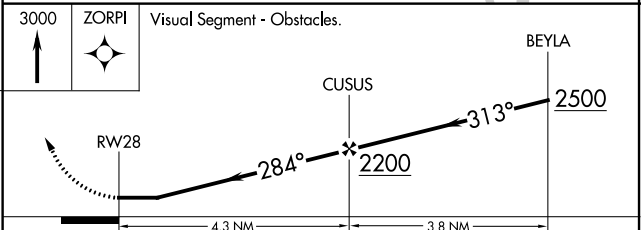
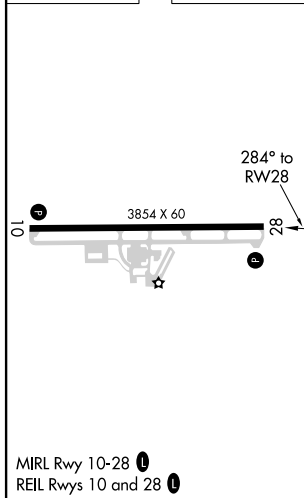
ROC ASOS 124.825	ROCHESTER APP CON 123.7 322.3	UNICOM 122.8 (CTAF) 1
----------------------------	---	--



NE-2, 22 APR 2021 to 20 MAY 2021

NE-2, 22 APR 2021 to 20 MAY 2021

ELEV 780	TDZE 778
-----------------	-----------------



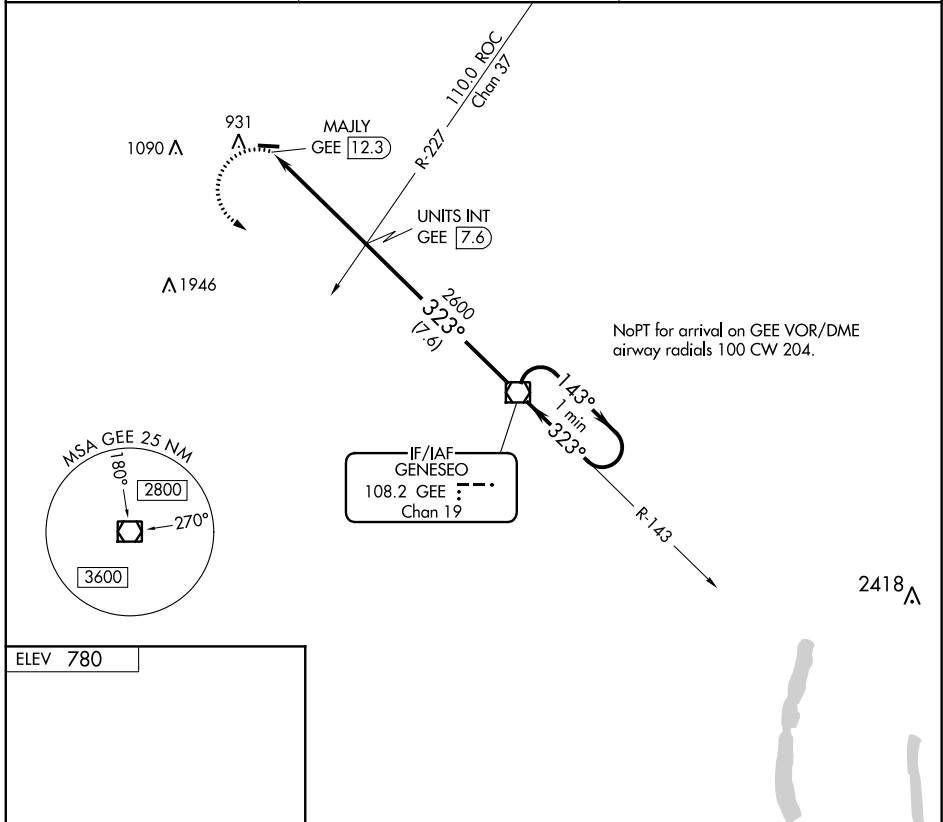
CATEGORY	A	B	C	D
LP MDA	1 240-1	462 (500-1)	NA	
LNAV MDA	1 240-1	462 (500-1)	NA	

VOR/DME GEE 108.2 Chan 19	APP CRS 323°	Rwy Idg TDZE Apt Elev	N/A N/A 780
---	------------------------	-----------------------------	--

VOR-A
LE ROY (5G \emptyset)

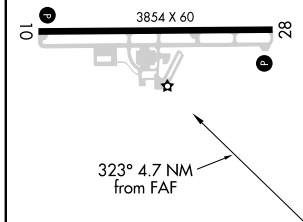
<p>⚠ NA Use Greater Rochester altimeter setting. Circling Rwy 10 NA at night. When Circling to Rwy 28 at night, operational VGSI required, remain on or above VGSI glidepath until threshold.</p>	<p>MISSED APPROACH: Climbing left turn to 4000 direct GEE VOR/DME and hold.</p>
--	--

ROC ASOS 124.825	ROCHESTER APP CON 123.7 322.3	UNICOM 122.8 (CTAF) ①
----------------------------	---	--

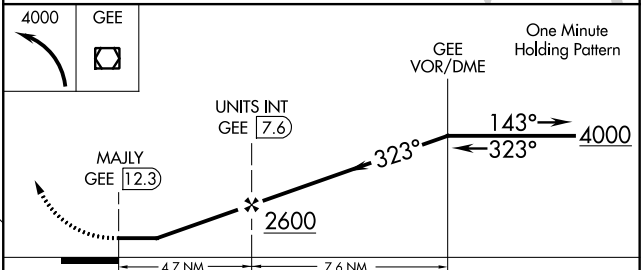


NE-2, 22 APR 2021 to 20 MAY 2021

NE-2, 22 APR 2021 to 20 MAY 2021



MIRL Rwy 10-28 ①					
REIL Rwys 10 and 28 ①					
FAF to MAP 4.7 NM					
Knots	60	90	120	150	180
Min:Sec	4:42	3:08	2:21	1:53	1:34



CATEGORY	A	B	C	D
CIRCLING	1440-1	660 (700-1)	NA	