

APP CRS	Rwy Idg	<b>4802</b>
<b>086°</b>	TDZE	<b>605</b>
	Apt Elev	<b>606</b>

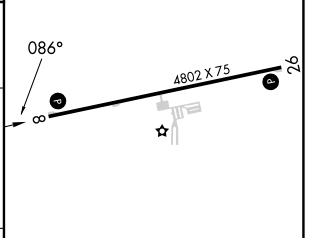
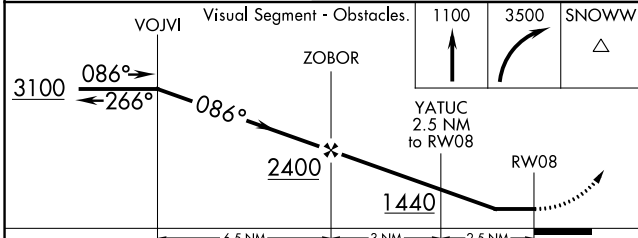
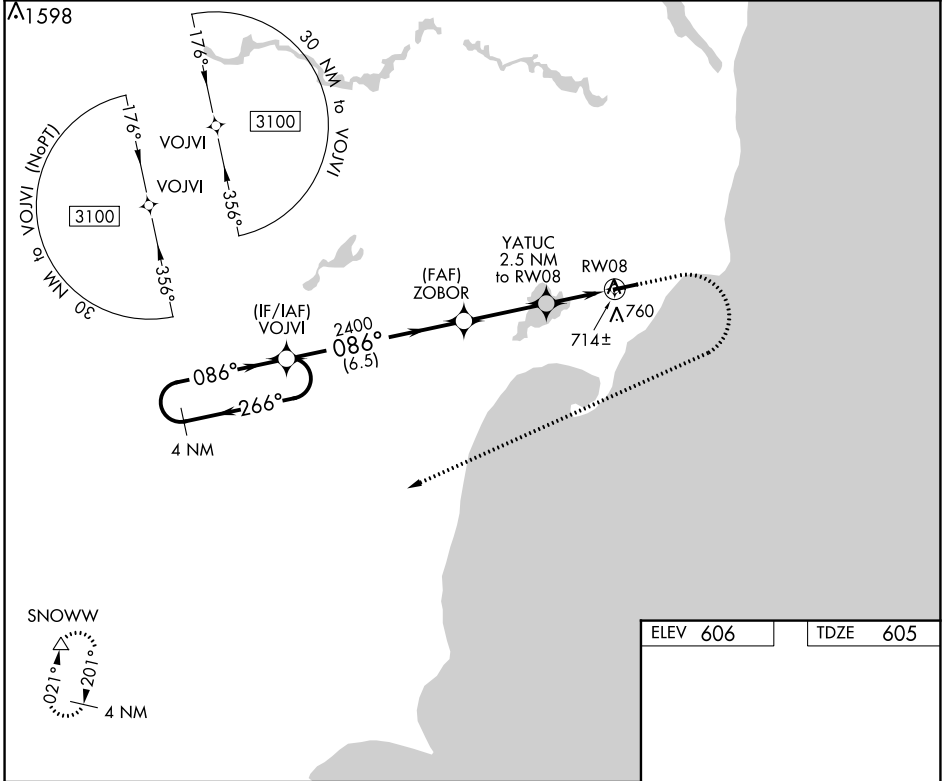
# RNAV (GPS) RWY 8

IOSCO COUNTY (6D9)

**▼** DME/DME RNP-0.3 NA. Procedure NA at night. Helicopter visibility reduction below 1 SM NA. Use Oscoda altimeter setting: when not received, use Bad Axe altimeter setting and increase all MDA 100 feet; increase LNAV Cats C and D visibilities ¼ mile, increase Circling visibility Cat C ¼ mile.

**▲** NA MISSED APPROACH: Climb to 1100 then climbing right turn to 3500 direct SNOWW and hold.

OSC AWOS-3 <b>118.7</b>	MINNEAPOLIS CENTER <b>125.475 269.45</b>	UNICOM <b>122.8 (CTAF)</b>	<b>122.85</b> <b>0</b>
----------------------------	---	-------------------------------	------------------------



CATEGORY	A	B	C	D
LNAV MDA	1000 - 1	395 (400-1)	1000 - 1 1/8	395 (400-1 1/8)
<b>C</b> CIRCLING	1120 - 1	514 (600-1)	1120 - 1 1/2	1160 - 2 554 (600-2)

REIL Rwys 8 and 26 **0**  
MIRL Rwy 8-26 **0**

EC-1, 07 SEP 2023 to 05 OCT 2023

EC-1, 07 SEP 2023 to 05 OCT 2023