

WAAS CH 82526 W18A	APP CRS 178°	Rwy Idg TDZE Apt Elev	4335 452 452
--	------------------------	-----------------------------	---

RNAV (GPS) RWY 18

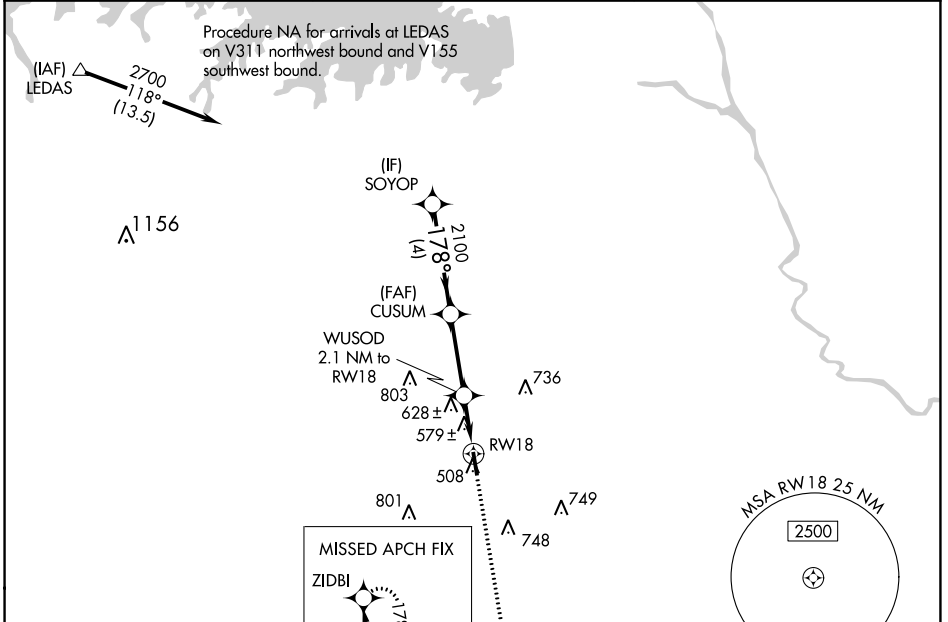
LEXINGTON COUNTY (6J0)

RNP APCH.

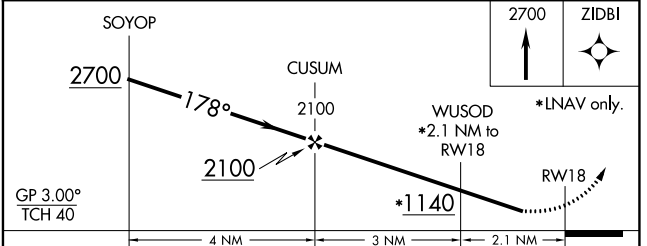
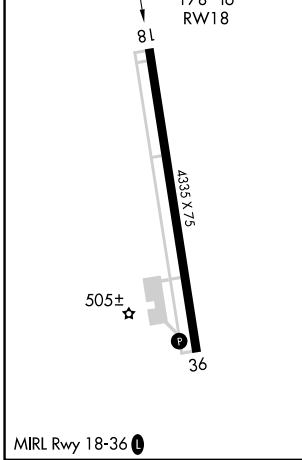
Baro-VNAV NA. Rwy 18 helicopter visibility reduction below 3/4 SM NA. Use Columbia Metro altimeter setting; when not received use Jim Hamilton L B Owens altimeter setting and increase all DA 19 feet, all MDA 20 feet and increase LPV and LNAV/VNAV all Cats visibility 1/8 mile.

MISSED APPROACH: Climb to 2700 direct ZIDBI and hold.

CAE ASOS 120.15	COLUMBIA APP CON 124.15 338.2	UNICOM 123.0 (CTAF)
---------------------------	---	-------------------------------



ELEV 452	TDZE 452
----------	----------



CATEGORY	A	B	C	D
LPV DA	757-1	305 (400-1)		NA
LNAV/VNAV DA	797-1 1/8	345 (400-1 1/8)		NA
LNAV MDA	940-1	488 (500-1)		NA
CIRCLING	980-1 528 (600-1)	1060-1 608 (700-1)		NA

SE-2, 22 FEB 2024 to 21 MAR 2024

SE-2, 22 FEB 2024 to 21 MAR 2024

WAAS CH 40326 W36A	APP CRS 358°	Rwy Idg 4335 TDZE 452 Apt Elev 452
--	------------------------	---

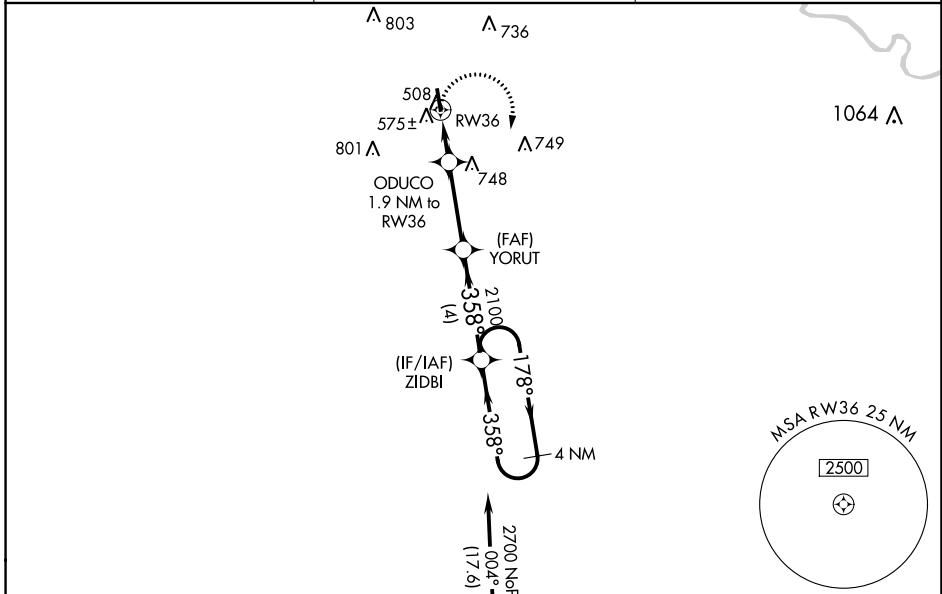
RNAV (GPS) RWY 36

LEXINGTON COUNTY (6J0)

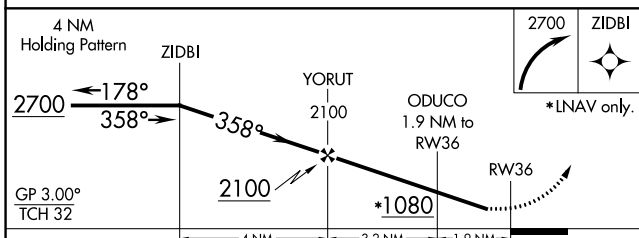
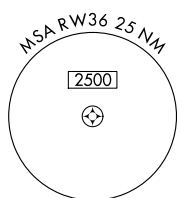
RNP APCH. Baro-VNAV NA. Rwy 36 helicopter visibility reduction below 3/4 SM NA. Use Columbia Metro altimeter setting; when not received use Jim Hamilton L B Owens altimeter setting and increase all DA 19 feet, all MDA 20 feet and increase LPV and LNAV/VNAV all Cats visibility 1/2 mile.

MISSED APPROACH: Climbing right turn to 2700 direct ZIDBI and hold.

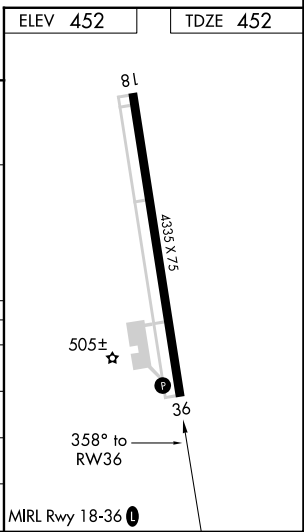
CAE ASOS 120.15	COLUMBIA APP CON 124.15 338.2	UNICOM 123.0 (CTAF) 0
---------------------------	---	---------------------------------



Procedure NA for arrivals at NORMS on V18 southeast bound and V37 southbound.



CATEGORY	A	B	C	D
LPV DA	757-1	305 (400-1)		NA
LNAV/VNAV DA	793-1 1/8	341 (400-1 1/8)		NA
LNAV MDA	880-1	428 (500-1)		NA
CIRCLING	980-1 528 (600-1)	1060-1 608 (700-1)		NA



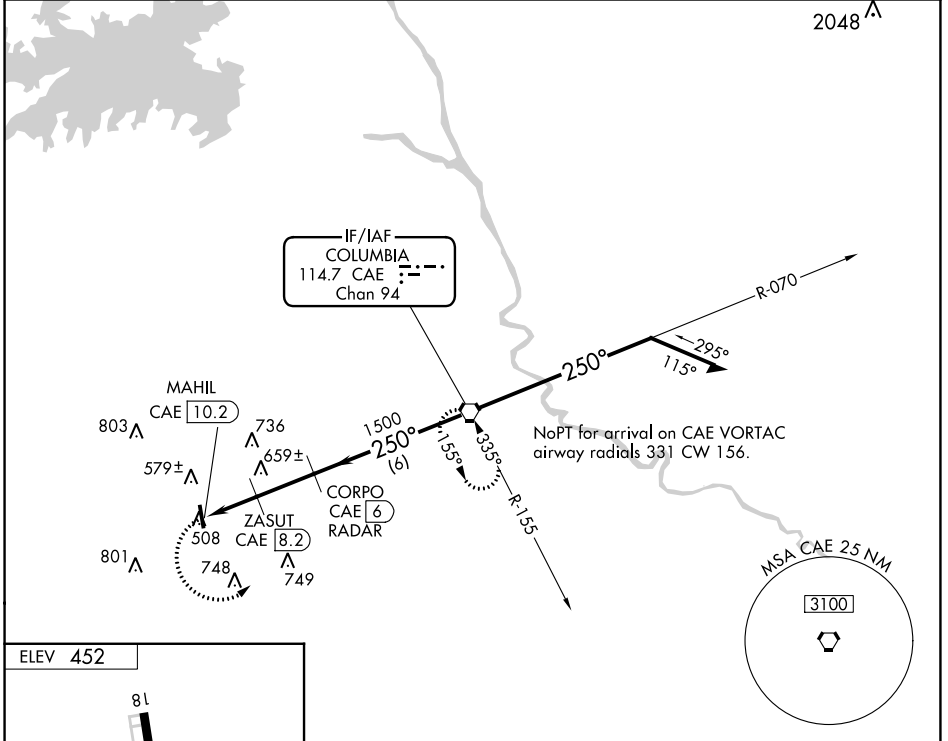
SE-2, 22 FEB 2024 to 21 MAR 2024

SE-2, 22 FEB 2024 to 21 MAR 2024

VORTAC CAE 114.7 Chan 94	APP CRS 250°	Rwy Idg TDZE Apt Elev	N/A N/A 452
--	------------------------	-----------------------------	--

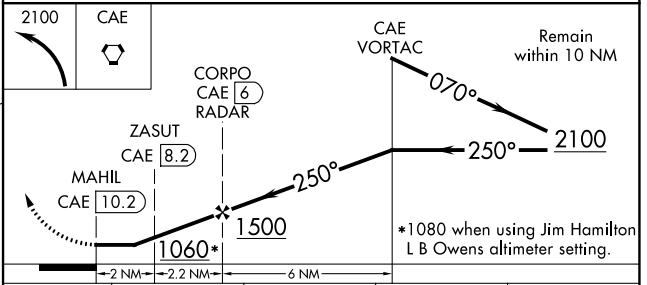
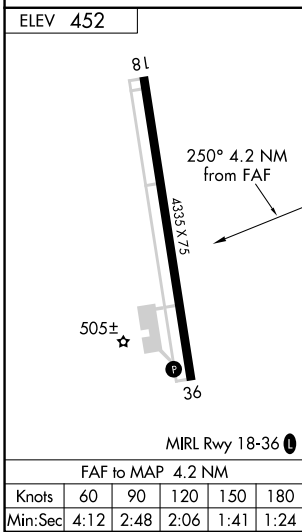
VOR-A
LEXINGTON COUNTY (6J0)

DME or RADAR required.		MISSED APPROACH: Climbing left turn to 2100 direct CAE VORTAC and hold.
Use Columbia Metro altimeter setting; when not received, use Jim Hamilton L B Owens altimeter setting and increase all MDA 20 feet.		
CAE ASOS 120.15	COLUMBIA APP CON 124.15 338.2	UNICOM 123.0 (CTAF)



SE-2, 22 FEB 2024 to 21 MAR 2024

SE-2, 22 FEB 2024 to 21 MAR 2024



CATEGORY	A	B	C	D
CIRCLING	1060-1	608 (700-1)	NA	
ZASUT FIX MINIMUMS				
CIRCLING	980-1 528 (600-1)	1060-1 608 (700-1)	NA	