

RADAR and DME required.

TOP ALTITUDE:
ASSIGNED BY ATC



TAKEOFF MINIMUMS
Rwys 16, 34: Standard.

AWOS-3
119.325
CTAF
123.0
HOUSTON DEP CON
119.7 281.4

FORT STOCKTON
116.9 FST :
Chan 116
N30°57.13'
W102°58.54'
L-19, H-6

SAN ANTONIO
116.8 SAT :
Chan 115
N29°38.64'-W98°27.68'
L-19, H-7

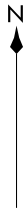
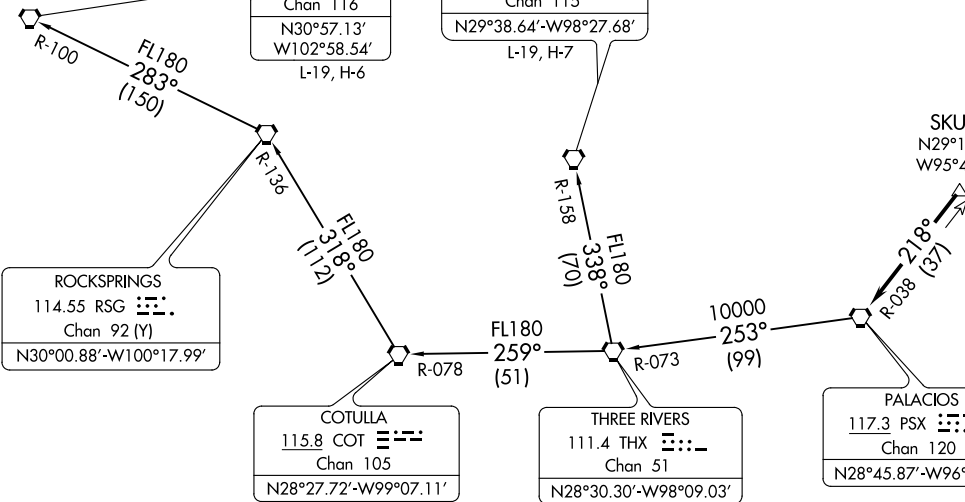
SKUBA
N29°11.72'
W95°47.47'

ROCKSPRINGS
114.55 RSG :
Chan 92 (Y)
N30°00.88'-W100°17.99'

COTULLA
115.8 COT :
Chan 105
N28°27.72'-W99°07.11'

THREE RIVERS
111.4 THX :
Chan 51
N28°30.30'-W98°09.03'

PALACIOS
117.3 PSX :
Chan 120
N28°45.87'-W96°18.37'



(NARRATIVE ON FOLLOWING PAGE)

NOTE: Chart not to scale.

PALACIOS THREE DEPARTURE
(PSX3, PSX) 03NOV22

CLEVELAND, TEXAS
CLEVELAND MUNI (6R3)

(PSX3, PSX) 22307
PALACIOS THREE DEPARTURE

AL-6073 (FAA)

CLEVELAND MUNI (6R3)
CLEVELAND, TEXAS

PALACIOS THREE DEPARTURE



DEPARTURE ROUTE DESCRIPTION

TAKEOFF RUNWAY 16: Climb on heading 157° to 1400 before turning. When entering controlled airspace, climb on assigned heading for RADAR vectors to SKUBA. Maintain ATC assigned altitude. Expect filed altitude 10 minutes after departure, thence. . . .

TAKEOFF RUNWAY 34: Climb on heading 312° to 2000 before turning. When entering controlled airspace, climb on assigned heading for RADAR vectors to SKUBA. Maintain ATC assigned altitude. Expect filed altitude 10 minutes after departure, thence. . . .

. . . .on PSX R-038 to PSX VORTAC.

FORT STOCKTON TRANSITION (PSX3.FST): From over PSX VORTAC on PSX R-253 and THX R-073 to THX VORTAC, then on THX R-259 and COT R-078 to COT VORTAC, then on COT R-318 and RSG R-136 to RSG VORTAC, then on RSG R-283 and FST R-100 to FST VORTAC.

SAN ANTONIO TRANSITION (PSX3.SAT): From over PSX VORTAC on PSX R-253 and THX R-073 to THX VORTAC, then on SAT R-158 to SAT VORTAC.

SC-5, 22 FEB 2024 to 21 MAR 2024

SC-5, 22 FEB 2024 to 21 MAR 2024