

(BLTWY7.BLTWY) 21280

AL-6073 (FAA)

CLEVELAND MUNI (6R3)  
CLEVELAND, TEXAS

# BLTWY SEVEN DEPARTURE (RNAV)

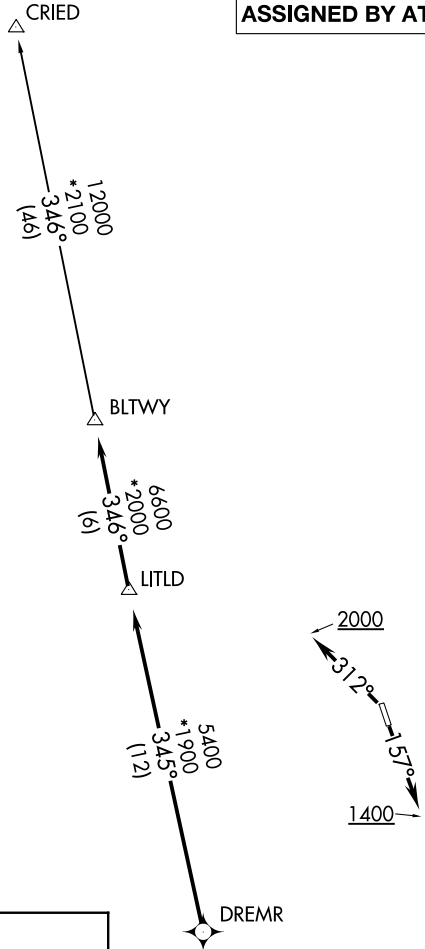
AWOS-3  
119.325  
CTAF  
123.0  
HOUSTON DEP CON  
119.7 281.4

**TOP ALTITUDE:  
ASSIGNED BY ATC**

NOTE: RADAR required.  
NOTE: DME/DME/IRU or GPS required.  
NOTE: RNAV 1.

### TAKEOFF MINIMUMS

Rwy 16, 34: Standard with minimum climb  
of 500' per NM to 660.



SC-5, 22 FEB 2024 to 21 MAR 2024

SC-5, 22 FEB 2024 to 21 MAR 2024



### DEPARTURE ROUTE DESCRIPTION

TAKEOFF RUNWAY 16: Climb on heading 157° to 1400 for RADAR vectors to DREMR, thence . . . .

TAKEOFF RUNWAY 34: Climb on heading 312° to 2000 for RADAR vectors to DREMR, thence . . . .

...on track 345° to LITLD, then on track 346° to BLTWY, then on (transition). Maintain ATC assigned altitude. Expect filed altitude 10 minutes after departure.

CRIED TRANSITION (BLTWY7.CRIED)

NOTE: Chart not to scale.

# BLTWY SEVEN DEPARTURE (RNAV)

(BLTWY7.BLTWY) 07OCT21

CLEVELAND, TEXAS  
CLEVELAND MUNI (6R3)

RNAV 1 - DME/DME/IRU or GPS.

RADAR required.

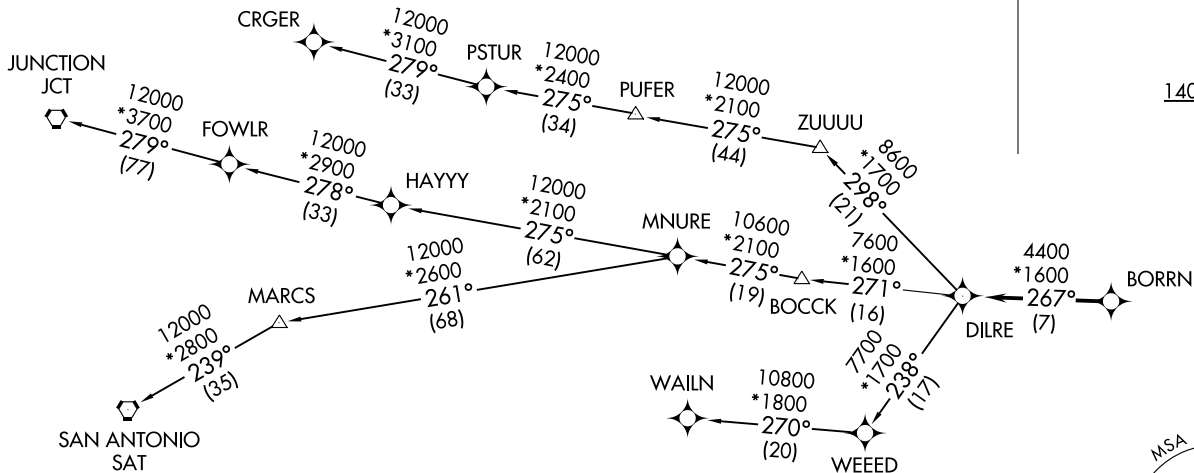
**TOP ALTITUDE:  
ASSIGNED BY ATC**

**TAKEOFF MINIMUMS**

Rwy 16: Standard with minimum climb of 500'/NM to 660.

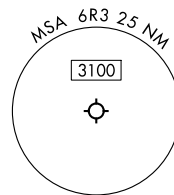
Rwy 34: Standard with minimum climb of 500'/NM to 1000.

AWOS-3  
119.325  
CTAF  
123.0  
HOUSTON DEP CON  
119.7 281.4



NOTE: CRGER-TRANSITION ATC assigned only for aircraft departing 54T, AXH, EFD, GLS, HPY, IWS, LBX, LVJ, SGR, TME, TØØ, T41.

(NARRATIVE ON FOLLOWING PAGE)



NOTE: Chart not to scale.

BORRN SIX DEPARTURE (RNAV)  
(BORRN6.BORRN) 30NOV23

CLEVELAND, TEXAS  
CLEVELAND MUNI (6R3)

(BORRN6.BORRN) 23334  
BORRN SIX DEPARTURE (RNAV)

AL-6073 (FAA)

CLEVELAND MUNI (6R3)  
CLEVELAND, TEXAS

# BORRN SIX DEPARTURE (RNAV)



## DEPARTURE ROUTE DESCRIPTION

TAKEOFF RUNWAY 16: Climb on heading 157° to 1400, for RADAR vectors to BORRN, thence. . . .

TAKEOFF RUNWAY 34: Climb on heading 337° to 2000, for RADAR vectors to BORRN, thence. . . .

. . . .on track 267° to DILRE, then on (transition). Maintain ATC assigned altitude. Expect filed altitude 10 minutes after departure.

CRGER TRANSITION (BORRN6.CRGER)

JUNCTION TRANSITION (BORRN6.JCT)

MNURE TRANSITION (BORRN6.MNURE)

SAN ANTONIO TRANSITION (BORRN6.SAT)

WAILN TRANSITION (BORRN6.WAILN)

SC-5, 22 FEB 2024 to 21 MAR 2024

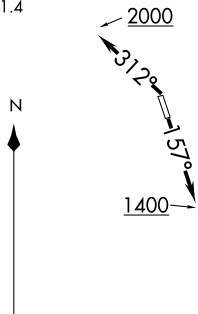
SC-5, 22 FEB 2024 to 21 MAR 2024

HOODO SEVEN DEPARTURE (RNAV)  
(HOODO7.HOODO) 07OCT21

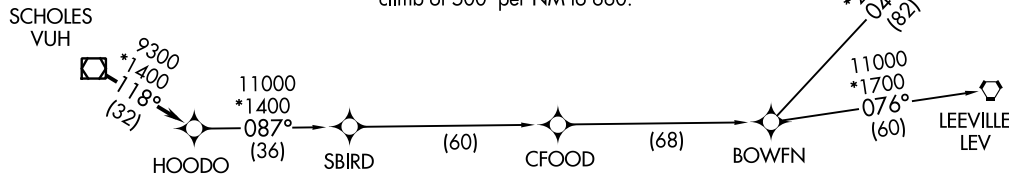
AWOS-3  
119.325  
CTAF  
123.0  
HOUSTON DEP CON  
119.7 281.4

**TOP ALTITUDE:  
ASSIGNED BY ATC**

- NOTE: RNAV 1.
- NOTE: RADAR required.
- NOTE: ATC assigned only.
- NOTE: DME/DME/IRU or GPS required.
- NOTE: For non-GPS equipped aircraft, LCH, LLA, TBD, and LEV DME's must be operational.



TAKEOFF MINIMUMS  
Rwys 16, 34: Standard with minimum climb of 500' per NM to 660.



NOTE: Chart not to scale.

**DEPARTURE ROUTE DESCRIPTION**

TAKEOFF RUNWAY 16: Climb on heading 157° to 1400, for RADAR vectors to VUH VOR/DME, thence . . . .

TAKEOFF RUNWAY 34: Climb on heading 312° to 2000, for RADAR vectors to VUH VOR/DME, thence . . . .

. . . . on track 118° to HOODO, then on (transition). Maintain ATC assigned altitude.

Expect filed altitude 10 minutes after departure.

BOWFN TRANSITION (HOODO7.BOWFN)

CFOOD TRANSITION (HOODO7.CFOOD)

HARVEY TRANSITION (HOODO7.HRV)

LEEVILLE TRANSITION (HOODO7.LEV)

SBIRD TRANSITION (HOODO7.SBIRD)

CLEVELAND, TEXAS  
CLEVELAND MUNI (6R33)

(HOODO7.HOODO) 21280  
HOODO SEVEN DEPARTURE (RNAV)  
AL-6073 (FAA)

CLEVELAND MUNI (6R33)  
CLEVELAND, TEXAS

(INDIE8.INDIE) 21280

AL-6073 (FAA)

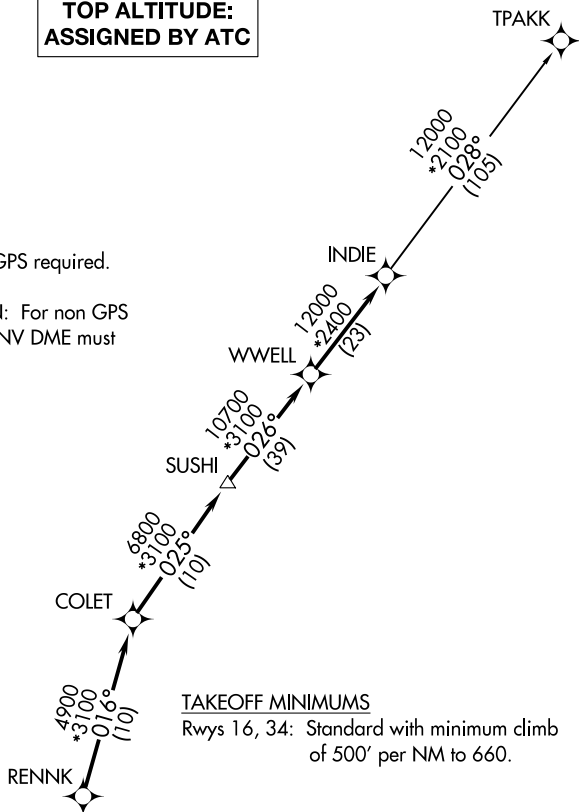
CLEVELAND MUNI (6R3)  
CLEVELAND, TEXAS

# INDIE EIGHT DEPARTURE (RNAV)

AWOS-3  
119.325  
CTAF  
123.0  
HOUSTON DEP CON  
119.7 281.4

**TOP ALTITUDE:  
ASSIGNED BY ATC**

- NOTE: RADAR required.
- NOTE: DME/DME/IRU or GPS required.
- NOTE: RNAV 1.
- NOTE: TPAKK TRANSITION: For non GPS equipped aircraft TNV DME must be operational.



### TAKEOFF MINIMUMS

Rwys 16, 34: Standard with minimum climb of 500' per NM to 660.

### DEPARTURE ROUTE DESCRIPTION

TAKEOFF RUNWAY 16: Climb on heading 157° to 1400 for RADAR vectors to RENNK, thence . . .

TAKEOFF RUNWAY 34: Climb on heading 312° to 2000 for RADAR vectors to RENNK, thence . . .

. . . on track 016° to COLET, then on track 025° to SUSHI, then on track 026° to WWELL, then on track 026° to INDIE, then on (transition). Maintain ATC assigned altitude. Expect filed altitude 10 minutes after departure.

TPAKK TRANSITION (INDIE8.TPAKK)



NOTE: Chart not to scale.

# INDIE EIGHT DEPARTURE (RNAV)

(INDIE8.INDIE) 07OCT21

CLEVELAND, TEXAS  
CLEVELAND MUNI (6R3)

SC-5, 22 FEB 2024 to 21 MAR 2024

SC-5, 22 FEB 2024 to 21 MAR 2024

AWOS-3  
119.325  
CTAF  
123.0  
HOUSTON DEP CON  
119.7 281.4

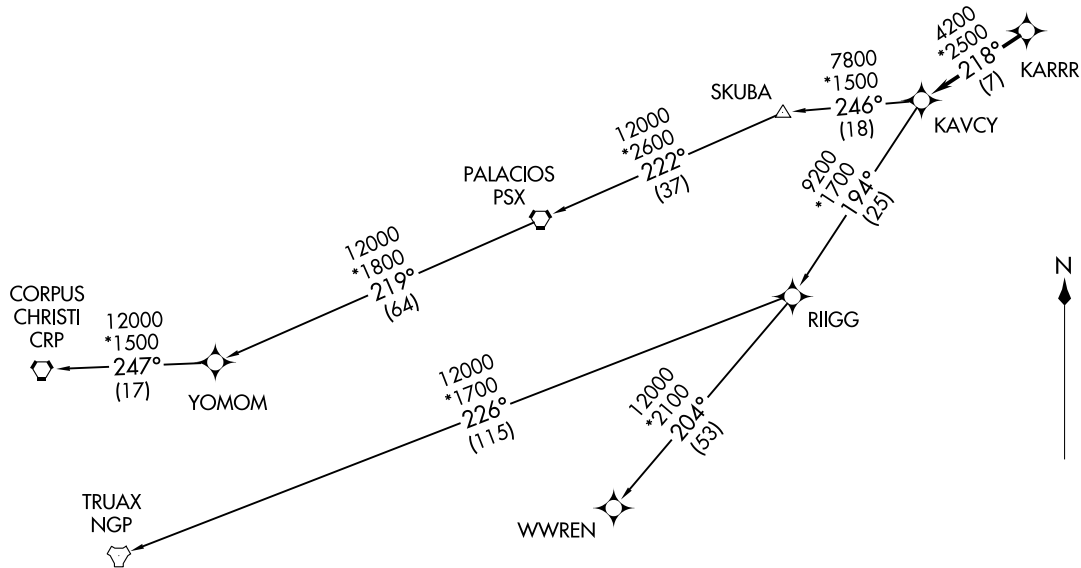
RNAV-1 DME/DME/IRU or GPS.

RADAR required.

**TOP ALTITUDE:  
ASSIGNED BY ATC**

TAKEOFF MINIMUMS

Rwy 16: Standard with minimum climb of 500' per NM to 660.  
Rwy 34: Standard with minimum climb of 500' per NM to 1000.



(NARRATIVE ON FOLLOWING PAGE)

NOTE: Chart not to scale.

KARRR SEVEN DEPARTURE (RNAV)  
(KARRR7 .KARRR) 29DEC22

CLEVELAND, TEXAS  
CLEVELAND MUNI (6R3)

(KARRR7 .KARRR) 22363  
KARRR SEVEN DEPARTURE (RNAV)

AL-6073 (FAA)

CLEVELAND MUNI (6R3)  
CLEVELAND, TEXAS

# KARRR SEVEN DEPARTURE (RNAV)



## DEPARTURE ROUTE DESCRIPTION

TAKEOFF RUNWAY 16: Climb on heading 157° to 1400, for RADAR vectors to KARRR, thence. . . .

TAKEOFF RUNWAY 34: Climb on heading 337° to 2000, for RADAR vectors to KARRR, thence. . . .

. . . .on track 218° to KAVCY, then on (transition). Maintain ATC assigned altitude. Expect filed altitude 10 minutes after departure.

CORPUS CHRISTI TRANSITION (KARRR7.CRP)

PALACIOS TRANSITION (KARRR7.PSX)

TRUAX TRANSITION (KARRR7.NGP)

WWREN TRANSITION (KARRR7.WWREN)

YOMOM TRANSITION (KARRR7.YOMOM)

SC-5, 22 FEB 2024 to 21 MAR 2024

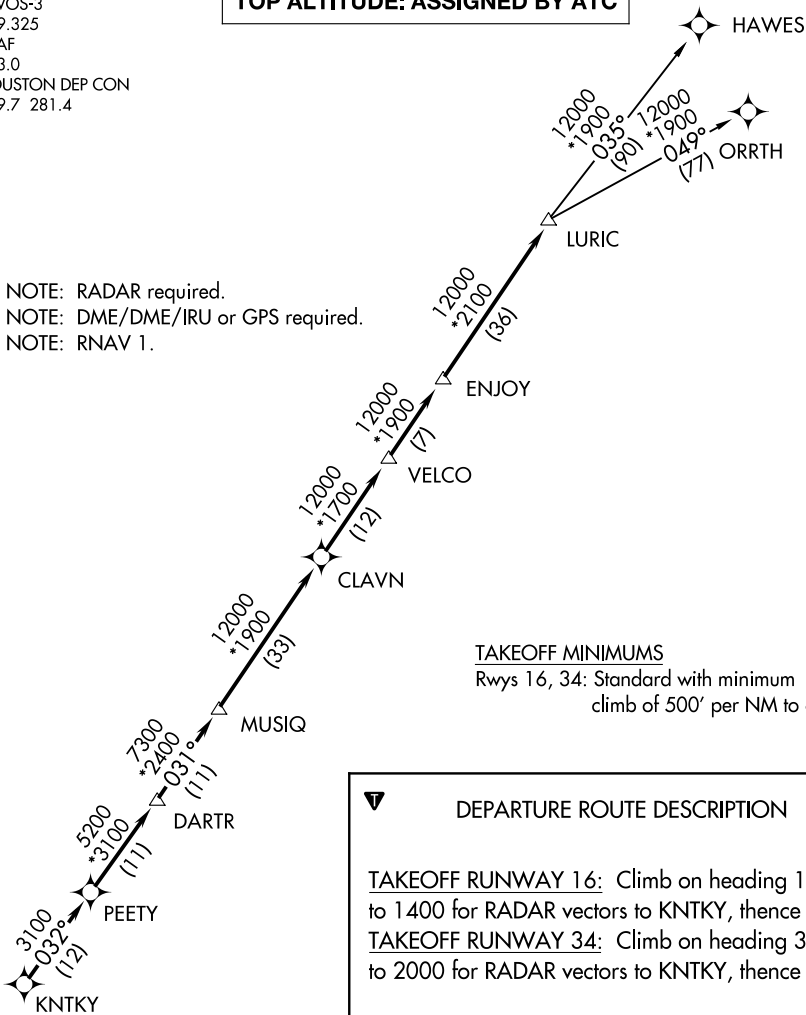
SC-5, 22 FEB 2024 to 21 MAR 2024

# LURIC EIGHT DEPARTURE (RNAV)

AWOS-3  
119.325  
CTAF  
123.0  
HOUSTON DEP CON  
119.7 281.4

**TOP ALTITUDE: ASSIGNED BY ATC**

NOTE: RADAR required.  
NOTE: DME/DME/IRU or GPS required.  
NOTE: RNAV 1.



### TAKEOFF MINIMUMS

Rwys 16, 34: Standard with minimum climb of 500' per NM to 660.

### DEPARTURE ROUTE DESCRIPTION

**TAKEOFF RUNWAY 16:** Climb on heading 157° to 1400 for RADAR vectors to KNTKY, thence . . .

**TAKEOFF RUNWAY 34:** Climb on heading 312° to 2000 for RADAR vectors to KNTKY, thence . . .

. . . on track 032° to PEETY, then on track 032° to DARTR, then on track 031° to MUSIQ, then on track 031° to CLAVN, then on track 031° to VELCO, then on track 031° to ENJOY, then on track 031° to LURIC, then on (transition). Maintain ATC assigned altitude. Expect filed altitude 10 minutes after departure.

HAWES TRANSITION (LURIC8.HAWES)

ORRTH TRANSITION (LURIC8.ORRTH)

NOTE: Chart not to scale.





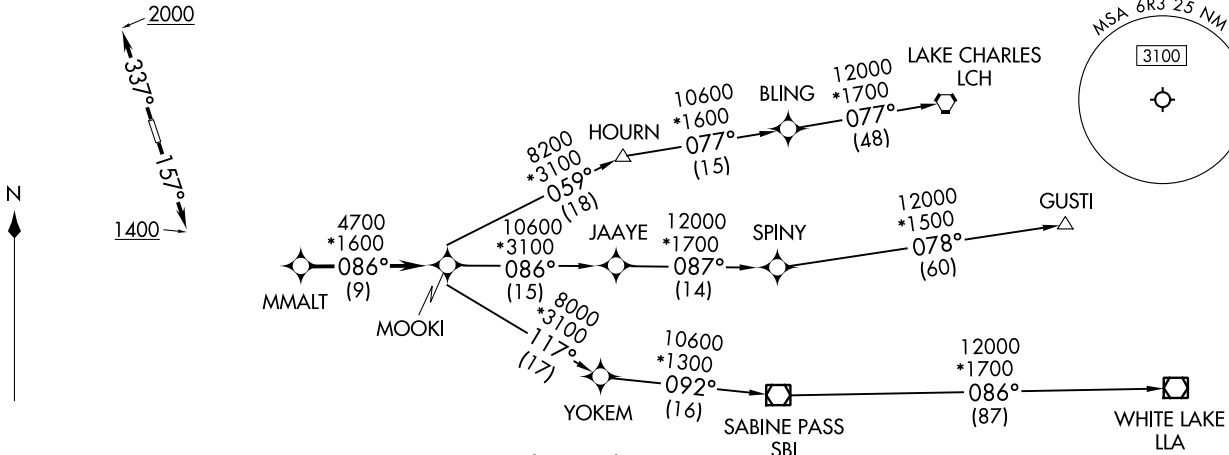
MMALT SEVEN DEPARTURE (RNAV)  
 (MMALT7.MMALT) 30NOV23

CLEVELAND MUNI (6R3)  
 CLEVELAND, TEXAS

HOUSTON DEP CON  
 119.7 281.4  
 AWOS-3  
 119.325  
 CTAF  
 123.0

RNAV 1 - DME/DME/IRU or GPS.  
 RADAR required.

TOP ALTITUDE:  
 ASSIGNED BY ATC



NOTE: GUSTI and LCH Transitions ATC assigned only for aircraft departing AXH, EFD, GLS, HPY, IWS, LBX, LVJ, SGR, TME, TØØ, T41 and 54T.

**TAKEOFF MINIMUMS**

Rwy 16: Standard with minimum climb of 500'/NM to 660.  
 Rwy 34: Standard with minimum climb of 500'/NM to 1000.

NOTE: Chart not to scale.



**DEPARTURE ROUTE DESCRIPTION**

TAKEOFF RUNWAY 16: Climb on heading 157° to 1400, for RADAR vectors to MMALT, thence. . . .  
TAKEOFF RUNWAY 34: Climb on heading 337° to 2000, for RADAR vectors to MMALT, thence. . . .  
 . . . on track 086° to MOOKI, then on (transition). Maintain ATC assigned altitude.  
 Expect filed altitude 10 minutes after departure.

GUSTI TRANSITION (MMALT7.GUSTI)  
LAKE CHARLES TRANSITION (MMALT7.LCH)  
WHITE LAKE TRANSITION (MMALT7.LLA)

(MMALT7.MMALT) 23334  
 MMALT SEVEN DEPARTURE (RNAV)

AL-6073 (FAA)

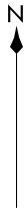
CLEVELAND MUNI (6R3)  
 CLEVELAND, TEXAS

RADAR and DME required.

TOP ALTITUDE:  
ASSIGNED BY ATC



TAKEOFF MINIMUMS  
Rwys 16, 34: Standard.



AWOS-3  
119.325  
CTAF  
123.0  
HOUSTON DEP CON  
119.7 281.4

FORT STOCKTON  
116.9 FST :  
Chan 116  
N30°57.13'  
W102°58.54'  
L-19, H-6

SAN ANTONIO  
116.8 SAT :  
Chan 115  
N29°38.64'-W98°27.68'  
L-19, H-7

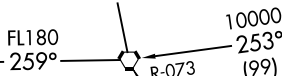
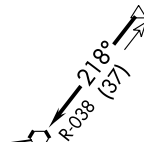
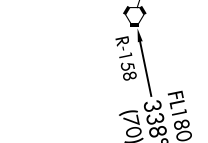
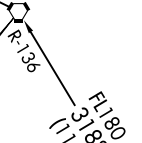
SKUBA  
N29°11.72'  
W95°47.47'

ROCKSPRINGS  
114.55 RSG :  
Chan 92 (Y)  
N30°00.88'-W100°17.99'

COTULLA  
115.8 COT :  
Chan 105  
N28°27.72'-W99°07.11'

THREE RIVERS  
111.4 THX :  
Chan 51  
N28°30.30'-W98°09.03'

PALACIOS  
117.3 PSX :  
Chan 120  
N28°45.87'-W96°18.37'



PALACIOS THREE DEPARTURE  
(PSX3, PSX) 03NOV22

CLEVELAND, TEXAS  
CLEVELAND MUNI (6R3)

(PSX3, PSX) 22307  
PALACIOS THREE DEPARTURE

AL-6073 (FAA)

CLEVELAND MUNI (6R3)  
CLEVELAND, TEXAS

(NARRATIVE ON FOLLOWING PAGE)

NOTE: Chart not to scale.

# PALACIOS THREE DEPARTURE



## DEPARTURE ROUTE DESCRIPTION

TAKEOFF RUNWAY 16: Climb on heading 157° to 1400 before turning. When entering controlled airspace, climb on assigned heading for RADAR vectors to SKUBA. Maintain ATC assigned altitude. Expect filed altitude 10 minutes after departure, thence. . . .

TAKEOFF RUNWAY 34: Climb on heading 312° to 2000 before turning. When entering controlled airspace, climb on assigned heading for RADAR vectors to SKUBA. Maintain ATC assigned altitude. Expect filed altitude 10 minutes after departure, thence. . . .

. . . .on PSX R-038 to PSX VORTAC.

FORT STOCKTON TRANSITION (PSX3.FST): From over PSX VORTAC on PSX R-253 and THX R-073 to THX VORTAC, then on THX R-259 and COT R-078 to COT VORTAC, then on COT R-318 and RSG R-136 to RSG VORTAC, then on RSG R-283 and FST R-100 to FST VORTAC.

SAN ANTONIO TRANSITION (PSX3.SAT): From over PSX VORTAC on PSX R-253 and THX R-073 to THX VORTAC, then on SAT R-158 to SAT VORTAC.

SC-5, 22 FEB 2024 to 21 MAR 2024

SC-5, 22 FEB 2024 to 21 MAR 2024

# STRYA EIGHT DEPARTURE (RNAV)

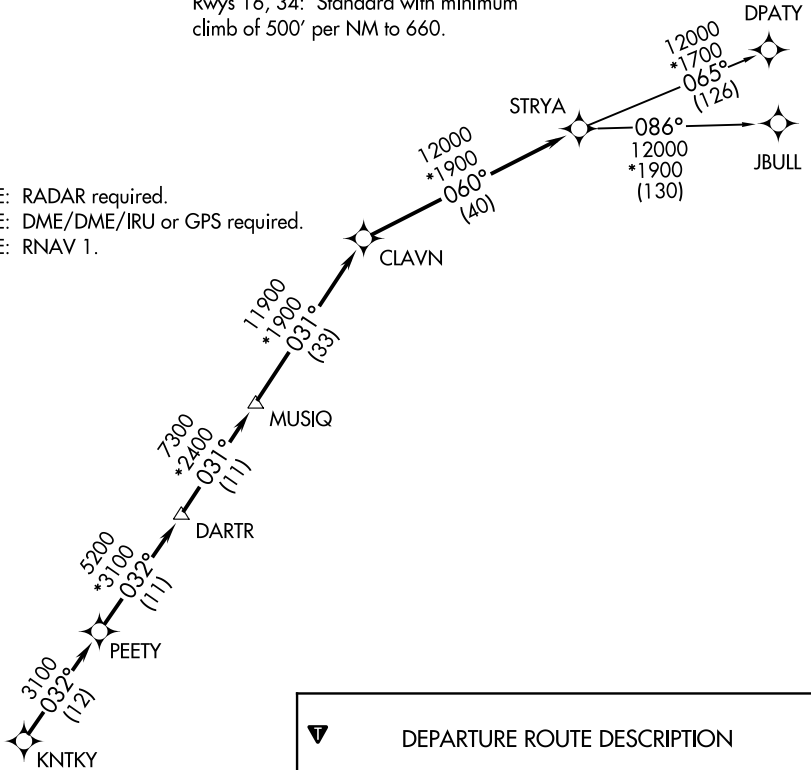
**TOP ALTITUDE: ASSIGNED BY ATC**

AWOS-3  
119.325  
CTAF  
123.0  
HOUSTON DEP CON  
119.7 281.4

### TAKEOFF MINIMUMS

Rwys 16, 34: Standard with minimum climb of 500' per NM to 660.

NOTE: RADAR required.  
NOTE: DME/DME/IRU or GPS required.  
NOTE: RNAV 1.



**DEPARTURE ROUTE DESCRIPTION**

**TAKEOFF RUNWAY 16:** Climb on heading 157° to 1400 for RADAR vectors to KNTKY, then. . . .

**TAKEOFF RUNWAY 34:** Climb on heading 312° to 2000 for RADAR vectors to KNTKY, then. . . .

. . . .on track 032° to PEETY, then on track 032° to DARTR, then on track 031° to MUSIQ, then on track 031° to CLAVN, then on track 060° to STRYA, then on (transition). Maintain ATC assigned altitude. Expect filed altitude 10 minutes after departure.

DPATY TRANSITION (STRYA8.DPATY)

JBULL TRANSITION (STRYA8.JBULL)



NOTE: Chart not to scale.

SC-5, 22 FEB 2024 to 21 MAR 2024

SC-5, 22 FEB 2024 to 21 MAR 2024

# STRYA EIGHT DEPARTURE (RNAV)

(STRYA8.STRYA) 07OCT21

(STYCK8.STYCK) 21280

AL-6073 (FAA)

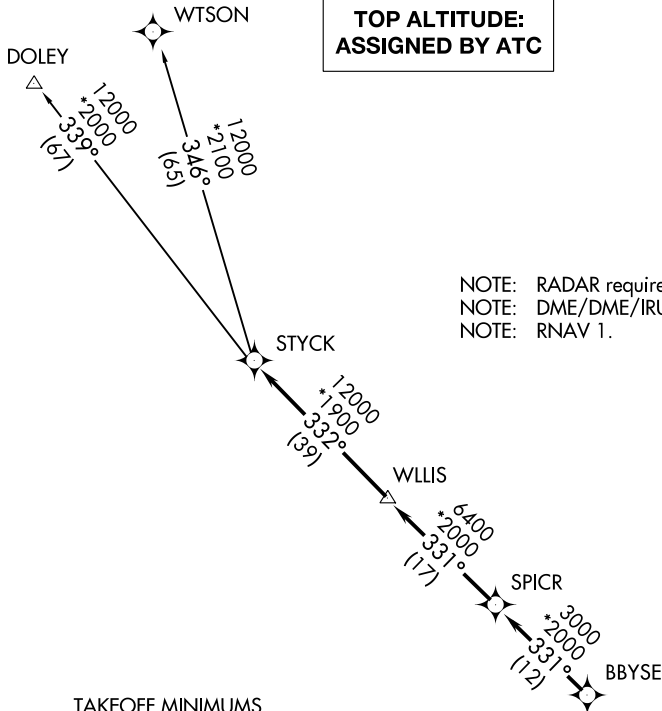
CLEVELAND MUNI (6R3)

# STYCK EIGHT DEPARTURE (RNAV)

CLEVELAND, TEXAS

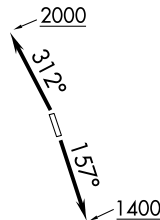
**TOP ALTITUDE:  
ASSIGNED BY ATC**

AWOS-3  
119.325  
CTAF  
123.0  
HOUSTON DEP CON  
119.7 281.4



NOTE: RADAR required.  
NOTE: DME/DME/IRU or GPS required.  
NOTE: RNAV 1.

**TAKEOFF MINIMUMS**  
Rwys 16, 34: Standard with minimum climb of 500' per NM to 660.



NOTE: Chart not to scale.

## DEPARTURE ROUTE DESCRIPTION

**TAKEOFF RUNWAY 16:** Climb on heading 157° to 1400 for RADAR vectors to BBYSE, thence. . .

**TAKEOFF RUNWAY 34:** Climb on heading 312° to 2000 for RADAR vectors to BBYSE, thence. . .

. . . on track 331° to SPICR, then on track 331° to WLLIS, then on track 332° to STYCK, then on (transition). Maintain ATC assigned altitude. Expect filed altitude 10 minutes after departure.

**DOLEY TRANSITION (STYCK8.DOLEY)**  
**WTSON TRANSITION (STYCK8.WTSON)**

# STYCK EIGHT DEPARTURE (RNAV)

(STYCK8.STYCK) 07OCT21

CLEVELAND, TEXAS

CLEVELAND MUNI (6R3)

SC-5, 22 FEB 2024 to 21 MAR 2024

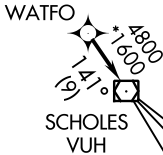
SC-5, 22 FEB 2024 to 21 MAR 2024

# WATFO SIX DEPARTURE (RNAV)

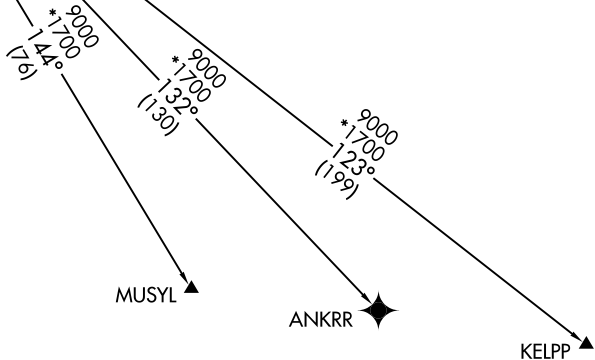
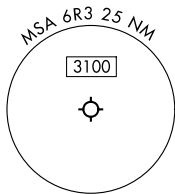
RNAV 1 - DME/DME/IRU or GPS.  
RADAR required.

**TOP ALTITUDE:  
ASSIGNED BY ATC**

AWOS-3  
119.325  
CTAF  
123.0  
HOUSTON DEP CON  
119.7 281.4



TAKEOFF MINIMUMS:  
Rwy 16: Standard with minimum  
climb of 500'/NM to 660.  
Rwy 34: Standard with minimum  
climb of 500'/NM to 1000.



NOTE: Chart not to scale.



## DEPARTURE ROUTE DESCRIPTION

TAKEOFF RUNWAY 16: Climb on heading 157° to 1400, for RADAR vectors to WATFO, thence. . . .

TAKEOFF RUNWAY 34: Climb on heading 337° to 2000, for RADAR vectors to WATFO, thence. . . .

. . . .on track 141° to VUH VOR/DME, then on (transition). Maintain ATC assigned altitude. Expect filed altitude 10 minutes after departure.

ANKRR TRANSITION (WATFO6.ANKRR)

KELPP TRANSITION (WATFO6.KELPP)

MUSYL TRANSITION (WATFO6.MUSYL)

# WYLSN EIGHT DEPARTURE (RNAV)

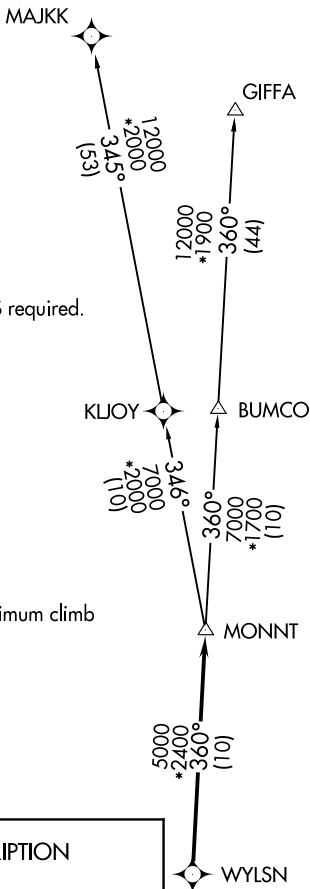
AWOS-3  
119.325  
CTAF  
123.0  
HOUSTON DEP CON  
119.7 281.4

**TOP ALTITUDE:  
ASSIGNED BY ATC**

NOTE: RADAR required.  
NOTE: DME/DME/IRU or GPS required.  
NOTE: RNAV 1.

TAKEOFF MINIMUMS

Rwy 16, 34: Standard with minimum climb of 500' per NM to 660.



**DEPARTURE ROUTE DESCRIPTION**

TAKEOFF RUNWAY 16: Climb on heading 157° to 1400 for RADAR vectors to WYLSN, thence. . . .

TAKEOFF RUNWAY 34: Climb on heading 312° to 2000 for RADAR vectors to WYLSN, thence. . . .

. . . .on track 360° to MONNT, then on (transition). Maintain ATC assigned altitude. Expect filed altitude 10 minutes after departure.

GIFFA TRANSITION (WYLSN8.GIFFA)  
MAJKK TRANSITION (WYLSN8.MAJKK)



NOTE: Chart not to scale.

SC-5, 22 FEB 2024 to 21 MAR 2024

SC-5, 22 FEB 2024 to 21 MAR 2024

# WYLSN EIGHT DEPARTURE (RNAV)