

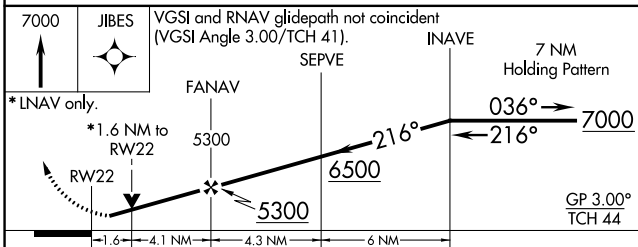
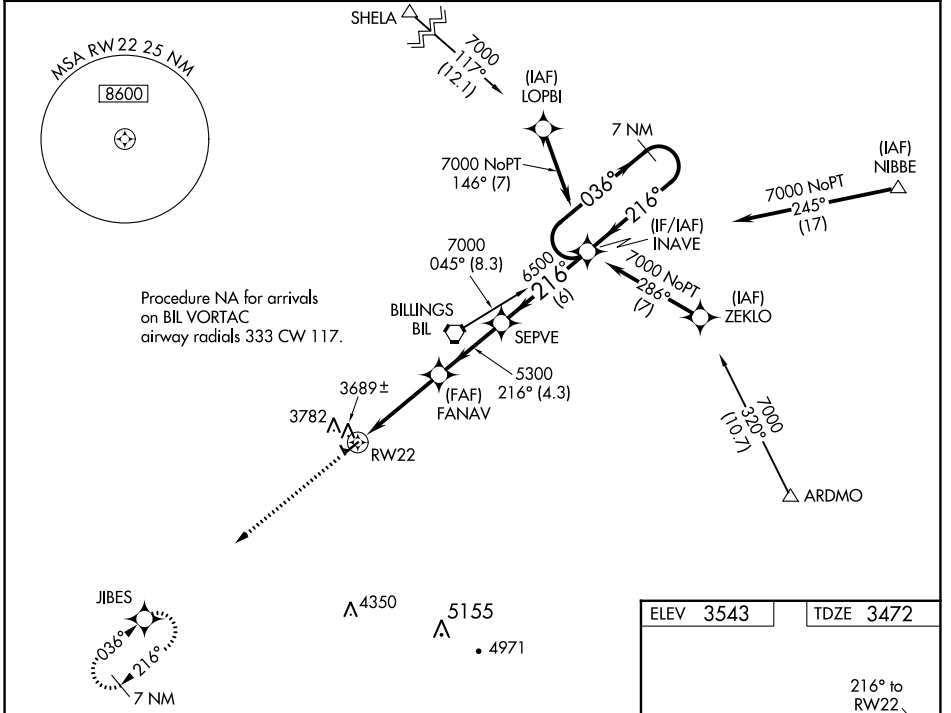
WAAS CH <b>86822</b> <b>W22A</b>	APP CRS <b>216°</b>	Rwy Idg TDZE Apt Elev	<b>5199</b> <b>3472</b> <b>3543</b>
--	------------------------	-----------------------------	---

# RNAV (GPS) RWY 22

LAUREL MUNI (6S8)

RNP APCH.	MISSED APPROACH: Climb to 7000 direct JIBES and hold, continue climb-in-hold to 7000.
<p><b>⚠</b> For uncompensated Baro-VNAV systems, LNAV/VNAV NA below -21°C or above 53°C. When local altimeter setting not received, use Billings altimeter setting. Baro-VNAV and VDP NA when using Billings altimeter setting. Rwy 22 helicopter visibility reduction below ¼ SM NA.</p>	

AWOS-2 <b>135.05</b>	BILLINGS APP CON <b>119.2 120.5 284.6</b>	AUNICOM <b>123.05 (CTAF)</b>
-------------------------	--	---------------------------------



ELEV 3543	TDZE 3472
-----------	-----------

MIRL Rwy 4-22 and 14-32

CATEGORY	A	B	C	D
LPV DA	3767-1		295 (300-1)	
LNAV/VNAV DA	3965-1½		493 (500-1½)	
LNAV MDA	4000-1	528 (500-1)	4000-1½	528 (500-1½)

NW-1, 22 FEB 2024 to 21 MAR 2024

NW-1, 22 FEB 2024 to 21 MAR 2024

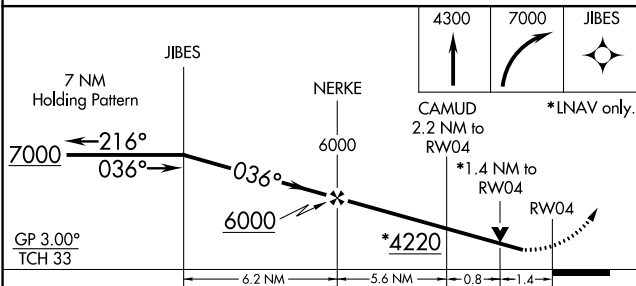
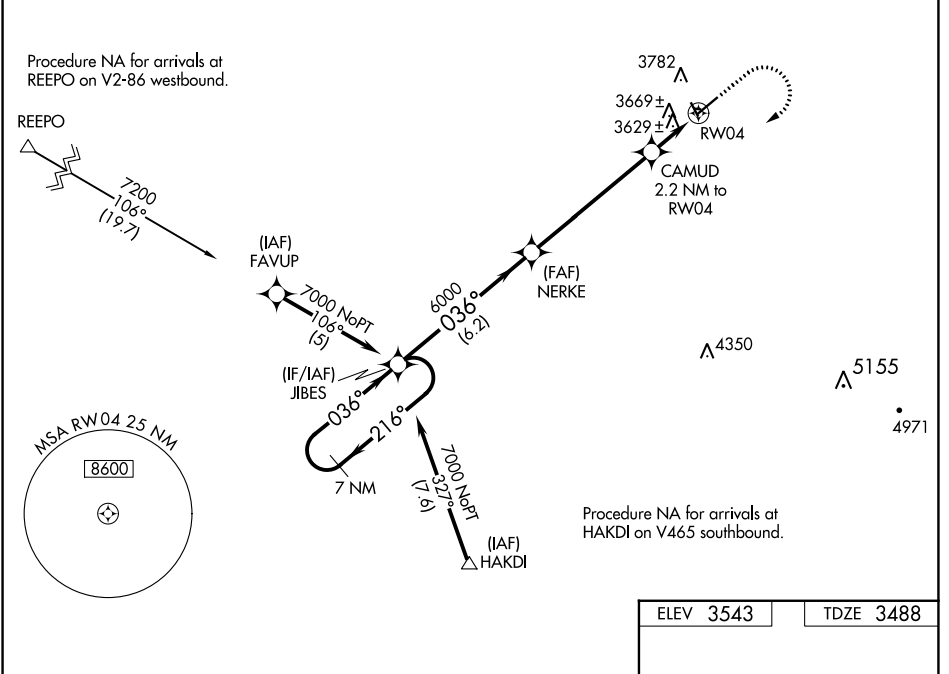
WAAS CH <b>70422</b> W04A	APP CRS <b>036°</b>	Rwy Idg <b>5199</b> TDZE <b>3488</b> Apt Elev <b>3543</b>
---------------------------------	------------------------	---

# RNAV (GPS) RWY 4

LAUREL MUNI (6S8)

RNP APCH.	MISSED APPROACH: Climb to 4300 then climbing right turn to 7000 direct JIBES and hold.
<p>▼ For uncompensated Baro-VNAV systems, LNAV/VNAV NA below -21°C or above 54°C. When local altimeter setting not received, use Billings altimeter setting. Baro-VNAV and VDP NA when using Billings altimeter setting. Rwy 4 helicopter visibility reduction below 3/4 SM NA.</p>	

AWOS-2 <b>135.05</b>	BILLINGS APP CON <b>119.2 120.5 284.6</b>	AUNICOM <b>123.05 (CTAF) 0</b>
-------------------------	--	-----------------------------------



ELEV 3543	TDZE 3488
-----------	-----------

3529

1100, 700, 600, 500, 400, 300, 200, 100

5199 X75 -0.6% UP

300 X90 -2.0% UP

2.4% UP

0.6% UP

036° to RW04

MIRL Rwy 4-22 and 14-32 0

CATEGORY	A	B	C	D
LPV DA	3783-1 295 (300-1)			
LNAV/VNAV DA	3981-1 <sup>3</sup> / <sub>4</sub> 493 (500-1 <sup>3</sup> / <sub>4</sub> )			
LNAV MDA	3980-1 492 (500-1)	3980-1 <sup>3</sup> / <sub>8</sub> 492 (500-1 <sup>3</sup> / <sub>8</sub> )		

NW-1, 22 FEB 2024 to 21 MAR 2024

NW-1, 22 FEB 2024 to 21 MAR 2024

VORTAC BIL <b>114.5</b> Chan 92	APP CRS <b>208°</b>	Rwy Idg TDZE Apt Elev	<b>5199</b> <b>3472</b> <b>3543</b>
---------------------------------------	------------------------	-----------------------------	---

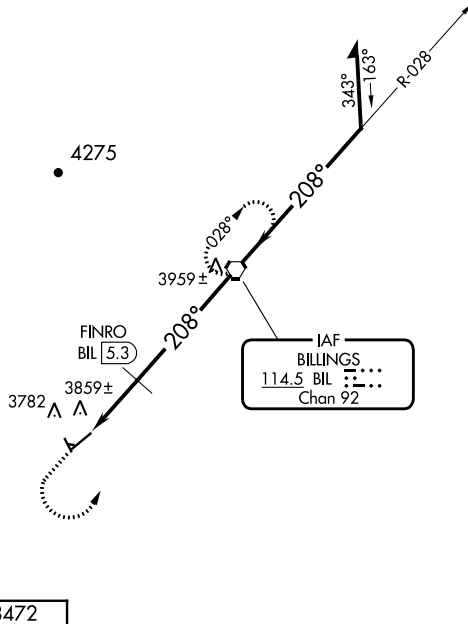
# VOR RWY 22

LAUREL MUNI (6S8)

⚠ When local altimeter setting not received, use Billings altimeter setting: increase Circling Cats C and D MDAs 60 feet and Circling Cat C visibility ¼ SM; FINRO fix minimums: increase Circling Cats C and D MDAs 60 feet and Circling Cat C visibility ¼ SM. Rwy 22 helicopter visibility reduction below ¾ SM NA. Circling NA to Rwy 9 and 27. Circling Rwy 14, 32 NA at night.

MISSED APPROACH: Climb to 4700 then climbing left turn to 6300 direct BIL VORTAC and hold.

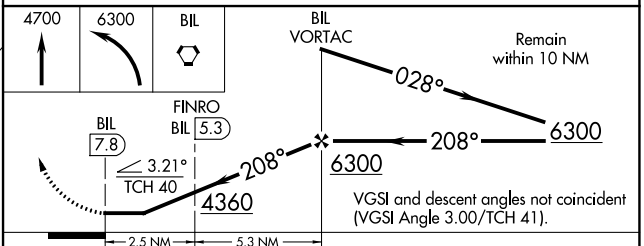
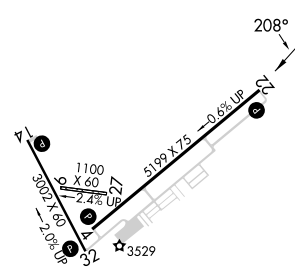
AWOS-2 <b>135.05</b>	BILLINGS APP CON <b>119.2 120.5 284.6</b>	AUNICOM <b>123.05 (CTAF) ①</b>
-------------------------	--	-----------------------------------



NW-1, 22 FEB 2024 to 21 MAR 2024

NW-1, 22 FEB 2024 to 21 MAR 2024

ELEV 3543	TDZE 3472
-----------	-----------



MIRL Rwy 4-22 and 14-32 ①					
FAF to MAP 7.8 NM					
Knots	60	90	120	150	180
Min:Sec	7:48	5:12	3:54	3:07	2:36

CATEGORY	A	B	C	D
S-22	4360-1¼ 888 (900-1¼)		4360-2¾ 888 (900-2¾)	4360-3 888 (900-3)
CIRCLING	4360-1¼ 817 (900-1¼)		4460-2¾ 917 (1000-2¾)	4560-3 1017 (1100-3)
FINRO FIX MINIMUMS				
S-22	4160-1 688 (700-1)		4160-2 688 (700-2)	4160-2¼ 688 (700-2¼)
CIRCLING	4220-1 677 (700-1)		4460-2¾ 917 (1000-2¾)	4560-3 1017 (1100-3)