

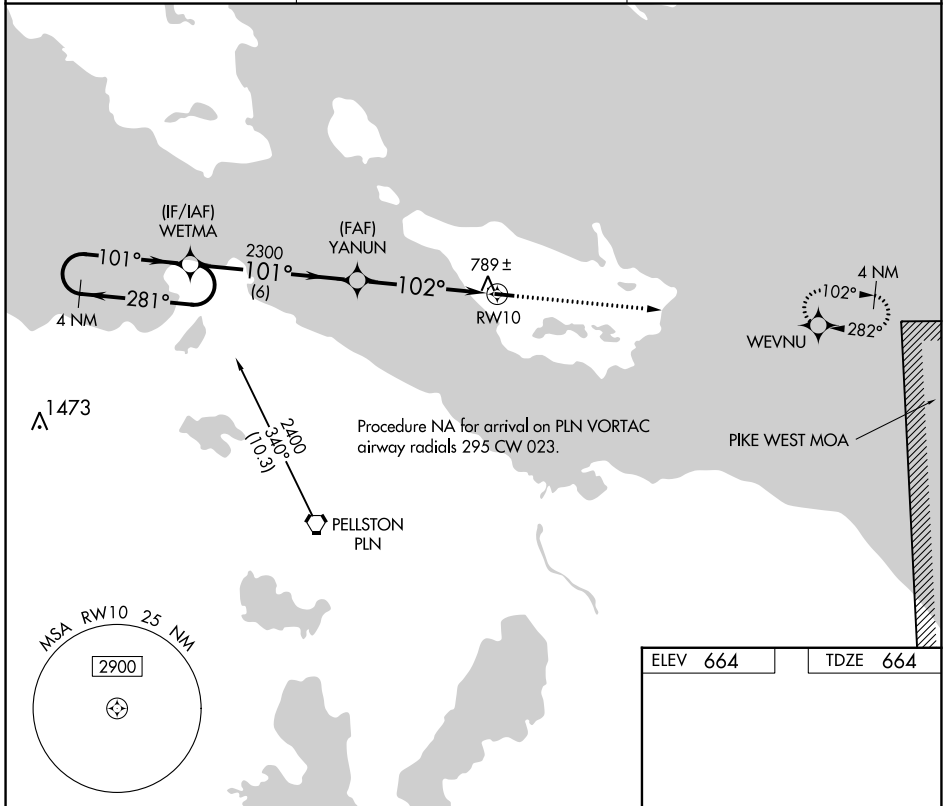
APP CRS	Rwy Idg	3498
102°	TDZE	664
	Apt Elev	664

RNAV (GPS) RWY 10

BOIS BLANC ISLAND (6Y1)

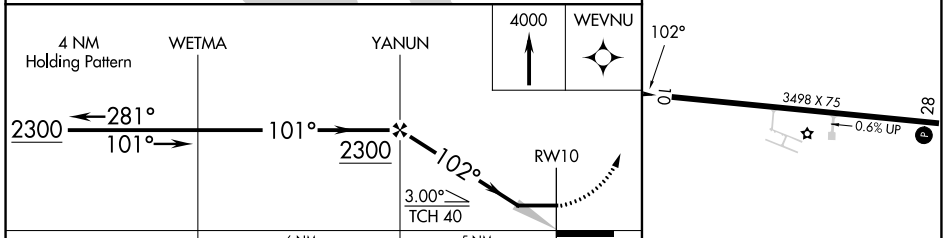
NA	DME/DME RNP-0.3 NA. Use Cheboygan altimeter setting.	MISSED APPROACH: Climb to 4000 direct WEVNU and hold, continue climb-in-hold to 4000.
----	---	---

SLH AWOS-3 118.175	MINNEAPOLIS CENTER 134.6 354.05	CTAF 122.9
------------------------------	---	----------------------



EC-1, 22 FEB 2024 to 21 MAR 2024

EC-1, 22 FEB 2024 to 21 MAR 2024



CATEGORY	A	B	C	D
LNVA MDA	1060-1	396 (400-1)	NA	
CIRCLING	1120-1	456 (500-1)	NA	

ELEV 664	TDZE 664
----------	----------

REIL Rwy 28

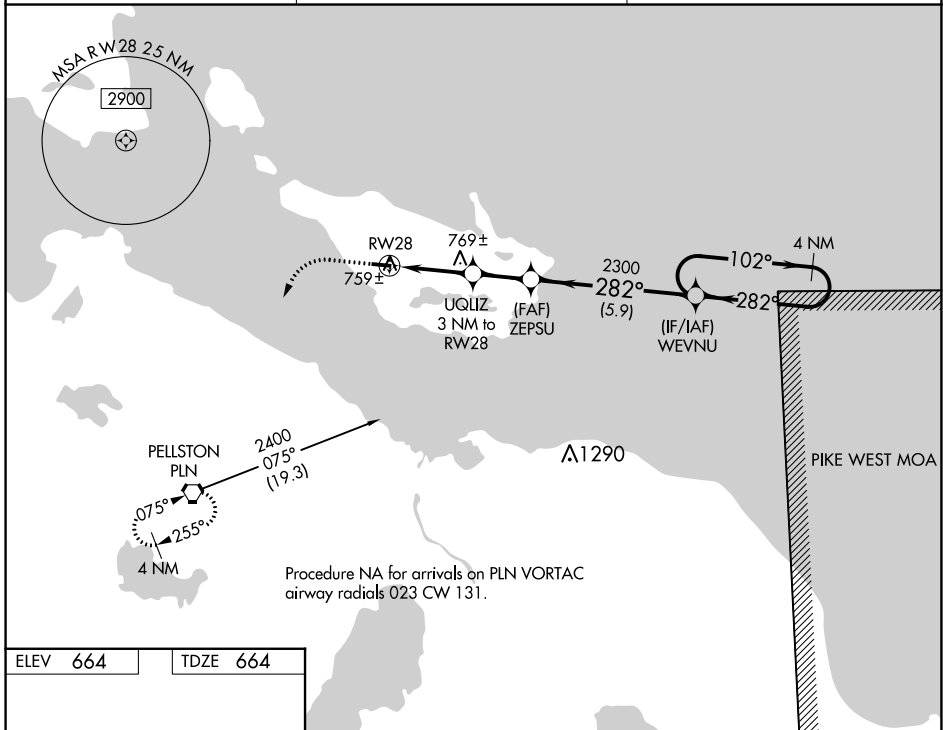
MIRL Rwy 10-28

WAAS CH 42735 W28A	APP CRS 282°	Rwy Idg TDZE Apt Elev	3498 664 664
--	------------------------	-----------------------------	---

RNAV (GPS) RWY 28

BOIS BLANC ISLAND (6Y1)

NA	Use Cheboygan altimeter setting; when not received, Mackinac Island altimeter setting. DME/DME RNP-0.3 NA.	MISSED APPROACH: Climb to 3000 direct PELLSTON VORTAC and hold.
SLH AWOS-3 118.175	MINNEAPOLIS CENTER 134.6 354.05	CTAF 122.9



ELEV 664	TDZE 664
REIL Rwy 28	MIRL Rwy 10-28

3000	PLN	VGSJ and descent angles not coincident (VGSJ Angle 4.00/TCH 33).	
↑	⬡	UQLIZ 3 NM to RWY 28	WEVNU 4 NM Holding Pattern
10	282°	2300	2300
1620	3.00° TCH 40	282°	102°
3 NM	2.1 NM	5.9 NM	
CATEGORY	A	B	C D
LP MDA	1040-1	376 (400-1)	NA
LNAV MDA	1060-1	396 (400-1)	NA
C CIRCLING	1120-1	456 (500-1)	NA

EC-1, 22 FEB 2024 to 21 MAR 2024

EC-1, 22 FEB 2024 to 21 MAR 2024