

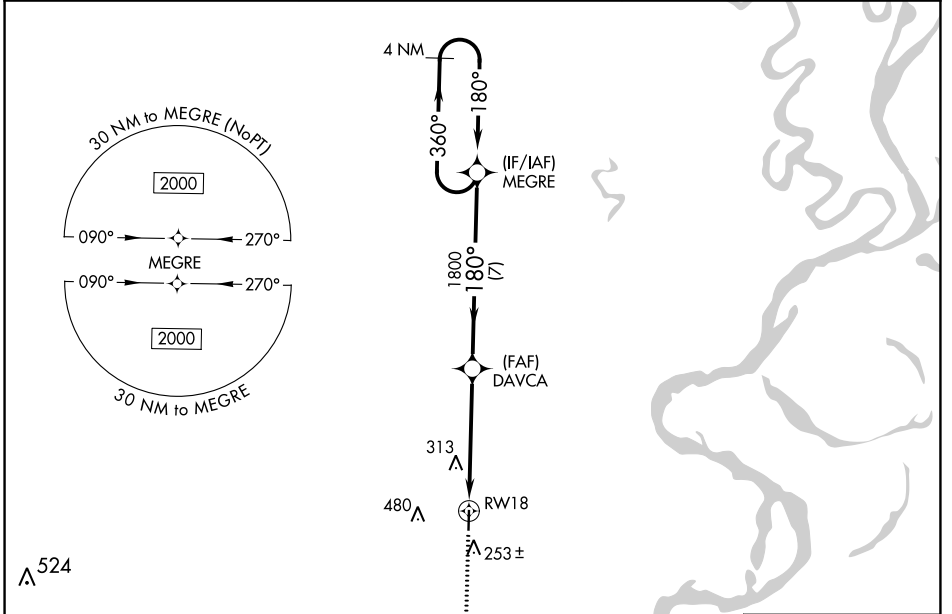
WAAS CH <b>86425</b> <b>W18A</b>	APP CRS <b>180°</b>	Rwy Idg TDZE <b>141</b> Apt Elev <b>141</b>	<b>4007</b>
--	------------------------	---	-------------

# RNAV (GPS) RWY 18

MC GEHEE MUNI (7M1)

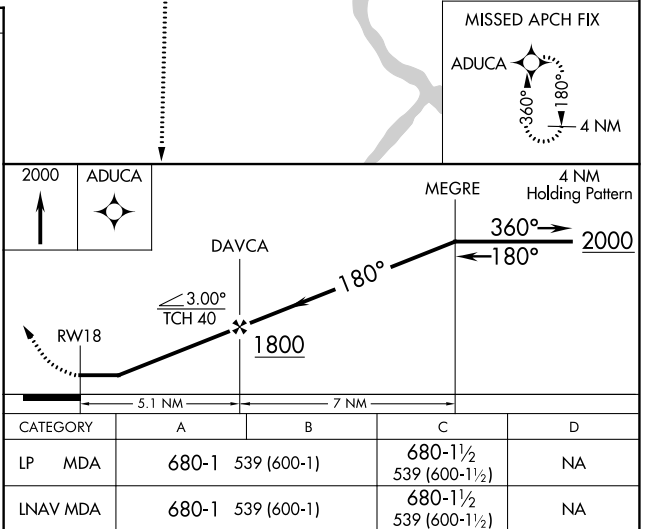
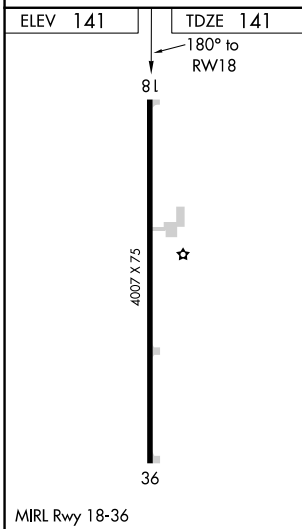
RNP APCH.	MISSED APPROACH: Climb to 2000 direct ADUCA and hold.
<p>Rwy 18 helicopter visibility reduction below 3/4 SM NA. Use Greenville, MS altimeter setting, when not received use Monticello altimeter.</p>	

GLH ASOS <b>125.525</b>	MEMPHIS CENTER <b>135.875 269.35</b>	CTAF <b>122.9</b>
----------------------------	---	----------------------



SC-1, 22 FEB 2024 to 21 MAR 2024

SC-1, 22 FEB 2024 to 21 MAR 2024



WAAS CH <b>61025</b> <b>W36A</b>	APP CRS <b>360°</b>	Rwy Idg TDZE Apt Elev	<b>4007</b> <b>141</b> <b>141</b>
--	------------------------	-----------------------------	---

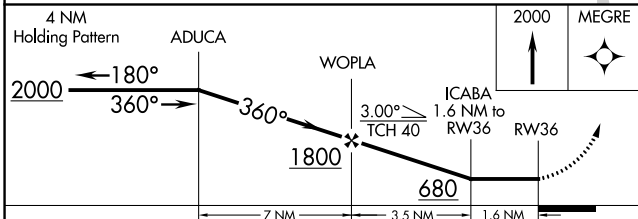
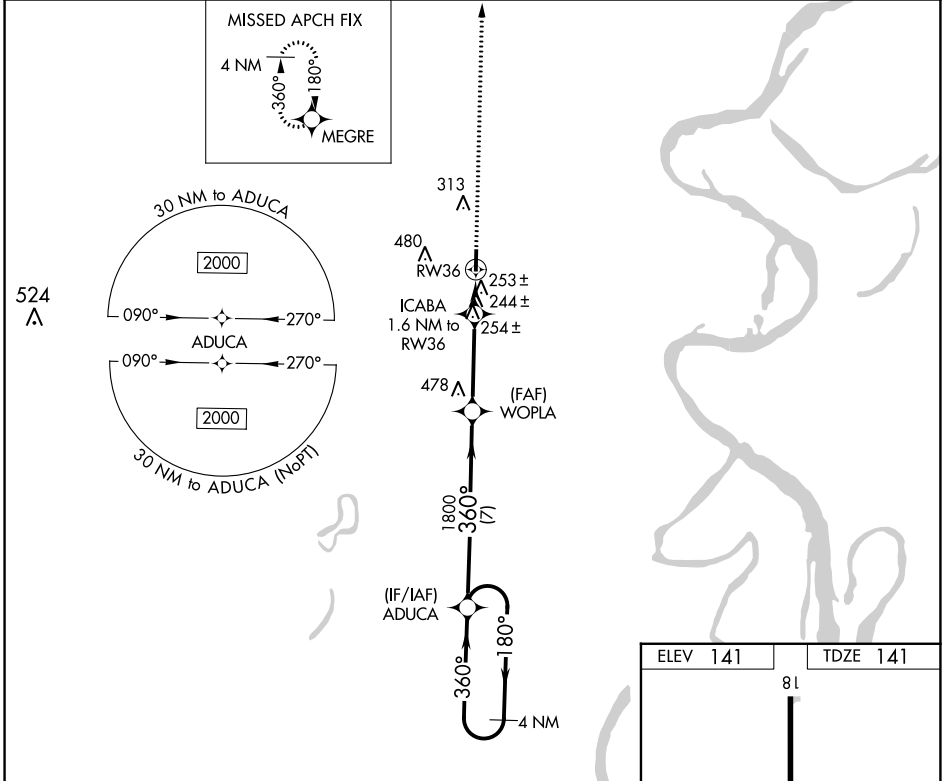
# RNAV (GPS) RWY 36

MC GEHEE MUNI (7M1)

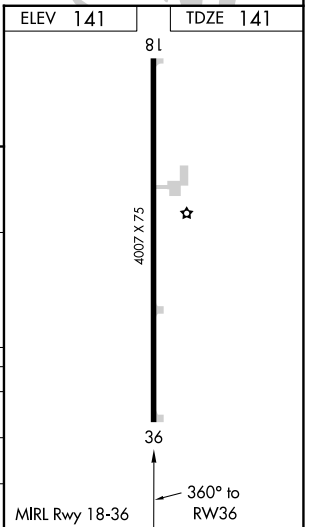
**NA** Circling NA west of Rwy 18-36. DME/DME RNP-0.3 NA. Helicopter visibility reduction below 3/4 SM NA. Use Greenville, MS altimeter setting, when not received use Monticello altimeter.

MISSED APPROACH: Climb to 2000 direct MEGRE and hold.

GLH ASOS <b>125.525</b>	MEMPHIS CENTER <b>135.875 269.35</b>	CTAF <b>122.9</b>
----------------------------	---	----------------------



CATEGORY	A	B	C	D
LP MDA	560-1	419 (500-1)	560-1 1/8 419 (500-1 1/8)	NA
LNAV MDA	560-1	419 (500-1)	560-1 1/8 419 (500-1 1/8)	NA
CIRCLING	660-1	519 (600-1)	660-1 3/4 519 (600-1 3/4)	NA



SC-1, 22 FEB 2024 to 21 MAR 2024

SC-1, 22 FEB 2024 to 21 MAR 2024