

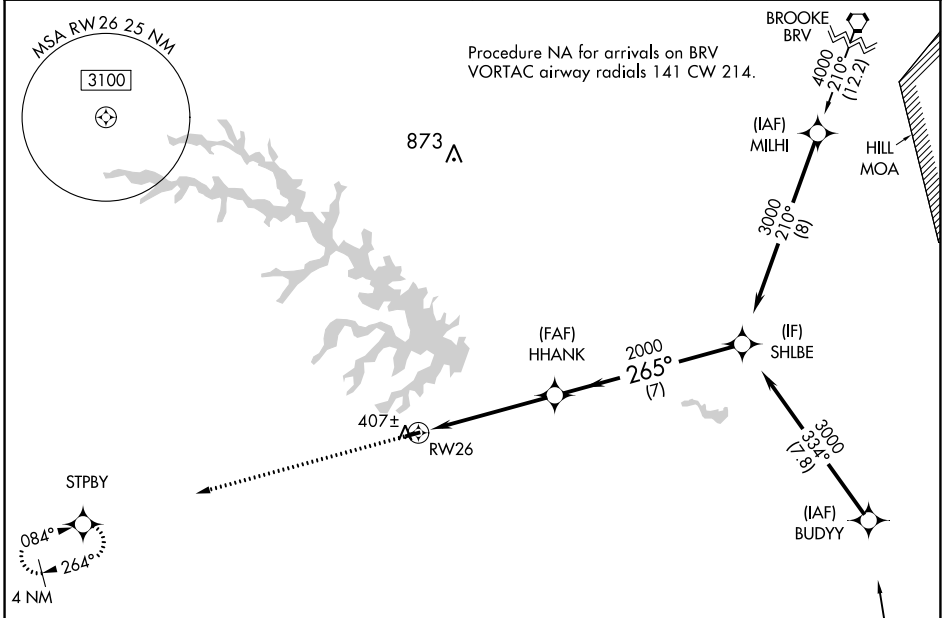
APP CRS	Rwy Idg	2558
265°	TDZE	351
	Apt Elev	351

RNAV (GPS) RWY 26

LAKE ANNA (7W4)

RNP APCH.	<p>Procedure NA at night. When local altimeter setting not received, use Louisa altimeter setting and increase all MDA 60 feet. Helicopter visibility reduction below 3 SM NA.</p>	<p>MISSED APPROACH: Climb to 3000 direct STPBY and hold.</p>
<p>▽ Procedure NA at night. When local altimeter setting not received, use Louisa altimeter setting and increase all MDA 60 feet. ▲ Helicopter visibility reduction below 3 SM NA.</p>		

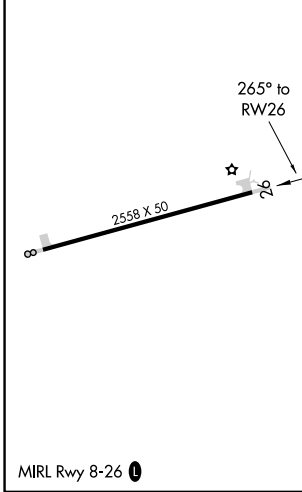
AWOS-3 120.775	LKU AWOS-3 119.475	POTOMAC APP CON 126.75 307.2	CTAF 122.9
--------------------------	------------------------------	--	----------------------



NE-3, 22 FEB 2024 to 21 MAR 2024

NE-3, 22 FEB 2024 to 21 MAR 2024

ELEV 351	TDZE 351
----------	----------



Procedure NA for arrivals on RIC VORTAC airway radials 283 CW 048.

Visual Segment - Obstacles.

3000	STPBY	SHLBE		
↑	✦	3000		
HHANK				
2000				
5.1 NM		7 NM		
CATEGORY	A	B	C	D
LNAV MDA	1360-3	1009 (1100-3)	NA	
CIRCLING	1360-3	1009 (1100-3)	NA	

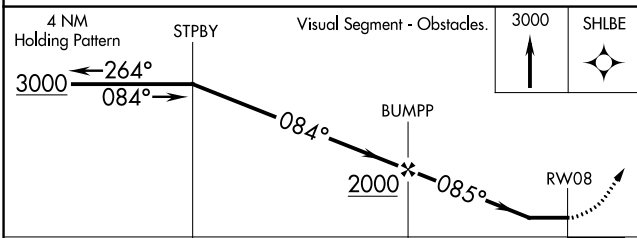
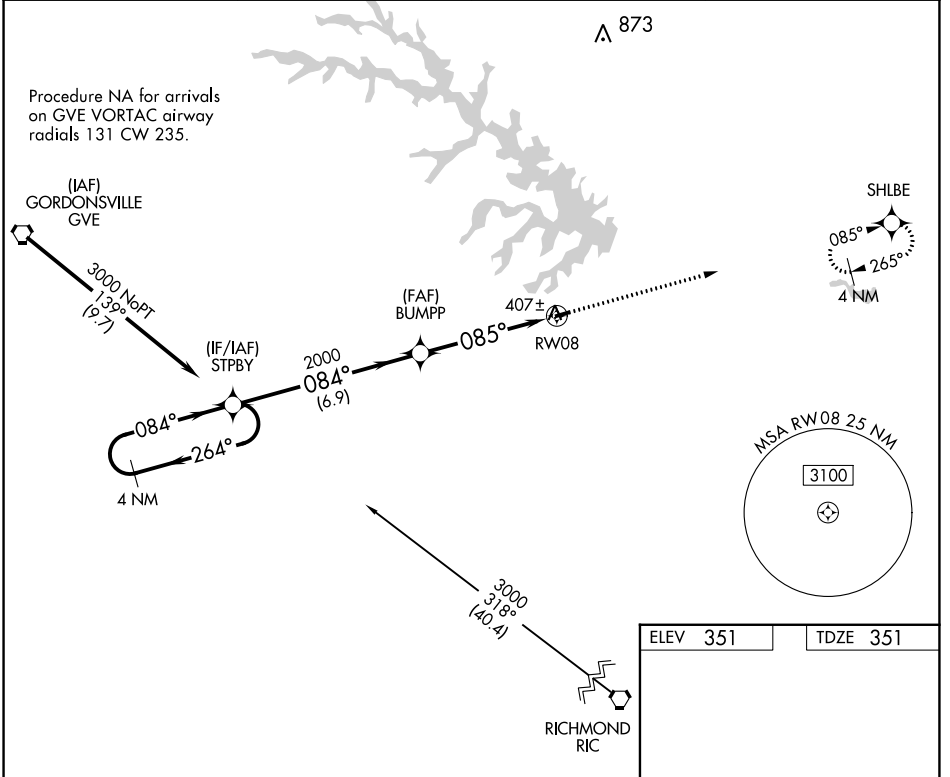
APP CRS	Rwy Idg	2558
085°	TDZE	351
	Apt Elev	351

RNAV (GPS) RWY 8

LAKE ANNA (7W4)

RNP APCH.	<p>MISSED APPROACH: Climb to 3000 direct SHLBE and hold.</p>
<p>Procedure NA at night. When local altimeter setting not received, use Louisa altimeter setting and increase all MDA 60 feet. Helicopter visibility reduction below 3 SM NA.</p>	

AWOS-3 120.775	LKU AWOS-3 119.475	POTOMAC APP CON 126.75 307.2	CTAF 122.9
--------------------------	------------------------------	--	----------------------



ELEV 351	TDZE 351
----------	----------

2558 X 50

085° to RW08

MIRL Rwy 8-26

CATEGORY	A	B	C	D
LNAV MDA	1360-3	1009 (1100-3)	NA	
CIRCLING	1360-3	1009 (1100-3)	NA	

NE-3, 22 FEB 2024 to 21 MAR 2024

NE-3, 22 FEB 2024 to 21 MAR 2024