

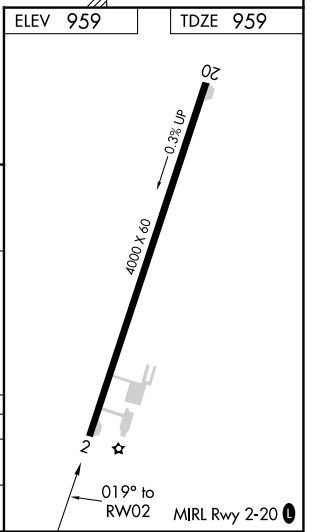
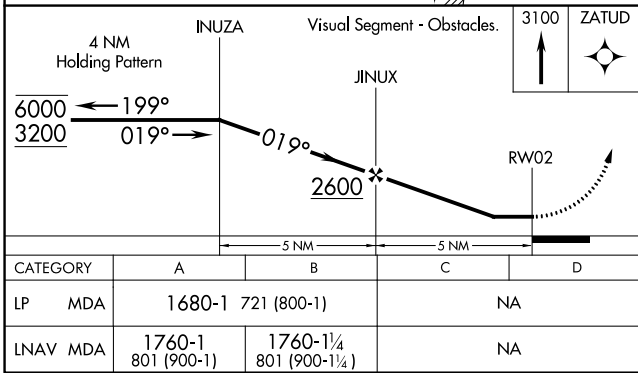
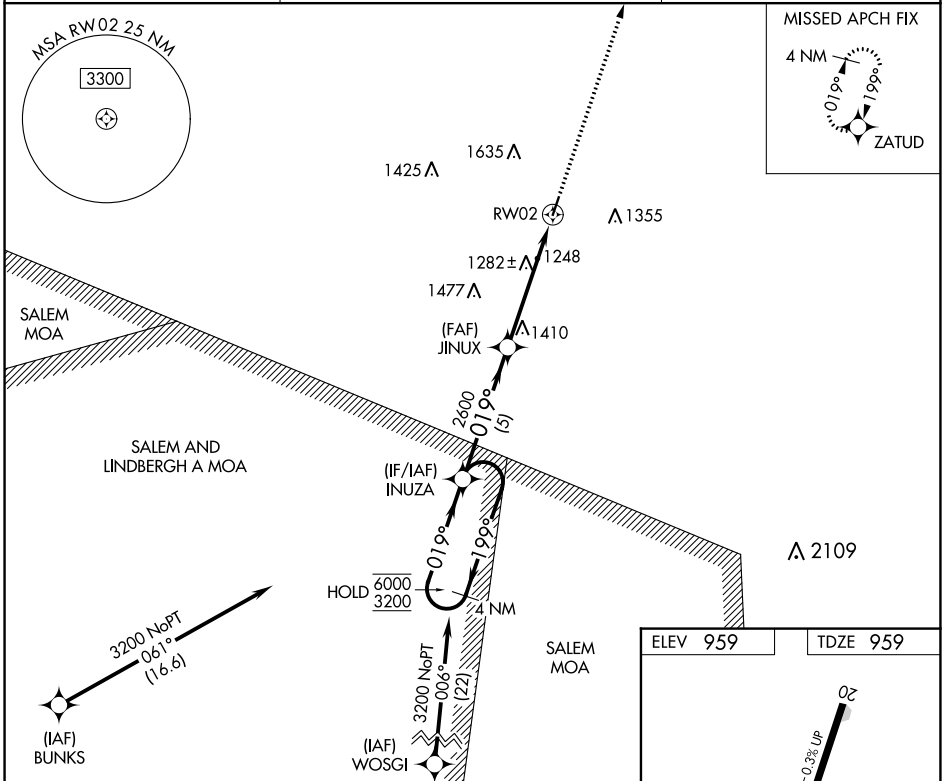
WAAS CH <b>93624</b> <b>W02A</b>	APP CRS <b>019°</b>	Rwy Idg TDZE Apt Elev	<b>4000</b> <b>959</b> <b>959</b>
--	------------------------	-----------------------------	---

# RNAV (GPS) RWY 2

WASHINGTON COUNTY (8WC)

RNP APCH-GPS.		MISSED APPROACH: Climb to 3100 direct ZATUD and hold.
NA Rwy 2 helicopter visibility reduction below 3/4 SM NA. Use Farmington altimeter setting.		

FAM AWOS-3PT <b>119.275</b>	KANSAS CITY CENTER <b>128.35 284.675</b>	UNICOM <b>123.0 (CTAF)</b>
--------------------------------	---	-------------------------------



NC-3, 22 FEB 2024 to 21 MAR 2024

NC-3, 22 FEB 2024 to 21 MAR 2024

WAAS CH <b>86721</b> W20A	APP CRS <b>199°</b>	Rwy Idg TDZE Apt Elev	<b>4000</b> <b>958</b> <b>959</b>
---------------------------------	------------------------	-----------------------------	---

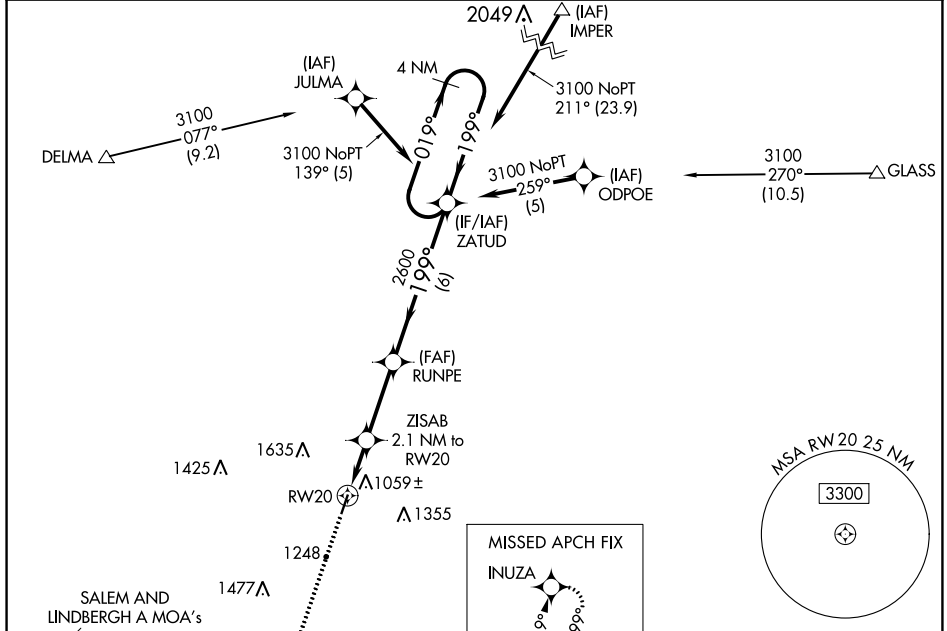
# RNAV (GPS) RWY 20

WASHINGTON COUNTY (8WC)

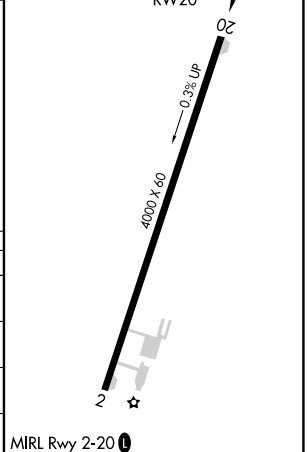
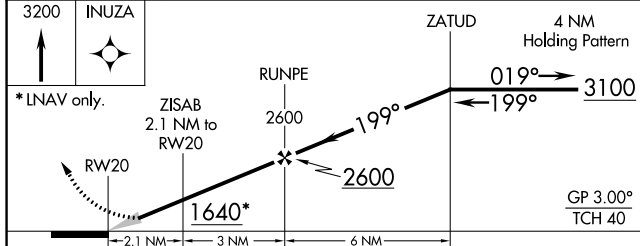
**Baro-VNAV NA.** DME/DME RNP-0.3 NA. Use Farmington altimeter setting, when not received, use Rolla NH altimeter setting and increase all DA/MDA 100 feet; increase LPV Cats A/B visibility 3/8 mile and increase LNAV/VNAV Cats A/B 1/4 mile. Circling NA west of Rwy 2-20.

MISSED APPROACH: Climb to 3200 direct INUZA and hold.

FAM AWOS-3PT <b>119.275</b>	KANSAS CITY CENTER <b>128.35 284.675</b>	UNICOM <b>123.0</b> (CTAF) <b>0</b>
--------------------------------	---	--



ELEV 959	TDZE 958
----------	----------



CATEGORY	A	B	C	D
LPV DA	1253-1	295 (300-1)		NA
LNAV / VNAV DA	1278-1 1/8	320 (400-1 1/8)		NA
LNAV MDA	1360-1	402 (500-1)		NA
CIRCLING	1580-1 621 (700-1)	1600-1 641 (700-1)		NA

NC-3, 22 FEB 2024 to 21 MAR 2024

NC-3, 22 FEB 2024 to 21 MAR 2024