

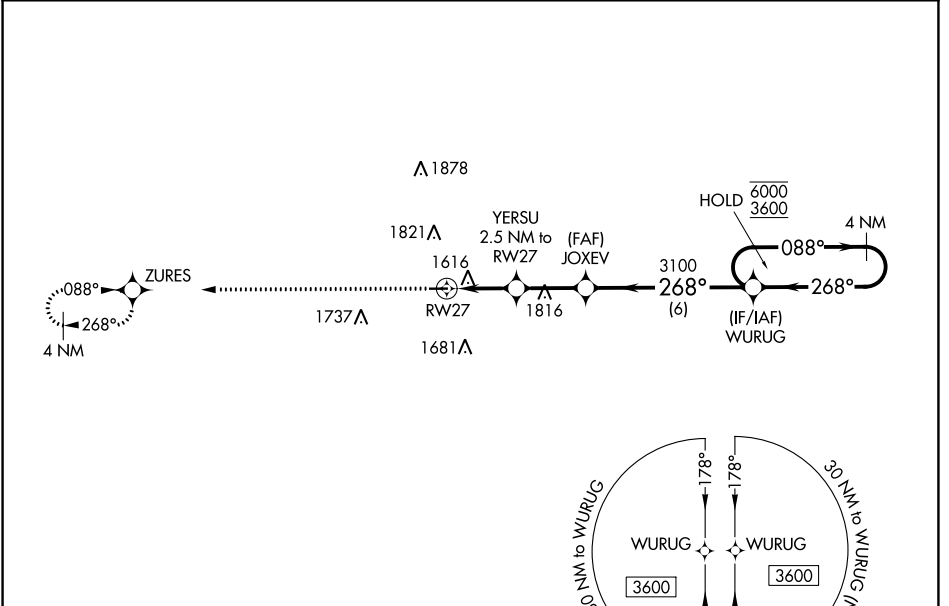
WAAS CH 50331 W27A	APP CRS 268°	Rwy Idg TDZE Apt Elev	3599 1483 1483
--	------------------------	-----------------------------	---

RNAV (GPS) RWY 27

CASSVILLE MUNI (94K)

RNP APCH - GPS.	MISSED APPROACH: Climb to 3300 direct ZURES and hold.
<p>▽ Procedure NA at night. Use Monett altimeter setting, when not received, use Rogers altimeter setting and increase all MDA 20 feet. Increase LP Cat C visibility 1/8 SM.</p> <p>△ NA</p>	

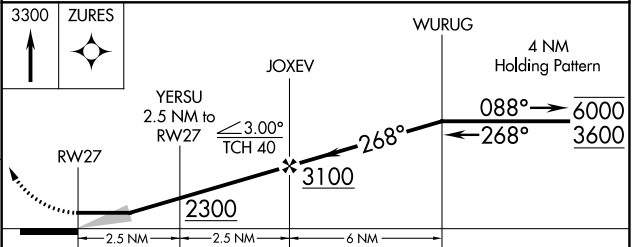
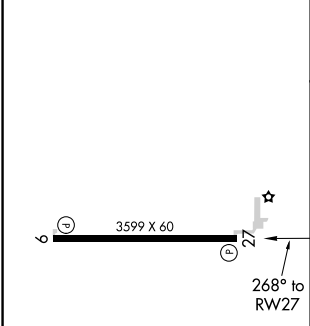
HFJ AWOS-3 118.275	SPRINGFIELD APP CON 124.95 318.2	CTAF 122.9
------------------------------	--	----------------------



NC-3, 22 FEB 2024 to 21 MAR 2024

NC-3, 22 FEB 2024 to 21 MAR 2024

ELEV 1483	TDZE 1483
------------------	------------------



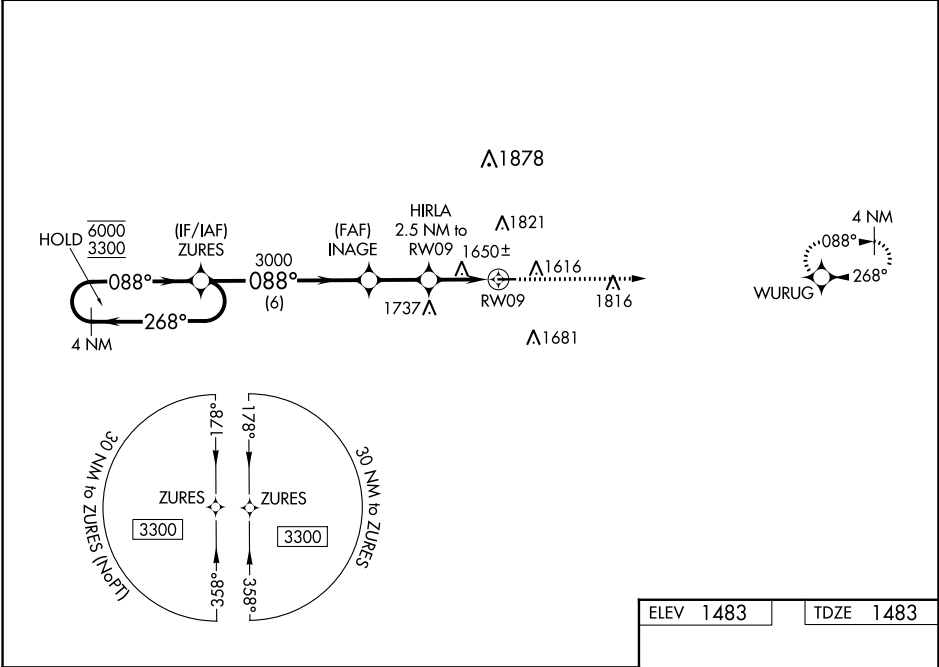
CATEGORY	A	B	C	D
LP MDA	1920-1	437 (500-1)	1920-1¼ 437 (500-1¼)	NA
LNAV MDA	1940-1	457 (500-1)	1940-1⅝ 457 (500-1⅝)	NA
C CIRCLING	2000-1 517 (600-1)	2180-1 697 (700-1)	2180-2 697 (700-2)	NA

WAAS CH 63133 W09A	APP CRS 088°	Rwy Idg 3599 TDZE 1483 Apt Elev 1483
--	------------------------	---

RNAV (GPS) RWY 9

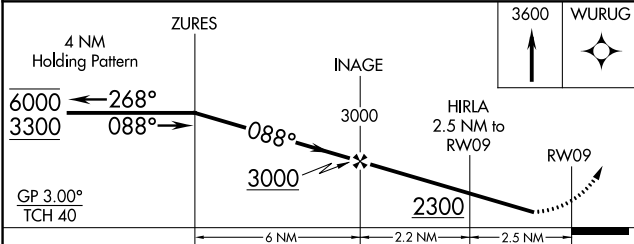
CASSVILLE MUNI (94K)

RNP APCH - GPS.		MISSED APPROACH: Climb to 3600 direct WURUG and hold.
<p>▽ Rwy 9 helicopter visibility reduction below 3/4 SM NA. Baro-VNAV NA.</p> <p>△ NA Use Monett altimeter setting; when not received, use Rogers altimeter setting and increase LPV DA to 1906 feet and visibility 1/8 SM all Cats, LNAV/VNAV DA to 2011 feet and visibility 1/8 SM all Cats; increase all MDAs 20 feet.</p>		
HFJ AWOS-3 118.275	SPRINGFIELD APP CON 124.95 318.2	CTAF 122.9



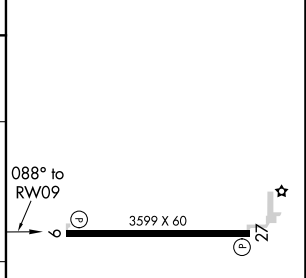
NC-3, 22 FEB 2024 to 21 MAR 2024

NC-3, 22 FEB 2024 to 21 MAR 2024



ELEV 1483	TDZE 1483
-----------	-----------

CATEGORY	A	B	C	D
LPV DA	1893-1 1/8	410 (500-1 1/8)		NA
LNAV/VNAV DA	1998-1 3/8	515 (600-1 3/8)		NA
LNAV MDA	1960-1	477 (500-1)	1960-1 3/8 477 (500-1 3/8)	NA
C CIRCLING	2000-1 517 (600-1)	2180-1 697 (700-1)	2180-2 697 (700-2)	NA



MRL Rwy 9-27