

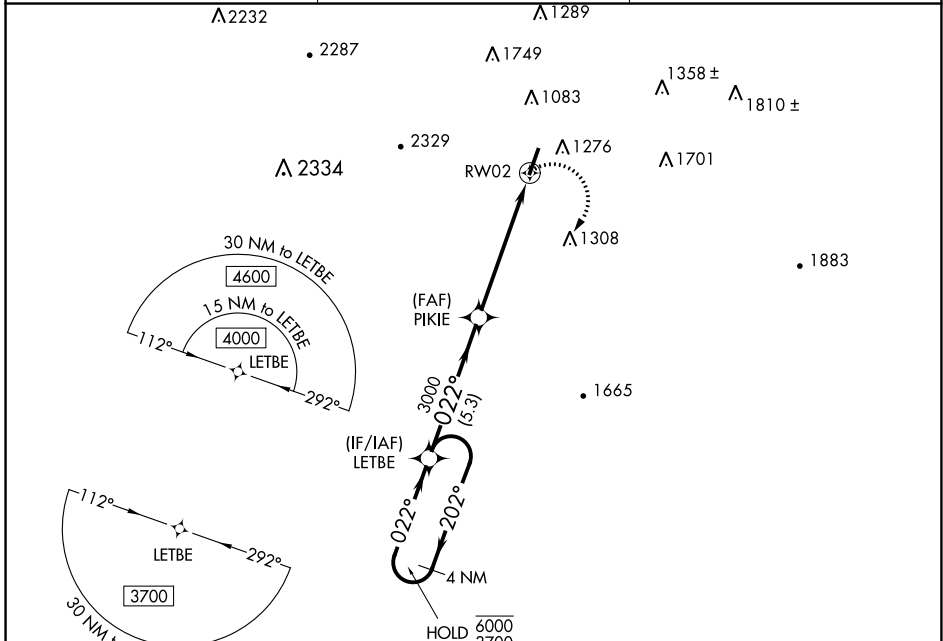
APP CRS	Rwy Idg	5350
022°	TDZE	772
	Apt Elev	776

RNAV (GPS) RWY 2

BARWICK LAFAYETTE (9A5)

RNP APCH - GPS.	MISSED APPROACH: Climbing right turn to 3700 direct LETBE and hold, continue to climb-in-hold to 3700.
<p>▼ Procedure NA at night. Rwy 2 helicopter visibility reduction below 1 SM NA. When local altimeter not received, use Chattanooga altimeter setting and increase all MDAs 80 feet.</p>	

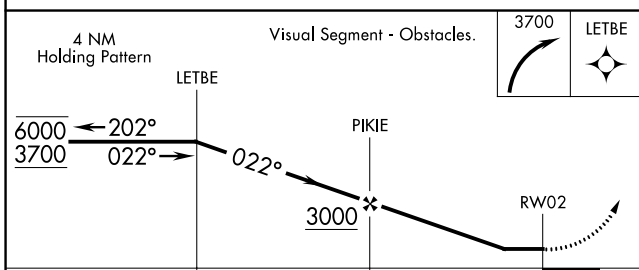
AWOS-3 119.775	CHATTANOOGA APP CON ★ 125.1 379.1	UNICOM 122.8 (CTAF) 0
--------------------------	---	---------------------------------



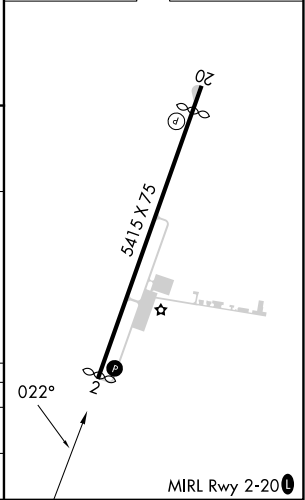
SE-4, 22 FEB 2024 to 21 MAR 2024

SE-4, 22 FEB 2024 to 21 MAR 2024

ELEV 776	D TDZE 772
----------	-------------------



CATEGORY	A	B	C	D
LNAV MDA	1480-1708 (800-1)		NA	
C CIRCLING	1660-1884 (900-1¼)		NA	



WAAS CH 86241 W20A	APP CRS 203°	Rwy Idg TDZE Apt Elev	4966 776 776
--	------------------------	-----------------------------	---

RNAV (GPS) RWY 20

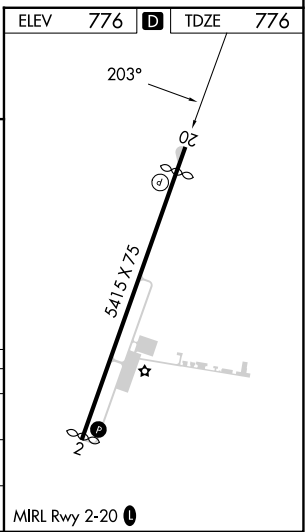
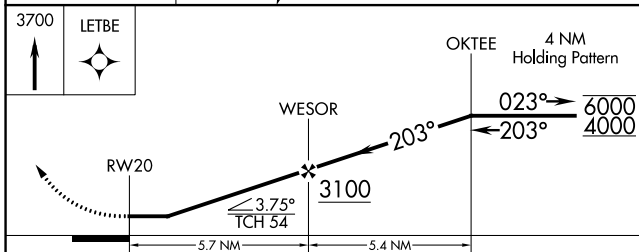
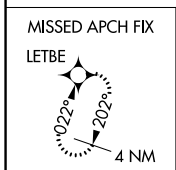
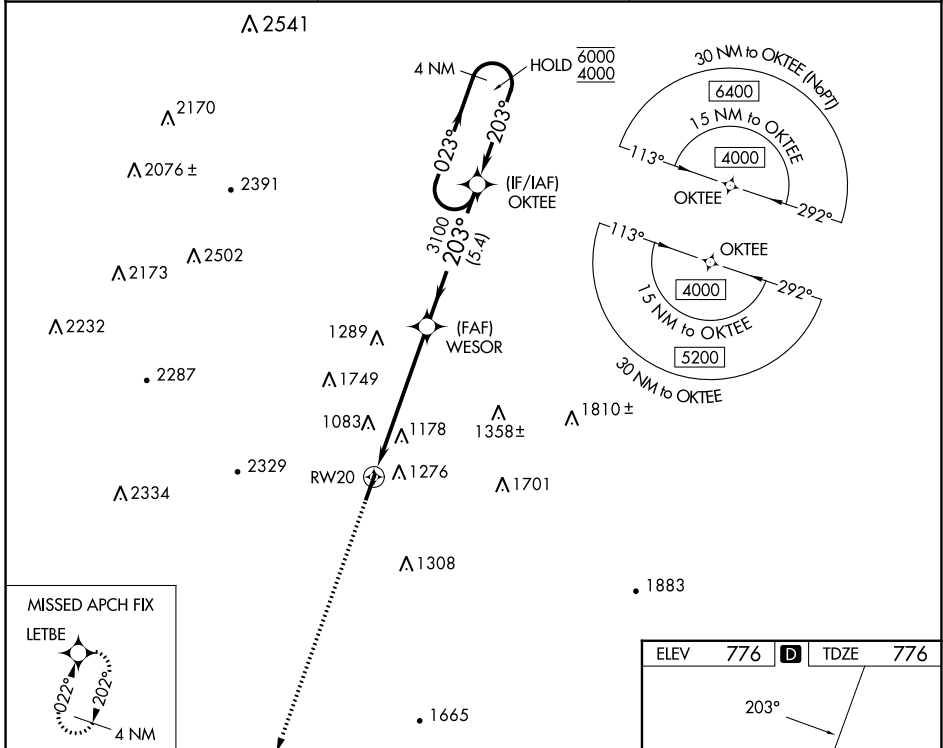
BARWICK LAFAYETTE (9A.5)

RNP APCH - GPS.

Procedure NA at night. Rwy 20 helicopter visibility reduction below 1 SM NA.
When local altimeter setting not received, use Chattanooga altimeter setting and increase all MDAs 80 feet.

MISSED APPROACH: Climb to 3700 direct LETBE and hold.

AWOS-3 119.775	CHATTANOOGA APP CON * 125.1 379.1	UNICOM 122.8 (CTAF) 0
--------------------------	---	---------------------------------



CATEGORY	A	B	C	D
LP MDA	1380-1 604 (700-1)		NA	
LNAV MDA	1440-1 664 (700-1)		NA	
CIRCLING	1660-1½ 884 (900-1½)		NA	

SE-4, 22 FEB 2024 to 21 MAR 2024

SE-4, 22 FEB 2024 to 21 MAR 2024