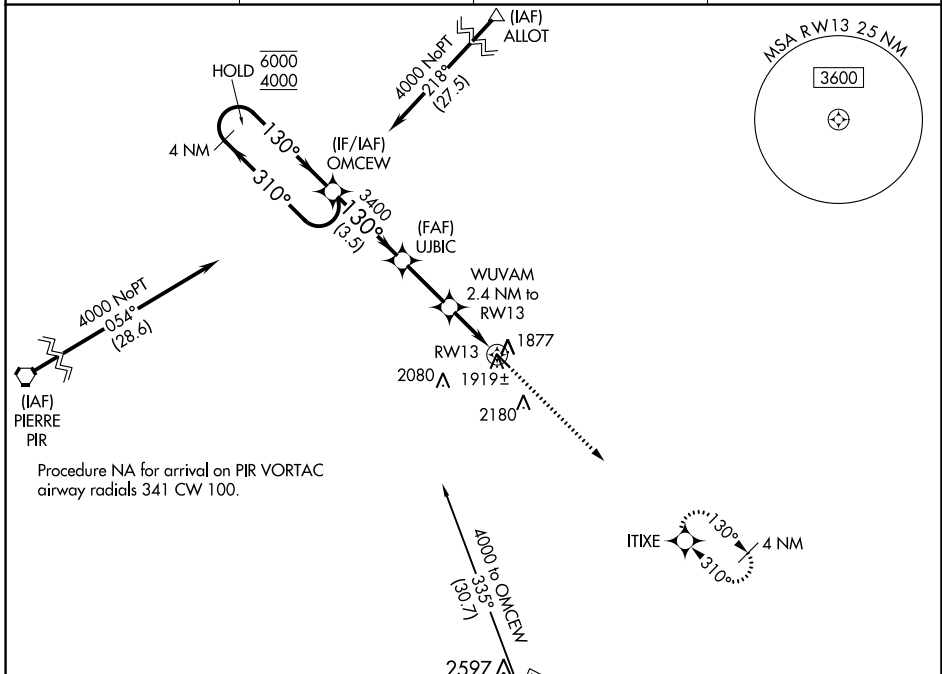


WAAS CH 72839 W13A	APP CRS 130°	Rwy ldg TDZE Apt Elev	3701 1852 1854
--	------------------------	-----------------------------	---

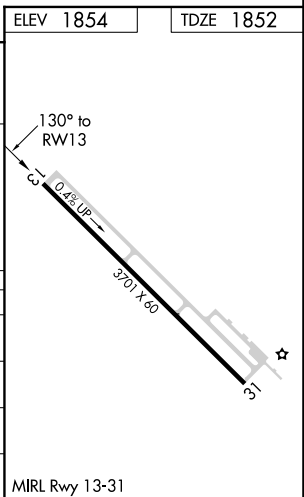
RNAV (GPS) RWY 13

HIGHMORE MUNI (9D \emptyset)

RNP APCH.		MISSED APPROACH: Climb to 4000 direct ITIXE and hold.	
<p>▼ Baro-VNAV NA. Use Onida altimeter setting; when not received, use Pierre altimeter setting and increase LPV and LNAV/VNAV DA to 2226 and all MDAs 40 feet.</p> <p>▲ NA</p>			
PIR ASOS 119.025	98D AWOS-2 122.9	MINNEAPOLIS CENTER 125.1 269.1	CTAF 122.9



4 NM Holding Pattern		OMCEW		4000 ITIXE	
6000 ← 310°		3400		*LNAV only	
4000 → 130°		WUVAM 2.4 NM to RW13		↑	
GP 3.00°		RW13		*2640	
TCH 40		3.5 NM		2.4 NM	
		2.4 NM		2.4 NM	
CATEGORY	A	B	C	D	
LPV DA	2192-1½	340 (400-1½)		NA	
LNAV/VNAV DA	2192-1½	340 (400-1½)		NA	
LNAV MDA	2260-1	408 (500-1)		NA	
CIRCLING	2460-1 606 (700-1)	2600-1 746 (800-1)		NA	



NC-1, 22 FEB 2024 to 21 MAR 2024

NC-1, 22 FEB 2024 to 21 MAR 2024

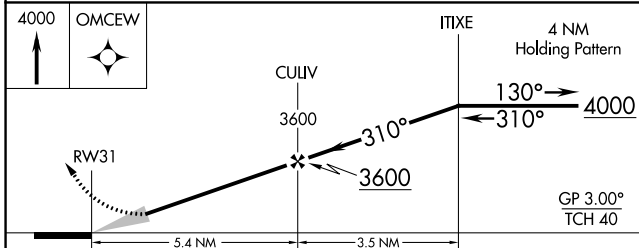
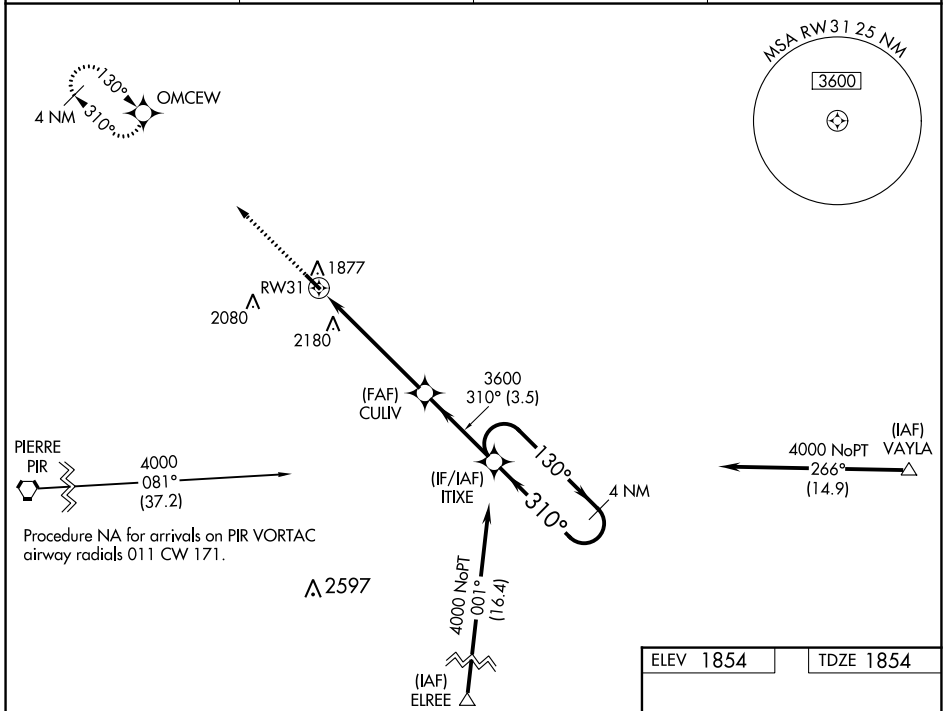
WAAS CH 40437 W31A	APP CRS 310°	Rwy Idg TDZE Apt Elev	3701 1854 1854
---------------------------------	------------------------	-----------------------------	---

RNAV (GPS) RWY 31

HIGHMORE MUNI (9D \emptyset)

V NA Baro-VNAV NA. DME/DME RNP-0.3 NA. Use Pierre altimeter setting; when not received, procedure NA.	MISSED APPROACH: Climb to 4000 direct OMCEW and hold.
--	---

PIR ASOS 119.025	98D AWOS-2 122.9	MINNEAPOLIS CENTER 125.1 269.1	CTAF 122.9
----------------------------	----------------------------	--	----------------------



ELEV 1854	TDZE 1854
-----------	-----------

MIRL Rwy 13-31

CATEGORY	A	B	C	D
LPV DA	2205-1 $\frac{1}{8}$	351 (400-1 $\frac{1}{8}$)		NA
LNAV/VNAV DA	2519-2 $\frac{1}{2}$	665 (700-2 $\frac{1}{2}$)		NA
LNAV MDA	2540-1	686 (700-1)		NA
C CIRCLING	2540-1 686 (700-1)	2600-1 746 (800-1)		NA

NC-1, 22 FEB 2024 to 21 MAR 2024

NC-1, 22 FEB 2024 to 21 MAR 2024