

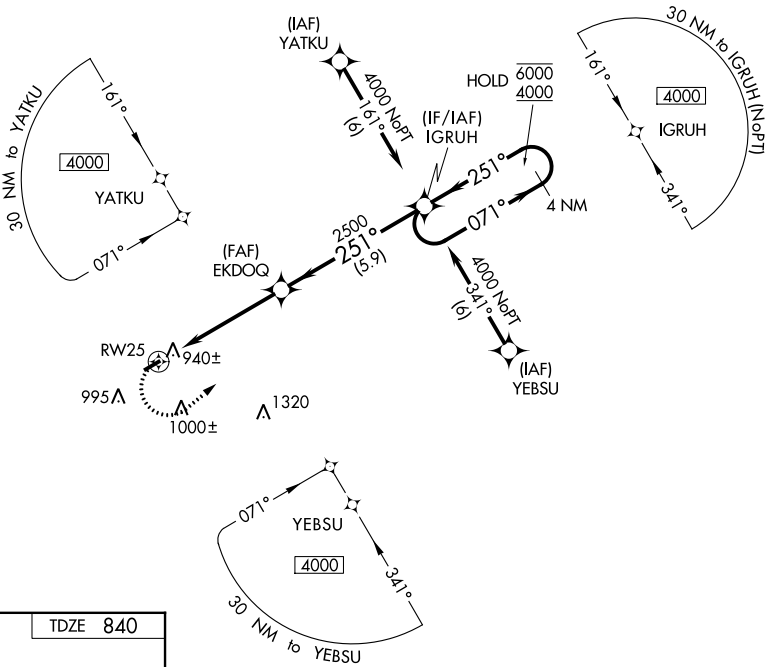
WAAS CH 40233 W25A	APP CRS 251°	Rwy Idg TDZE Apt Elev	3268 840 840
--	------------------------	-----------------------------	---

RNAV (GPS) RWY 25

AKRON/JESSON FIELD (9G3)

RNP APCH.	MISSED APPROACH: Climbing left turn to 4000 direct IGRUH and hold, continue climb-in-hold to 4000.
<p>▼ Rwy 25 helicopter visibility reduction below 1 SM NA.</p> <p>▲ NA Use Buffalo altimeter setting. Procedure NA at night.</p>	

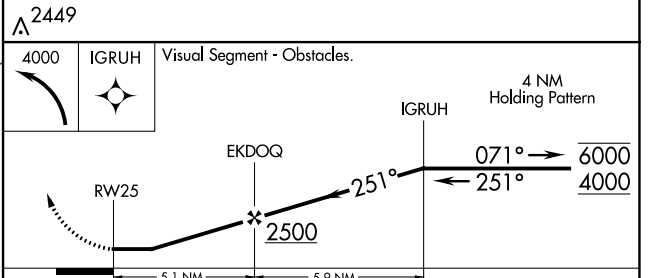
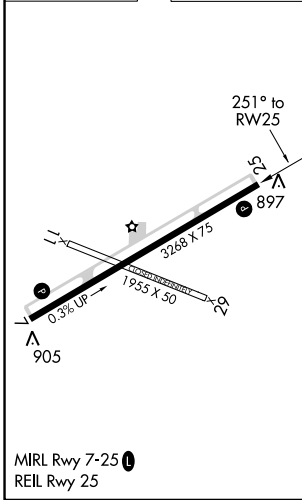
BUF ASOS 135.35	BUFFALO APP CON 126.15 263.125	UNICOM 122.725 (CTAF) 0
---------------------------	--	-----------------------------------



NE-2, 25 FEB 2021 to 25 MAR 2021

NE-2, 25 FEB 2021 to 25 MAR 2021

ELEV 840	TDZE 840
----------	----------



CATEGORY	A	B	C	D
LP MDA	1240-1	400 (400-1)		NA
LNAV MDA	1300-1	460 (500-1)		NA
C CIRCLING	1380-1	540 (600-1)		NA

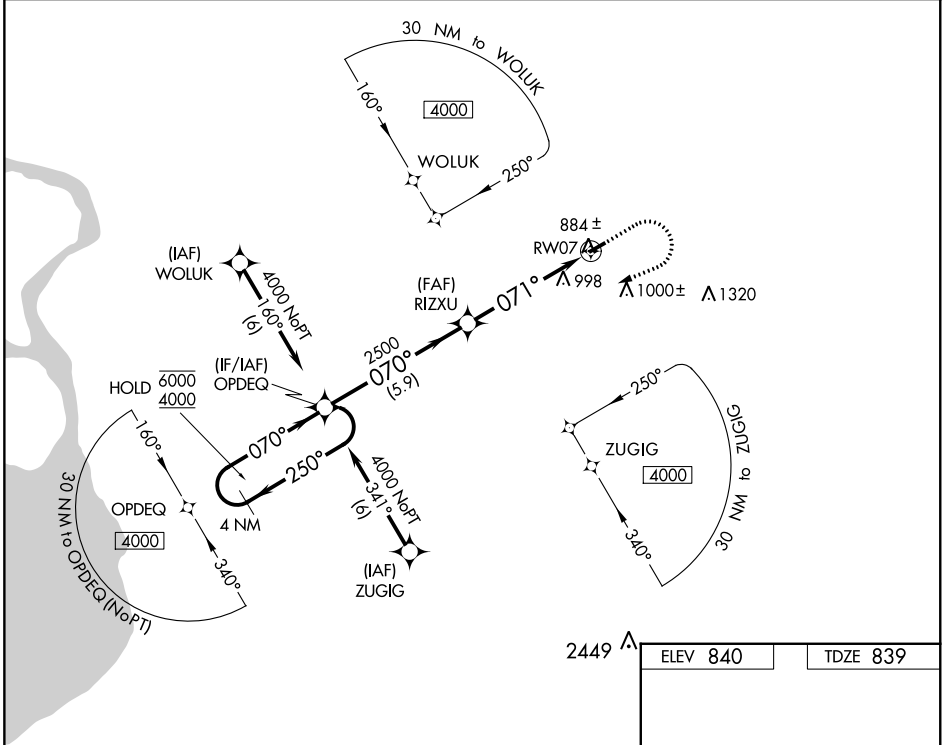
WAAS CH 93633 W07A	APP CRS 071°	Rwy Idg TDZE Apt Elev	3268 839 840
--	------------------------	-----------------------------	---

RNAV (GPS) RWY 7

AKRON/JESSON FIELD (9G3)

RNP APCH.	MISSED APPROACH: Climb to 1300 then climbing right turn to 4000 direct OPDEQ and hold, continue climb-in-hold to 4000.
▼ Procedure NA at night. Use Buffalo altimeter setting.	
▲ NA Rwy 7 helicopter visibility reduction below 1 SM NA.	

BUF ASOS 135.35	BUFFALO APP CON 126.15 263.125	UNICOM 122.725 (CTAF) 0
---------------------------	--	-----------------------------------



NE-2, 25 FEB 2021 to 25 MAR 2021

NE-2, 25 FEB 2021 to 25 MAR 2021

Visual Segment - Obstacles.		1300	4000	OPDEQ
4 NM Holding Pattern		↑	↷	✧
6000 ← 250°	← 070° →			
4000				
		RIZXU		
				RW07
		2500		
		5.9 NM	5.1 NM	
CATEGORY	A	B	C	D
LP MDA	1180-1	341 (400-1)		NA
LNAV MDA	1300-1	461 (500-1)		NA
CIRCLING	1380-1	540 (600-1)		NA

