

WAAS CH 77824 W05A	APP CRS 050°	Rwy Idg TDZE Apt Elev	6011 468 468
--	------------------------	-----------------------------	---

RNAV (GPS) RWY 5

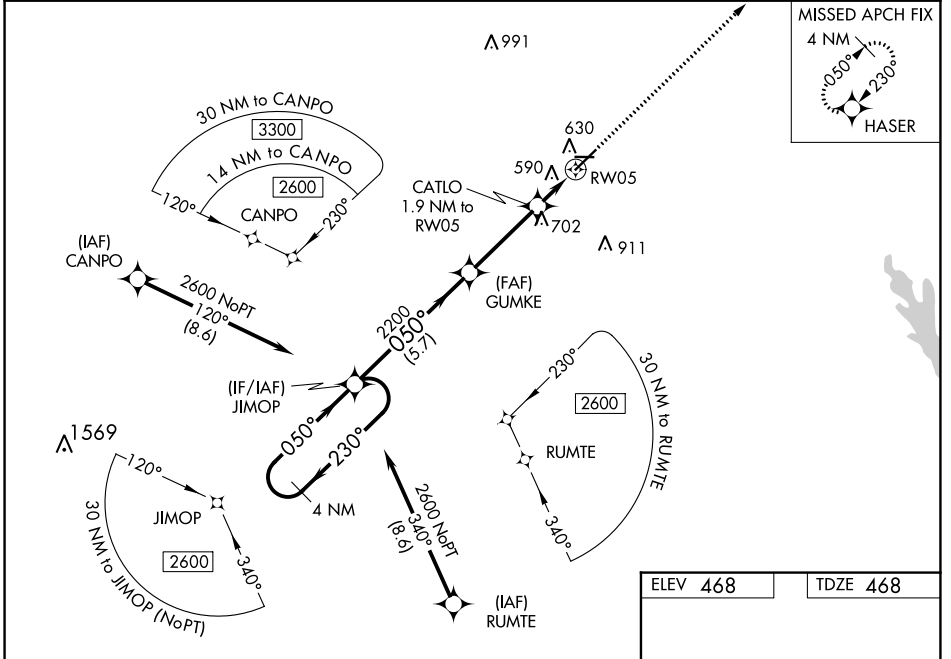
JIMMY CARTER RGNL (ACJ)

RNP APCH.

Baro-VNAV NA when using Columbus altimeter setting. For uncompensated Baro-VNAV systems, LNAV/VNAV NA below -15°C or above 40°C. Rwy 5 helicopter visibility reduction below 3/4 SM NA. When local altimeter setting not received, use Columbus altimeter setting and increase LPV DA to 832 feet and visibility 1/4 SM, LNAV/VNAV DA to 954 feet and visibility 3/8 SM, increase all MDAs 120 feet and LNAV Cats C/D visibility 3/8 SM, and Circling Cat C visibility 1/2 SM, Cat D 1/4 SM. Circling Rwy 10, 28 NA at night.

MISSED APPROACH:
Climb to 2600 direct
HASER and hold.

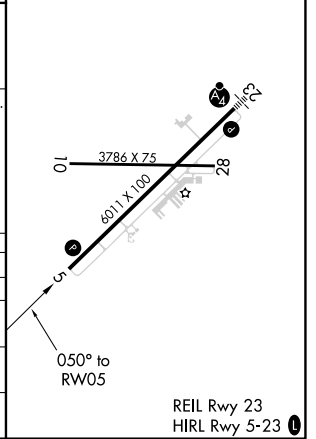
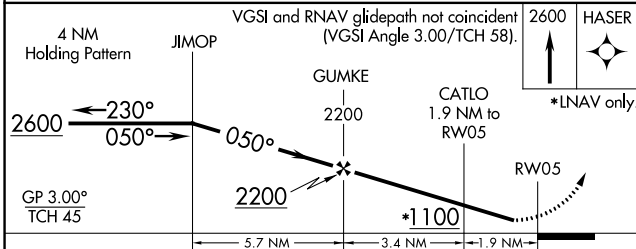
AWOS-3 128.375	ATLANTA APP CON ★ 124.2 323.1	CLNC DEL 119.95	UNICOM 122.8 (CTAF) 0
--------------------------	---	---------------------------	---------------------------------



SE-4, 22 FEB 2024 to 21 MAR 2024

SE-4, 22 FEB 2024 to 21 MAR 2024

ELEV 468	TDZE 468
----------	----------



CATEGORY	A	B	C	D
LPV DA		718-1	250 (300-1)	
LNAV/VNAV DA		840-1	372 (400-1)	
LNAV MDA		840-1	372 (400-1)	
CIRCLING	940-1	472 (500-1)	1020-1½ 552 (600-1½)	1280-2¾ 812 (900-2¾)