

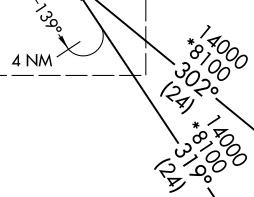
RNAV 1 - DME/DME/IRU or GPS.  
RADAR required.

- DENVER CENTER 133.4 377.175
- SPRINGS APP CON 124.0 257.875
- DENVER APP CON 128.45 251.075
- APA ATIS 120.3
- BJC ATIS 126.25
- CENTENNIAL TOWER 118.9
- METRO TOWER\* 118.6 233.7



See following page for Arrival Routes

DUNNN  
FL220  
FL190



17000  
\*8100  
259°  
(24)



FL190  
\*8100  
260°  
(61)



NOTE: Jet aircraft only.  
NOTE: Expect runway assignment from DENVER TRACON upon initial contact.

17000  
\*8100  
306°  
(45)



NOTE: Chart not to scale.

CAARS TRANSITION (CAARS.DUNNN5)  
FRAAY TRANSITION (FRAAY.DUNNN5)

(CONTINUED ON FOLLOWING PAGE)

DUNNN FIVE ARRIVAL (RNAV) Transition Routes  
(DUNNN.DUNNN5) 14JUL22

(DUNNN.DUNNN5) 22195  
DUNNN FIVE ARRIVAL (RNAV) Transition Routes  
AL-5715 (FAA)  
DENVER, COLORADO

(DUNNN.DUNNN5) 22195

AL-5715 (FAA)

# DUNNN FIVE ARRIVAL (RNAV) Arrival Routes

DENVER, COLORADO

ROCKY MOUNTAIN METRO

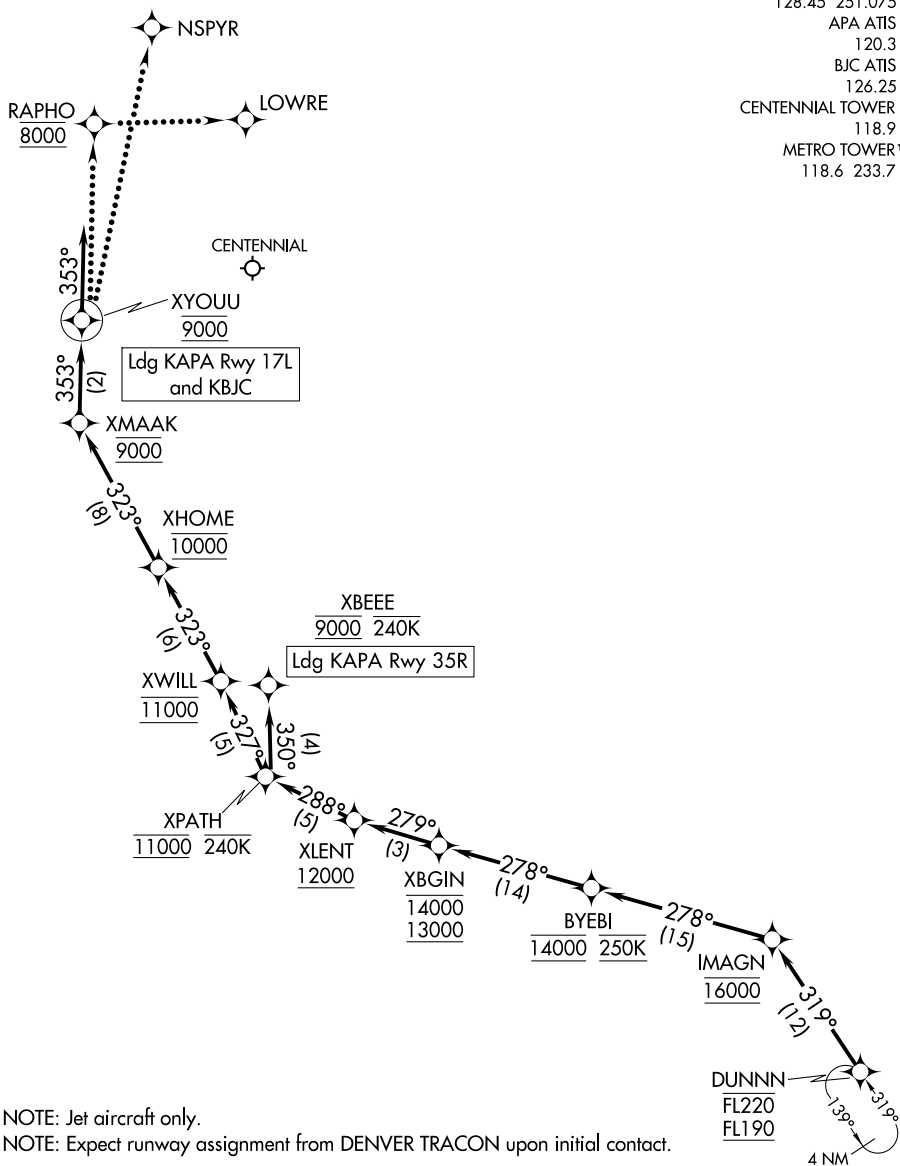
RNAV 1 - DME/DME/IRU or GPS.

RADAR required.

DENVER CENTER  
 133.4 377.175  
 SPRINGS APP CON  
 124.0 257.875  
 DENVER APP CON  
 128.45 251.075  
 APA ATIS  
 120.3  
 BJC ATIS  
 126.25  
 CENTENNIAL TOWER  
 118.9  
 METRO TOWER\*  
 118.6 233.7

SW-1, 22 FEB 2024 to 21 MAR 2024

SW-1, 22 FEB 2024 to 21 MAR 2024



NOTE: Jet aircraft only.  
 NOTE: Expect runway assignment from DENVER TRACON upon initial contact.

NOTE: Chart not to scale.

(NARRATIVE ON FOLLOWING PAGE)

# DUNNN FIVE ARRIVAL (RNAV) Arrival Routes

DENVER, COLORADO

(DUNNN.DUNNN5) 14JUL22