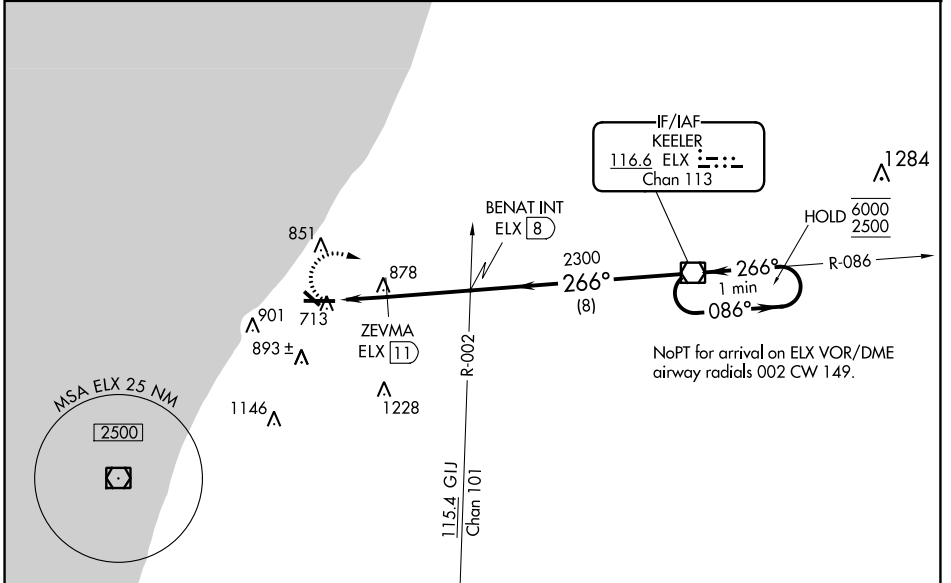


VOR/DME ELX 116.6	APP CRS 266°	Rwy Idg TDZE Apt Elev	6006 649 649
Chan 113			

VOR RWY 28

SOUTHWEST MICHIGAN RGNL (BEH)

DME required.		MALSR MISSED APPROACH: Climbing right turn to 2500 direct ELX VOR/DME and hold.	
Circling Rwy 14, 32 NA at night. For inop ALS, increase S-28 Cats A and B visibility to 1 SM. ZEVMA fix minimums: for inop ALS, increase S-28 Cats A and B visibility to 1 SM and Cats C and D visibility to 1 3/8 SM.			
ASOS 121.55	SOUTH BEND APP CON * 118.55 257.8	SOUTH BEND CLNC DEL 119.7	UNICOM 123.0 (CTAF)



ELEV 649	TDZE 649	2500	ELX																														
REIL Rwys 10, 14 and 32 MIRL Rwy 14-32 HIRL Rwy 10-28	FAF to MAP 4.9 NM	<table border="1"> <thead> <tr> <th>CATEGORY</th> <th>A</th> <th>B</th> <th>C</th> <th>D</th> </tr> </thead> <tbody> <tr> <td>S-28</td> <td>1300-1</td> <td>651 (700-1)</td> <td>1300-1 3/8</td> <td>651 (700-1 3/8)</td> </tr> <tr> <td> CIRCLING</td> <td>1300-1</td> <td>651 (700-1)</td> <td>1300-1 3/4</td> <td>1340-2 1/4 691 (700-2 1/4)</td> </tr> <tr> <th colspan="5">ZEVMA FIX MINIMUMS</th> </tr> <tr> <td>S-28</td> <td>1140-3/4</td> <td>491 (500-3/4)</td> <td>1140-1</td> <td>491 (500-1)</td> </tr> <tr> <td> CIRCLING</td> <td>1140-1</td> <td>511 (600-1)</td> <td>1300-1 3/4</td> <td>1340-2 1/4 691 (700-2 1/4)</td> </tr> </tbody> </table>		CATEGORY	A	B	C	D	S-28	1300-1	651 (700-1)	1300-1 3/8	651 (700-1 3/8)	CIRCLING	1300-1	651 (700-1)	1300-1 3/4	1340-2 1/4 691 (700-2 1/4)	ZEVMA FIX MINIMUMS					S-28	1140-3/4	491 (500-3/4)	1140-1	491 (500-1)	CIRCLING	1140-1	511 (600-1)	1300-1 3/4	1340-2 1/4 691 (700-2 1/4)
CATEGORY	A	B	C	D																													
S-28	1300-1	651 (700-1)	1300-1 3/8	651 (700-1 3/8)																													
CIRCLING	1300-1	651 (700-1)	1300-1 3/4	1340-2 1/4 691 (700-2 1/4)																													
ZEVMA FIX MINIMUMS																																	
S-28	1140-3/4	491 (500-3/4)	1140-1	491 (500-1)																													
CIRCLING	1140-1	511 (600-1)	1300-1 3/4	1340-2 1/4 691 (700-2 1/4)																													
Knots: 60 90 120 150 180 Min:Sec: 4:54 3:16 2:27 1:58 1:38																																	

EC-1, 22 FEB 2024 to 21 MAR 2024

EC-1, 22 FEB 2024 to 21 MAR 2024