


WAAS CH 73005 W12A	APP CRS 126°	Rwy Idg 8279 TDZE 3963 Apt Elev 3967
--	------------------------	---

RNAV (GPS) RWY 12

WESTERN NEBRASKA RGNL/WILLIAM B HEILIG FLD (B/F/F)

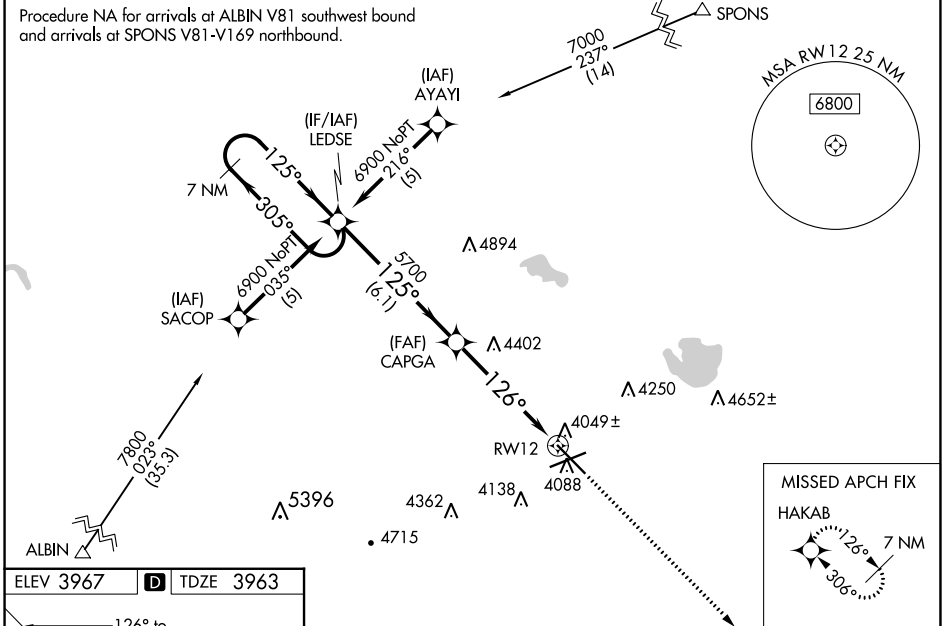
⚠ When local altimeter setting not received, use Alliance altimeter setting and increase all DAs 91 feet and all MDAs 100 feet; increase LPV, LNAV/VNAV, LNAV Cat A/B and Circling Cat B visibilities ¼ mile; increase LNAV and Circling Cat C/D visibilities ½ mile. For inoperative MALSR, when using Alliance altimeter setting, increase LPV all Cats visibility to 1¼, and LNAV Cat A visibility to 1. For uncompensated Baro-VNAV systems, LNAV/VNAV NA below -22°C (-7°F) or above 41°C (105°F). Baro-VNAV NA when using Alliance altimeter setting. VDP NA when using Alliance altimeter setting. DME/DME RNP-0.3 NA.

MALSR

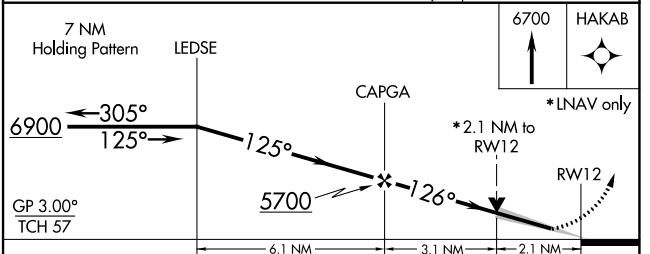


MISSED APPROACH:
Climb to 6700 direct HAKAB and hold.

ASOS 121.025	DENVER CENTER 127.95 338.2	UNICOM 123.0 (CTAF) 0
------------------------	--------------------------------------	---------------------------------



ELEV 3967	D	TDZE 3963
-----------	----------	-----------



	A	B	C	D
LPV DA	4213-½ 250 (300-½)			
LNAV/VNAV DA	4340-¾ 377 (400-¾)			
LNAV MDA	4700-½ 737 (800-½)	4700-1½ 737 (800-1½)	4700-1¾ 737 (800-1¾)	4700-1¾ 737 (800-1¾)
C CIRCLING	4700-1 733 (800-1)	4700-2 733 (800-2)	4740-2½ 773 (800-2½)	4740-2½ 773 (800-2½)

HIRL Rwy 12-30 **0**
MIRL Rwy 5-23 **0**

RNAV (GPS) RWY 12

NC-2, 22 FEB 2024 to 21 MAR 2024

NC-2, 22 FEB 2024 to 21 MAR 2024