

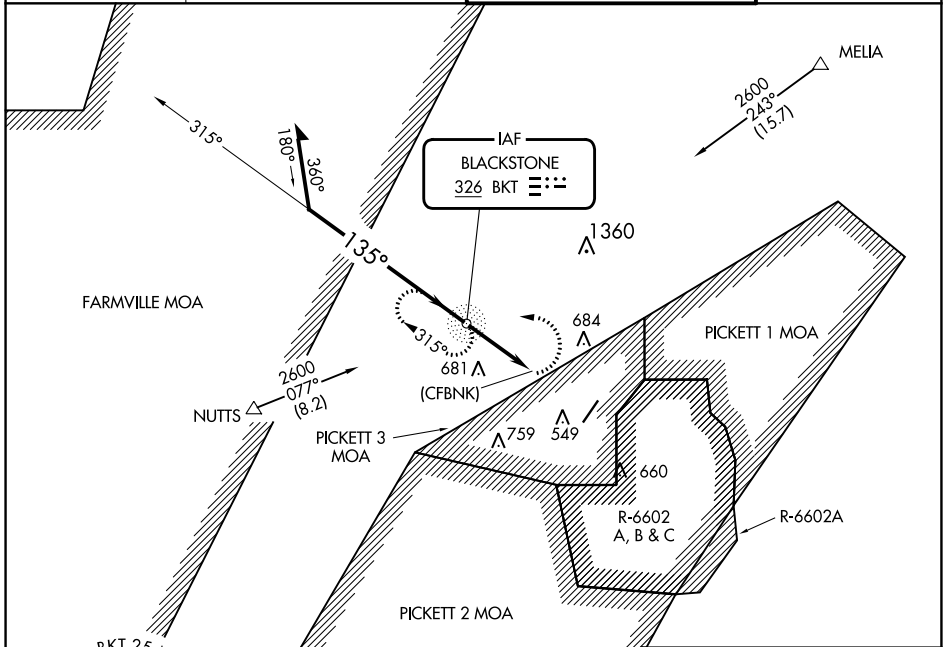
NDB BKT 326	APP CRS 135°	Rwy Idg TDZE Apt Elev	N/A N/A 437
-----------------------	------------------------	-----------------------------	--

NDB-A

ALLEN C PERKINSON BLACKSTONE AAF (BKT)

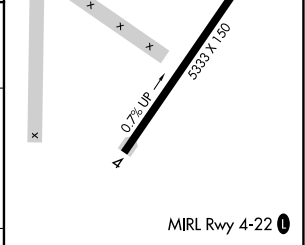
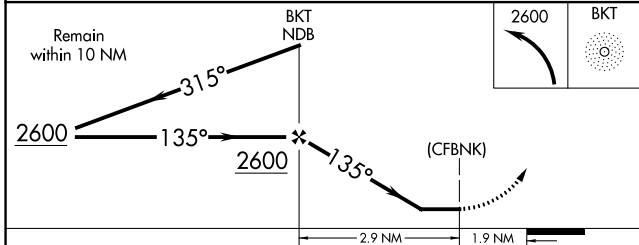
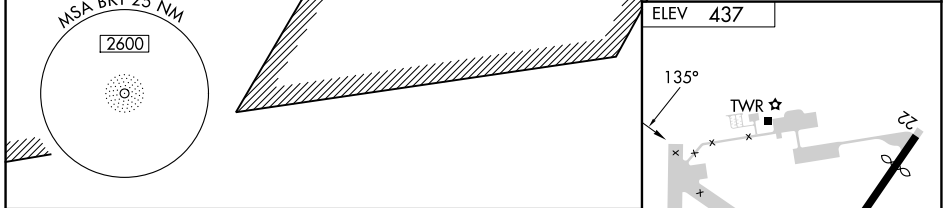
▽ ▲ NA	Use South Hill altimeter setting. Circling NA east of Rwy 4-22.	MISSED APPROACH: Climbing left turn 2600 direct BKT NDB and hold. Continue climb-in-hold to 2600.
-------------------------	--	---

ASOS 119.225	WASHINGTON CENTER 118.75 377.1	BLACKSTONE TOWER★ 134.7 (CTAF) 292.7	GND CON 127.625
------------------------	--	--	---------------------------



NE-3, 22 FEB 2024 to 21 MAR 2024

NE-3, 22 FEB 2024 to 21 MAR 2024



C CIRCLING	A	B	C	D	FAF to MAP 2.9 NM					
	1040-2¼	603 (700-2¼)		NA	Knots	60	90	120	150	180
					Min:Sec	2:54	1:56	1:27	1:10	0:58

NDB-A