

WAAS CH 78102 W10A	APP CRS 102°	Rwy Idg 10000 TDZE 2844 Apt Elev 2872
--	------------------------	--

RNAV (GPS) Y RWY 10L

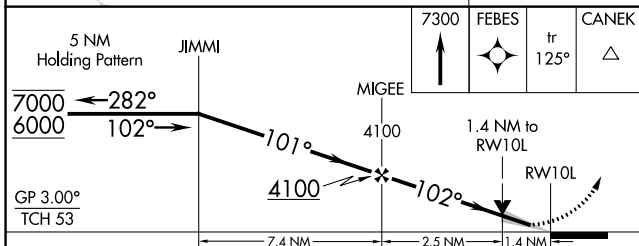
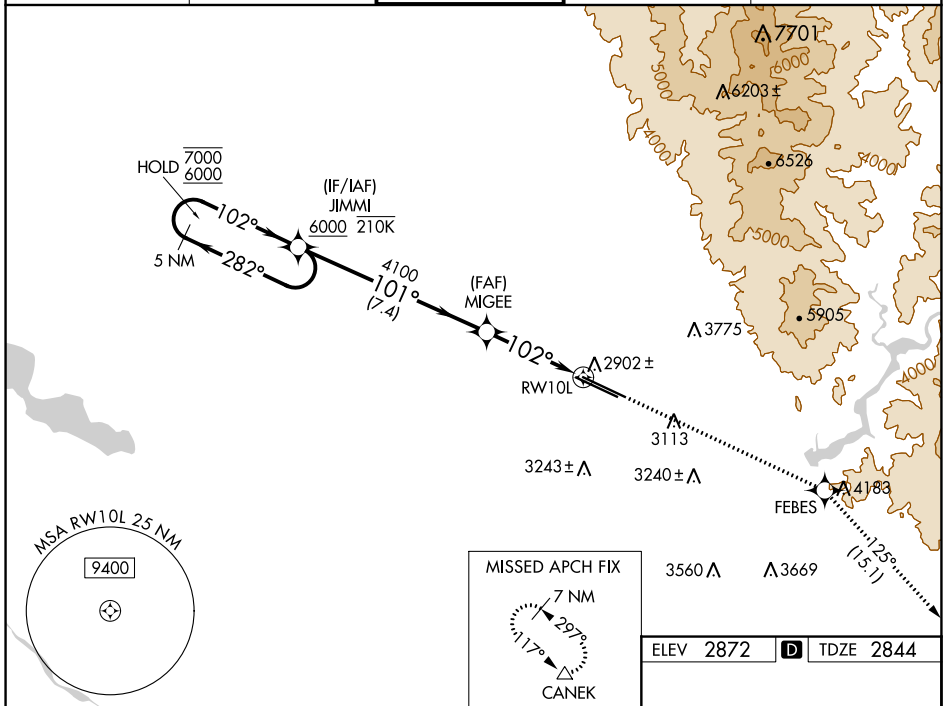
BOISE AIR TRML/GOWEN FLD (BOI)

RADAR required for procedure entry. RNP APCH - GPS.

MISSED APPROACH: Climb to 7300 direct FEBES then on track 125° to CANEK and hold.

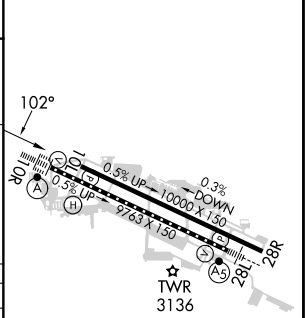
⚠ Circling NA north of Rwy 10L-28R. For uncompensated Baro-VNAV systems, LNAV/VNAV NA below -14°C or above 54°C.

D-ATIS 123.9 290.4	BIG SKY APP CON 119.6 269.4	BOISE TOWER 118.1 257.8	GND CON 121.7 348.6	CLNC DEL 125.9 323.2
------------------------------	---------------------------------------	-----------------------------------	-------------------------------	--------------------------------



ELEV 2872	D TDZE 2844
-----------	--------------------

CATEGORY	A	B	C	D
LPV DA	3044-3/4 200 (200-3/4)			
LNAV/VNAV DA	3197-1 353 (400-1)			
LNAV MDA	3320-1 476 (500-1)		3320-1 3/8 476 (500-1 3/8)	
C CIRCLING	3440-1 568 (600-1)		3640-2 1/4 768 (800-2 1/4) 3820-3 948 (1000-3)	



REIL Rwy 10L
TDZ/CL Rwys 10R and 28L
HIRL Rwys 10L-28R and 10R-28L

NW-1, 22 FEB 2024 to 21 MAR 2024

NW-1, 22 FEB 2024 to 21 MAR 2024