

# MIIDY TWO ARRIVAL (RNAV)

BALTIMORE, MARYLAND

NE-3, 22 FEB 2024 to 21 MAR 2024

**ARRIVAL ROUTE DESCRIPTION**

**LAFIN TRANSITION (LAFIN.MIIDY2)**

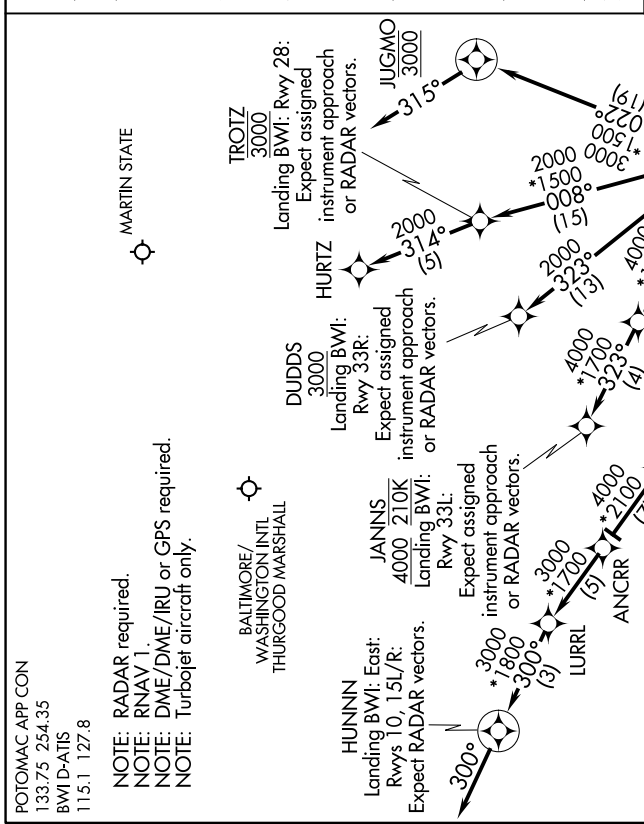
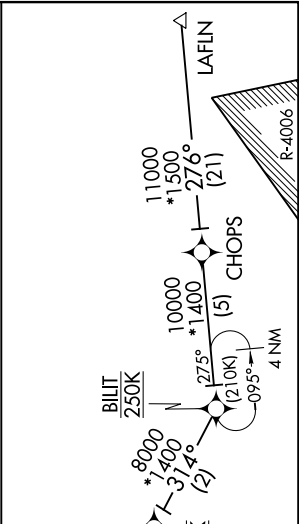
**LANDING KBWI RWYS 10, 15L/R:** From MIIDY on track 302° to cross KAPTIN at or below 5000, then on track 311° to cross NAVY at 4000, then on track 311° to ANCR, then on track 311° to LURRL, then on track 300° to HUNNIN, then on track 300°. Expect RADAR vectors to final approach course.

**LANDING BWI RWY 28:** From MIIDY on track 008° to cross TROTZ at 3000, then on track 314° to HURTZ. Expect assigned instrument approach or RADAR vectors.

**LANDING BWI RWY 33L:** From MIIDY on track 316° to cross SNUGI at or below 5000, then on track 323° to cross JANNS at or above 4000 and at 210K. Expect assigned instrument approach or RADAR vectors.

**LANDING BWI RWY 33R:** From MIIDY on track 323° to cross DUDDS at or above 3000. Expect assigned instrument approach or RADAR vectors.

**LANDING MTN:** From MIIDY on track 022° to cross JUGMO at 3000, then on heading 315°. Expect RADAR vectors to final approach course.



POTOMAC APP CON  
133.75 254.35  
BWI D-ATIS  
115.1 127.8

NOTE: RADAR required.  
NOTE: RNAV 1.  
NOTE: DME/DME/IRU or GPS required.  
NOTE: Turbojet aircraft only.

MARTIN STATE

BALTIMORE/  
WASHINGTON INTL.  
THURGOOD MARSHALL

HUNNIN  
Landing BWI: East:  
Rwys 10, 15L/R:  
Expect RADAR vectors.

JANNS  
4000 210K  
Landing BWI:  
Rwy 33L:  
Expect assigned  
instrument approach  
or RADAR vectors.

DUDDS  
3000  
Landing BWI:  
Rwy 33R:  
Expect assigned  
instrument approach  
or RADAR vectors.

TROTZ  
3000  
Landing BWI: Rwy 28:  
Expect assigned  
instrument approach  
or RADAR vectors.

HURTZ  
Expect assigned  
instrument approach  
or RADAR vectors.

JUGMO  
3000  
Expect assigned  
instrument approach  
or RADAR vectors.

SNUGI  
5000  
Expect assigned  
instrument approach  
or RADAR vectors.

KAPTIN  
5000  
Expect assigned  
instrument approach  
or RADAR vectors.

NAVY  
4000  
Expect assigned  
instrument approach  
or RADAR vectors.

CHOPS  
10000  
Expect assigned  
instrument approach  
or RADAR vectors.



NOTE: Chart not to scale.

NE-3, 22 FEB 2024 to 21 MAR 2024

# MIIDY TWO ARRIVAL (RNAV)

BALTIMORE, MARYLAND