

WAAS CH <b>70420</b> <b>W01A</b>	APP CRS <b>009°</b>	Rwy Idg TDZE Apt Elev	<b>7007</b> <b>1209</b> <b>1226</b>
--	------------------------	-----------------------------	---

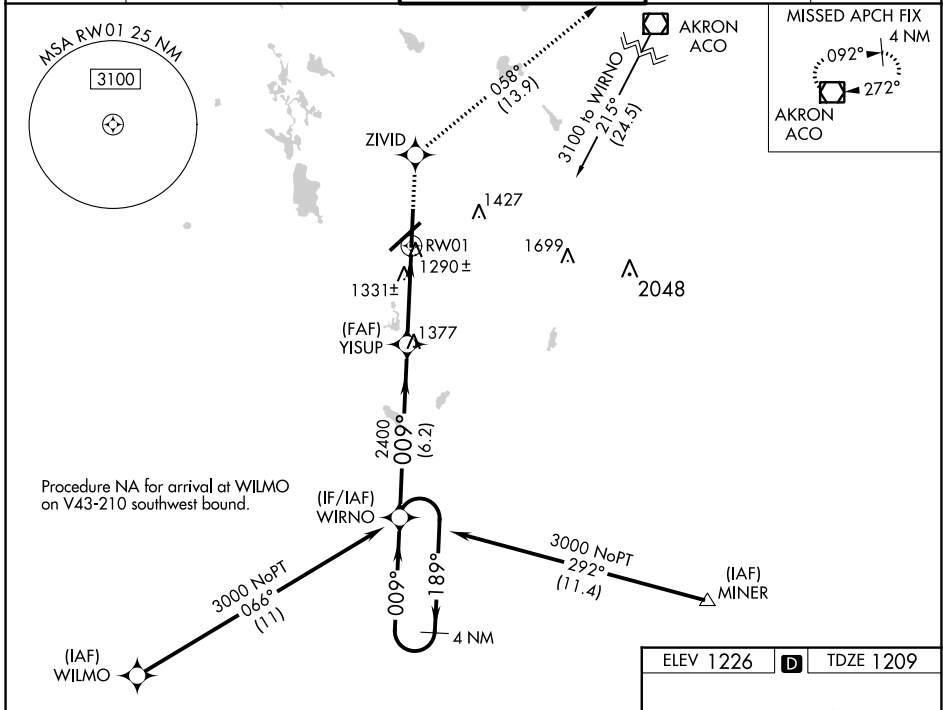
# RNAV (GPS) RWY 1

## AKRON-CANTON RGNL (CAK)

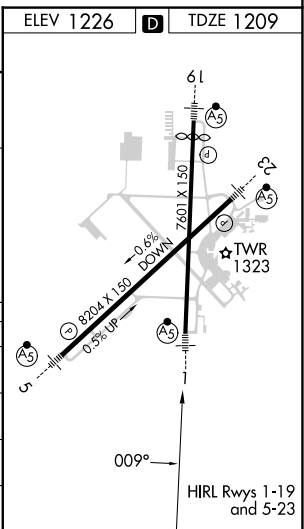
**▼** For uncompensated Baro-VNAV systems, LNAV/VNAV NA below -17°C (2°F) or above 45°C (113°F). DME/DME RNP-0.3 NA.  
 \*\* RVR 1800 authorized with use of FD or AP or HUD to DA.

**MALSR** MISSED APPROACH: Climb to 3000 direct ZIVID and on track 058° to ACO VOR/DME and hold.

ATIS <b>121.05</b>	CLEVELAND APP CON * <b>125.5 269.25</b>	AKRON-CANTON TOWER <b>134.75 279.575</b>	GND CON <b>121.7 348.6</b>	CLNC DEL <b>132.05</b>
-----------------------	--	---	-------------------------------	---------------------------



4 NM Holding Pattern	WIRNO			
	3000 ← 189°	← 009°	009°	009°
GP 3.00° TCH 53		2400	2400	2400
	6.2 NM	2.4 NM	1.1	
CATEGORY	A	B	C	D
LPV DA**		1409/24	200 (200-½)	
LNAV/VNAV DA		1542/40	333 (400-¾)	
LNAV MDA	1600/24	391 (400-½)		1600/50 391 (400-1)
CIRCLING	1760-1	534 (600-1)	1780-1½ 554 (600-1½)	1800-2 574 (600-2)



EC-2, 22 FEB 2024 to 21 MAR 2024

EC-2, 22 FEB 2024 to 21 MAR 2024