

WAAS CH 93533 W14A	APP CRS 133°	Rwy Idg TDZE Apt Elev	6500 1095 1095
----------------------------------------	------------------------	-----------------------------	-------------------------------------------

RNAV (GPS) RWY 14

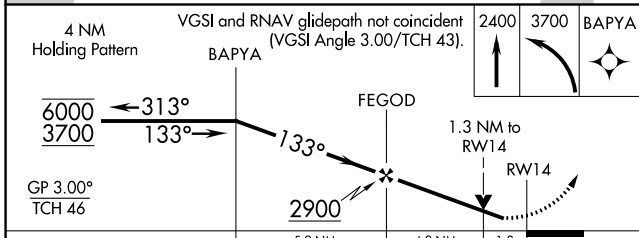
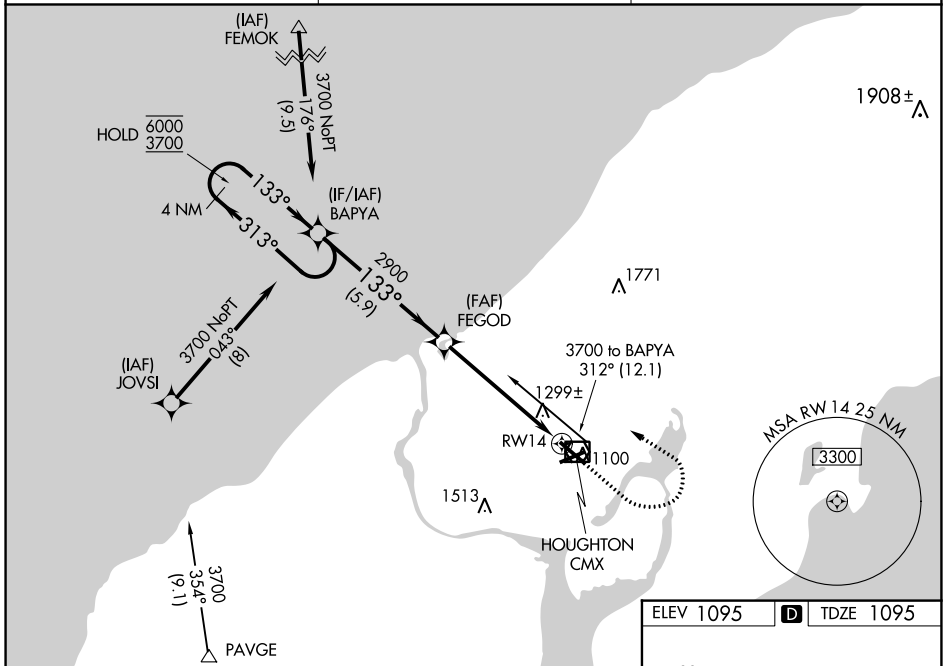
HOUGHTON COUNTY MEML (CMX)

RNP APCH - GPS.

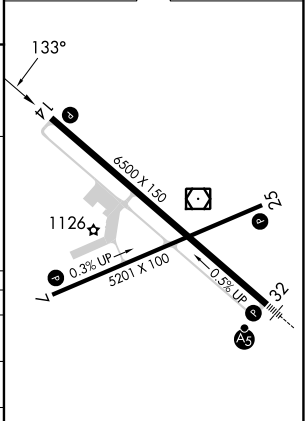
⚠ Rwy 14 helicopter visibility reduction below ¾ SM NA.
For uncompensated Baro-VNAV systems,
LNAV/VNAV NA below -21°C or above 54°C.

MISSED APPROACH: Climb to 2400 then climbing left turn to 3700 direct BAPYA and hold.

ASOS 125,675	MINNEAPOLIS CENTER 133.55 379.1	UNICOM 122.7 (CTAF)
------------------------	-------------------------------------------	-------------------------------



ELEV 1095	D TDZE 1095
-----------	--------------------



CATEGORY	A	B	C	D
LPV DA		1414-7/8	319 (400-7/8)	
LNAV/VNAV DA		1626-1 1/2	531 (600-1 1/2)	
LNAV MDA	1560-1	465 (500-1)	1560-1 3/8	465 (500-1 3/8)
C CIRCLING	1620-1 525 (600-1)	1660-1 565 (600-1)	1700-1 3/4 605 (700-1 3/4)	1820-2 1/4 725 (800-2 1/4)

MIRL Rwy 7-25
 REIL Rws 7, 14 and 25
 HIRL Rwy 14-32

EC-1, 22 FEB 2024 to 21 MAR 2024

EC-1, 22 FEB 2024 to 21 MAR 2024