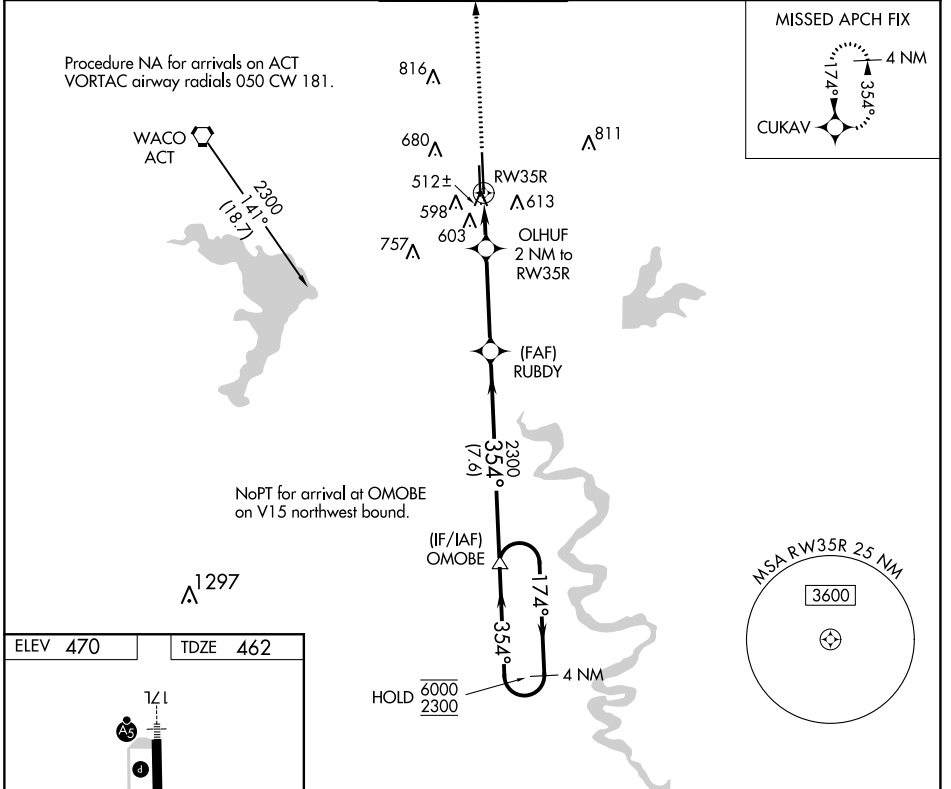


WAAS CH 82731 W35A	APP CRS 354°	Rwy ldg TDZE Apt Elev	8600 462 470
--	------------------------	-----------------------------	---

RNAV (GPS) RWY 35R

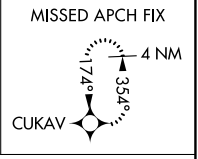
TSTC WACO (CNW)

RNP APCH.		MISSED APPROACH: Climb to 2300 direct CUKAV and hold.	
AWOS-3PT 134.225	WACO APP CON ★ 127.65 227.125	TSTC TOWER ★ 124.0(CTAF) 255.7	GND CON 121.70
			UNICOM 122.95

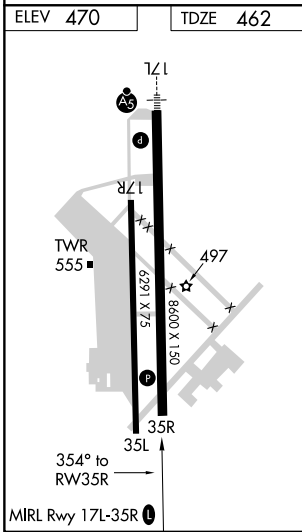
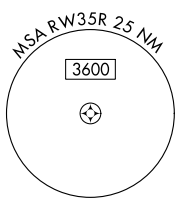


Procedure NA for arrivals on ACT
VORTAC airway radials 050 CW 181.

WACO ACT



NoPT for arrival at OMOBE
on V15 northwest bound.



2300	CUKAV	RUBDY	OMOBE	4 NM Holding Pattern
↑	✦	OLHUF 2 NM to RWY 35R		
0.9 NM to RWY 35R	3.00° TCH 41	2300	354°	174° → 6000 ← 354° 2300
0.9	1.1	3.7 NM	7.6 NM	
CATEGORY	A	B	C	D
LP MDA	780-1 318 (400-1)			
LNAV MDA	860-1	398 (400-1)	860-1½	398 (400-1½)

SC-3, 22 FEB 2024 to 21 MAR 2024

SC-3, 22 FEB 2024 to 21 MAR 2024