

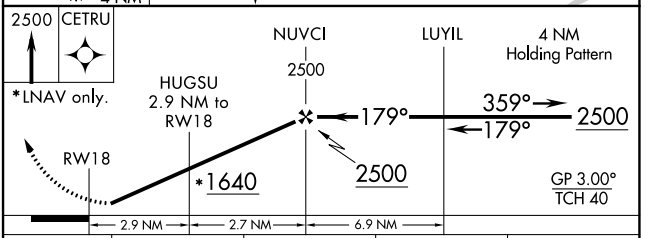
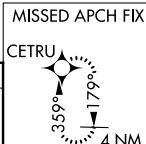
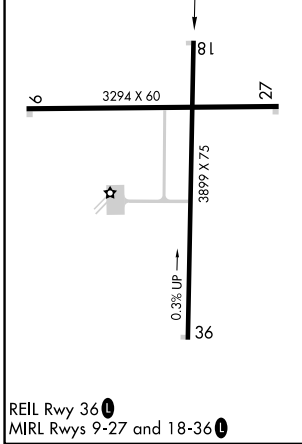
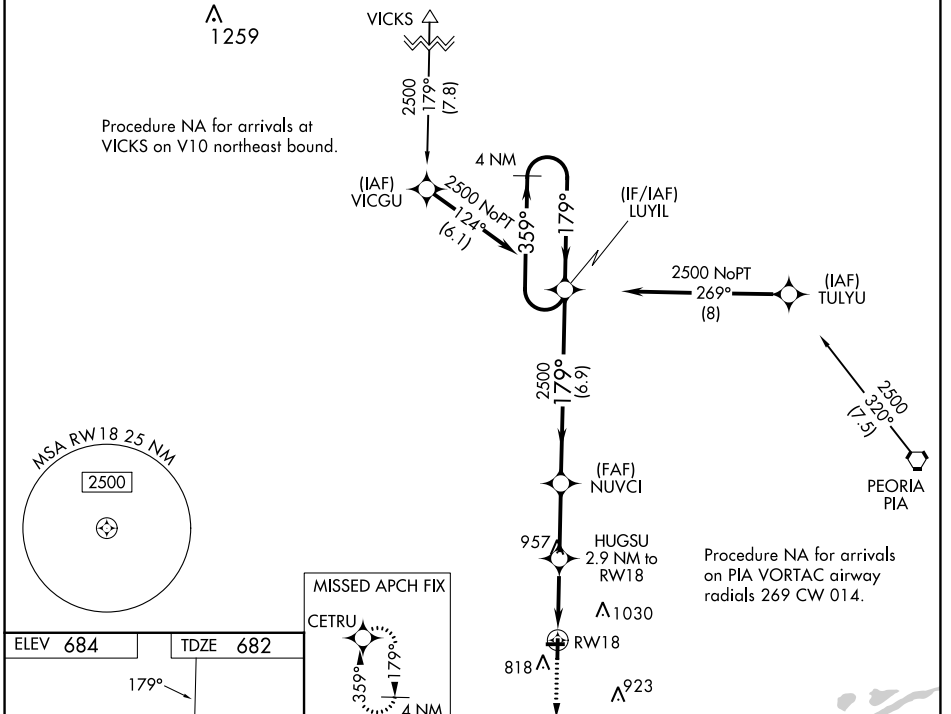
WAAS CH 93931 W18A	APP CRS 179°	Rwy Idg TDZE 682 Apt Elev 684	3899
--	------------------------	---	-------------

RNAV (GPS) RWY 18

INGERSOLL (CTK)

RNP APCH-GPS.	Baro VNAV NA. For uncompensated Baro-VNAV systems, LNAV/VNAV NA below -16°C or above 54°C.	MISSED APPROACH: Climb to 2500 direct CETRU and hold.
---------------	--	--

PIA ASOS 126.1 282.2	SAINT LOUIS APP CON 125.8 269.2	UNICOM 122.8 (CTAF) 0
--------------------------------	---	---------------------------------



CATEGORY	A	B	C	D
LPV DA	995-1	313 (400-1)		NA
LNAV/VNAV DA	1128-1 $\frac{3}{8}$	446 (500-1 $\frac{3}{8}$)		NA
LNAV MDA	1280-1	598 (600-1)	1280-1 $\frac{3}{4}$ 598 (600-1 $\frac{3}{4}$)	NA
CIRCLING	1280-1 596 (600-1)	1440-1 756 (800-1)	1440-2 $\frac{1}{4}$ 756 (800-2 $\frac{1}{4}$)	NA

EC-3, 22 FEB 2024 to 21 MAR 2024

EC-3, 22 FEB 2024 to 21 MAR 2024