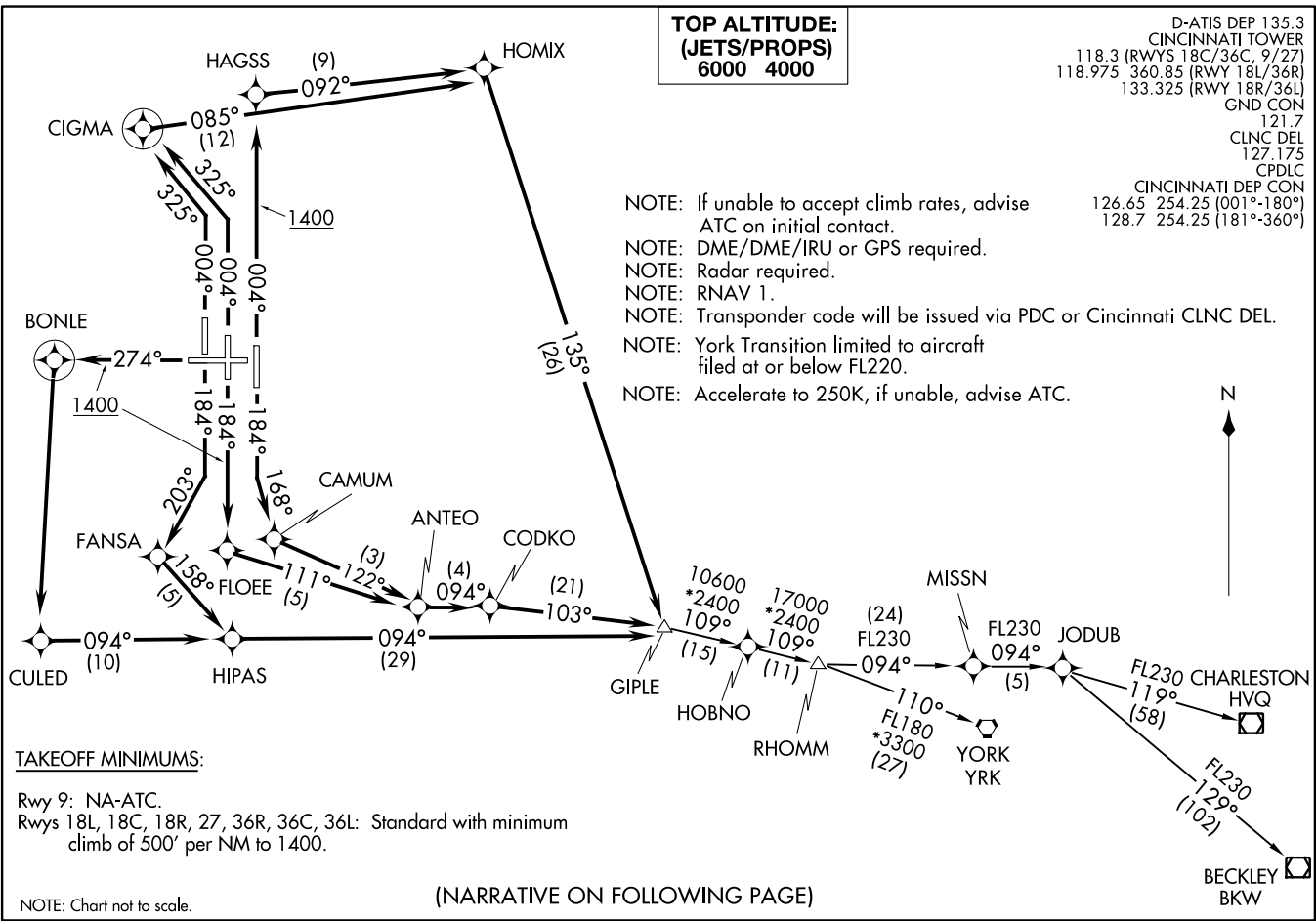


GIPLE SIX DEPARTURE (RNAV) (GIPLE6.GIPLE) 29MAR18
CINCINNATI/NORTHERN KENTUCKY INTL (CVG) COVINGTON, KENTUCKY



TOP ALTITUDE:
(JETS/PROPS)
6000 4000

D-ATIS DEP 135.3
 CINCINNATI TOWER
 118.3 (RWYS 18C/36C, 9/27)
 118.975 360.85 (RWY 18L/36R)
 133.325 (RWY 18R/36L)
 GND CON
 121.7
 CLNC DEL
 127.175
 CPDLC
 CINCINNATI DEP CON
 126.65 254.25 (001°-180°)
 128.7 254.25 (181°-360°)

- NOTE: If unable to accept climb rates, advise ATC on initial contact.
- NOTE: DME/DME/IRU or GPS required.
- NOTE: Radar required.
- NOTE: RNAV 1.
- NOTE: Transponder code will be issued via PDC or Cincinnati CLNC DEL.
- NOTE: York Transition limited to aircraft filed at or below FL220.
- NOTE: Accelerate to 250K, if unable, advise ATC.

TAKEOFF MINIMUMS:

Rwy 9: NA-ATC.
 Rws 18L, 18C, 18R, 27, 36R, 36C, 36L: Standard with minimum climb of 500' per NM to 1400.

NOTE: Chart not to scale.

(NARRATIVE ON FOLLOWING PAGE)

(GIPLE6.GIPLE) 22027
CINCINNATI/NORTHERN KENTUCKY INTL (CVG) AL-655 (FAA) COVINGTON, KENTUCKY



DEPARTURE ROUTE DESCRIPTION

TAKEOFF RUNWAY 18L: Climb heading 184° to intercept course 168° to CAMUM, then on depicted route to GIPLE, thence....

TAKEOFF RUNWAY 18C: Climb heading 184° to 1400, then direct FLOEE, then on depicted route to GIPLE, thence....

TAKEOFF RUNWAY 18R: Climb heading 184° to intercept course 203° to FANSA, then on depicted route to GIPLE, thence....

TAKEOFF RUNWAY 27: Climb heading 274° to 1400, then direct BONLE, then left turn direct CULED, then left turn on track 094° to HIPAS, then on depicted route to GIPLE, thence....

TAKEOFF RUNWAY 36R: Climb heading 004° to 1400, then direct HAGSS, then on depicted route to GIPLE, thence....

TAKEOFF RUNWAY 36C: Climb heading 004° to intercept course 325° to CIGMA, then right turn direct HOMIX, then on depicted route to GIPLE, thence....

TAKEOFF RUNWAY 36L: Climb heading 004° to intercept course 325° to CIGMA, then right turn direct HOMIX, then on depicted route to GIPLE, thence....

....turbojet aircraft maintain 6000, all other aircraft maintain 4000. Expect clearance to filed altitude within 10 minutes after departure.

BECKLEY TRANSITION (GIPLE6.BKW):

CHARLESTON TRANSITION (GIPLE6.HVQ):

JODUB TRANSITION (GIPLE6.JODUB):

YORK TRANSITION (GIPLE6.YRK):

SE-1, 22 FEB 2024 to 21 MAR 2024

SE-1, 22 FEB 2024 to 21 MAR 2024