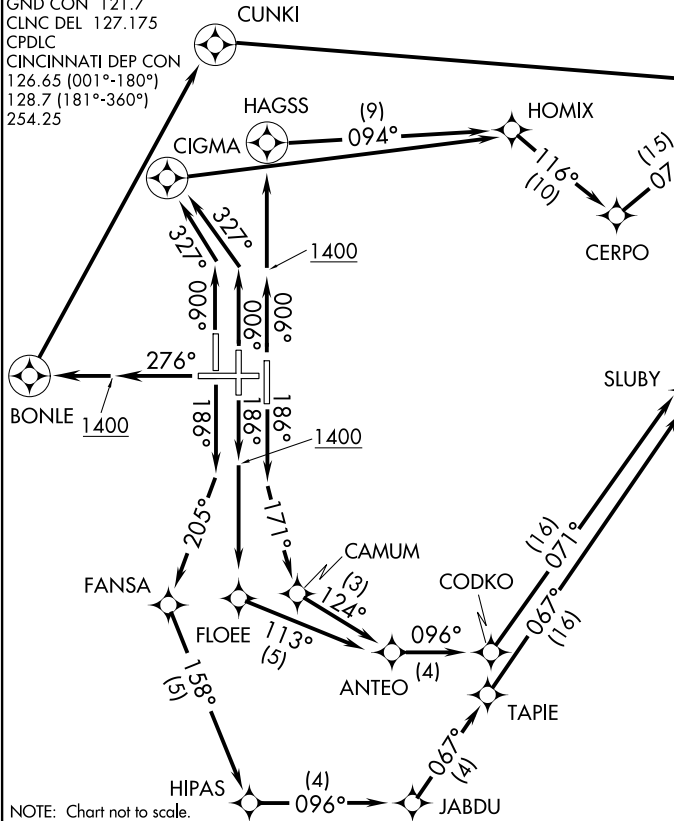


**TOP ALTITUDE:
(JETS) 6000/(PROPS) 4000**

D-ATIS DEP 135.3
CINCINNATI TOWER
118.3 (RWYS 18C/36C, 9/27)
118.975 360.85 (RWY 18L/36R)
133.325 (RWY 18R/36L)
GND CON 121.7
CLNC DEL 127.175
CPDLC
CINCINNATI DEP CON
126.65 (001°-180°)
128.7 (181°-360°)
254.25

ROCKT1.ROCKT) 22027
ROCKT1.ROCKT) 15AUG19

CINCINNATI/NORTHERN KENTUCKY INTL (CVG)
COVINGTON, KENTUCKY



TAKEOFF MINIMUMS:

Rwy 9: NA-ATC.
Rwys 18L/C/R, 27, 36L/C/R:
Standard with minimum climb of 500' per NM to 1400.

- NOTE: If unable to accept climb rates, advise ATC on initial contact.
- NOTE: DME/DME/IRU or GPS required.
- NOTE: RADAR required.
- NOTE: RNAV 1.
- NOTE: Transponder code will be issued via PDC or Cincinnati CLNC DEL.
- NOTE: Departure procedure limited to aircraft with the following destination airports and departure times as indicated:
Anytime - ABE, AGC, ALB, AVP, BDL, BKL, BOS, BWI, CAK, CGF, CLE, LNN, LPR, MDT, MHT, PHL, PIT, PNE, PVD, PWM, SWF, TTN, UNV, and overseas flights.
LGA between 1000-1800 UTC.
- NOTE: ARRAY TRANSITION (ROCKT1.ARRAY) limited to aircraft landing: BKL, CAK, CLE, CGF, LNN, LPR.
- NOTE: Accelerate to 250K, if unable advise ATC.

(NARRATIVE ON FOLLOWING PAGE)

ROCKT1.ROCKT) 22027
ROCKT1.ROCKT) 15AUG19

CINCINNATI/NORTHERN KENTUCKY INTL (CVG)
COVINGTON, KENTUCKY

NOTE: Chart not to scale.



DEPARTURE ROUTE DESCRIPTION

TAKEOFF RUNWAY 18L: Climb heading 186° to intercept course 171° to CAMUM, then on depicted route to WADAL, thence. . . .

TAKEOFF RUNWAY 18C: Climb heading 186° to 1400, then direct FLOEE, then on depicted route to WADAL, thence. . . .

TAKEOFF RUNWAY 18R: Climb heading 186° to intercept course 205° to FANSA, then on depicted route to WADAL, thence. . . .

TAKEOFF RUNWAY 27: Climb heading 276° to 1400, then direct BONLE, then right turn direct CUNKI, then right turn direct WADAL, thence. . . .

TAKEOFF RUNWAY 36R: Climb heading 006° to 1400, then direct HAGSS, then on depicted route to WADAL, thence. . . .

TAKEOFF RUNWAY 36L/C: Climb heading 006° to intercept course 327° to CIGMA, then right turn direct HOMIX, then on depicted route to WADAL, thence. . . .

. . . . on depicted route to ROCKT. Turbojet aircraft maintain 6000, all other aircraft maintain 4000. Expect clearance to filed altitude within 10 minutes after departure.

AHTIY TRANSITION (ROCKT1.AHTIY)

ARRAY TRANSITION (ROCKT1.ARRAY)

SE-1, 22 FEB 2024 to 21 MAR 2024

SE-1, 22 FEB 2024 to 21 MAR 2024