

WAAS CH <b>86829</b> <b>W21A</b>	APP CRS <b>210°</b>	Rwy Idg TDZE Apt Elev	<b>5204</b> <b>708</b> <b>708</b>
--	------------------------	-----------------------------	---

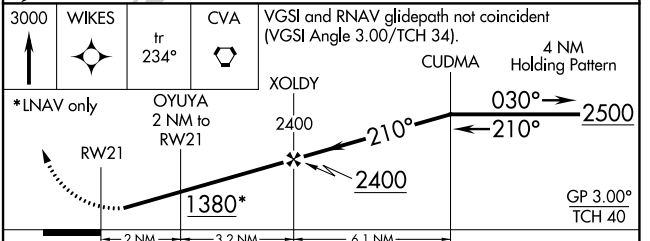
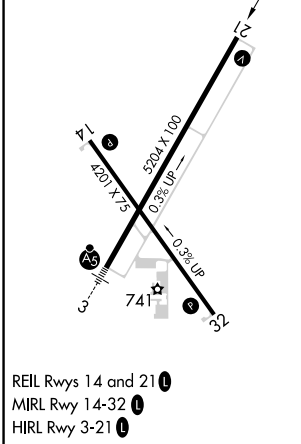
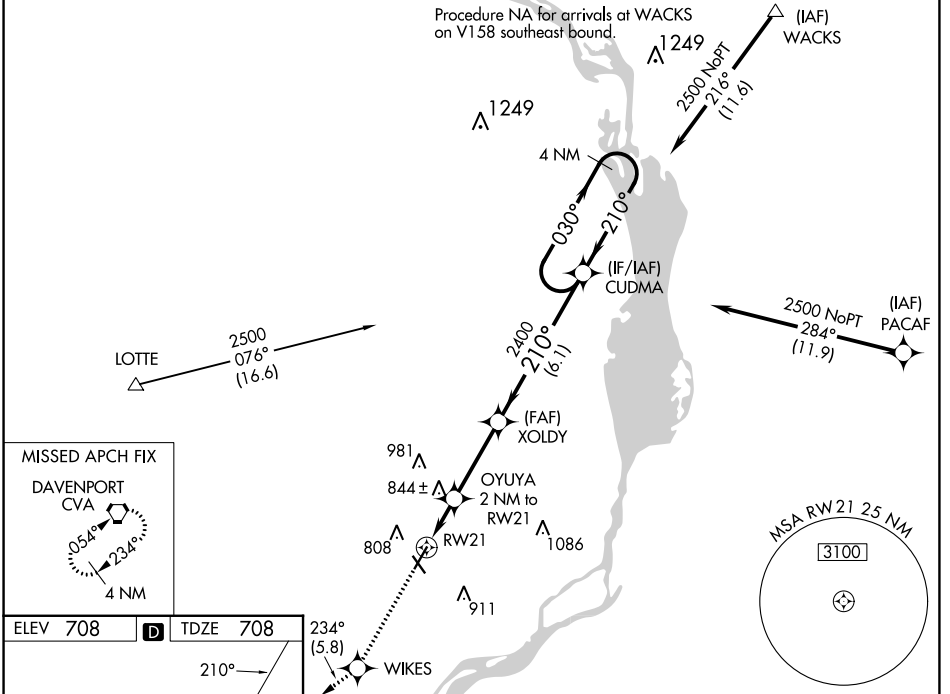
# RNAV (GPS) RWY 21

CLINTON MUNI (CWI)

**⚠** Rwy 21 helicopter visibility reduction below ¾ SM NA. Baro-VNAV NA when using Davenport altimeter setting. For uncompensated Baro-VNAV systems, LNAV/VNAV NA below -16°C (4°F) or above 54°C (130°F). DME/DME RNP-0.3 NA. When local altimeter setting not received, use Davenport altimeter setting: increase all DA 47 feet and all MDA 60 feet. Increase LNAV Cat C visibility ¼ mile.

**MISSED APPROACH:** Climb to 3000 direct WIKES and on track 234° to CVA VORTAC and hold.

AWOS-3PT <b>125.525</b>	QUAD CITY APP CON ★ <b>125.95 257.8</b>	CLNC DEL <b>118.5 0</b>	UNICOM <b>122.8</b> (CTAF)
----------------------------	--	----------------------------	-------------------------------



CATEGORY	A	B	C	D
LPV DA	958-1 250 (300-1)			NA
LNAV/VNAV DA	958-1 250 (300-1)			NA
LNAV MDA	1100-1	392 (400-1)	1100-1½ 392 (400-1½)	NA
<b>C</b> CIRCLING	1140-1 432 (500-1)	1240-1 532 (600-1)	1240-1½ 532 (600-1½)	NA

NC-3, 22 FEB 2024 to 21 MAR 2024

NC-3, 22 FEB 2024 to 21 MAR 2024