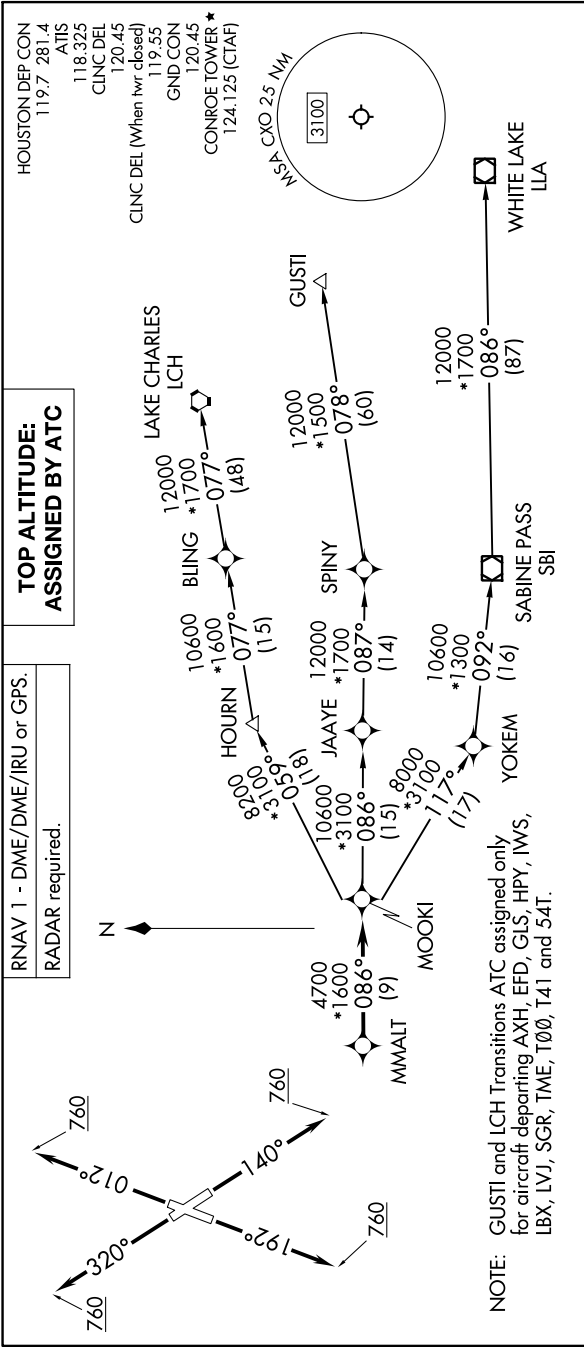


# MMALT SEVEN DEPARTURE (RNAV)

HOUSTON, TEXAS

SC-5, 22 FEB 2024 to 21 MAR 2024



HOUSTON DEP CON  
119.7 281.4  
ATIS  
118.325  
CINC DEL  
120.45  
CINC DEL (When twr closed)  
119.55  
GND CON  
120.45  
CONROE TOWER \*  
124.125 (CTAF)

**TOP ALTITUDE:  
ASSIGNED BY ATC**

RNAV 1 - DME/DME/IRU or GPS.  
RADAR required.

### DEPARTURE ROUTE DESCRIPTION

**TAKEOFF RUNWAY 1:** Climb on heading 012° to 760, for RADAR vectors to MMALT, thence. . . .  
**TAKEOFF RUNWAY 14:** Climb on heading 140° to 760, for RADAR vectors to MMALT, thence. . . .  
**TAKEOFF RUNWAY 19:** Climb on heading 192° to 760, for RADAR vectors to MMALT, thence. . . .  
**TAKEOFF RUNWAY 32:** Climb on heading 320° to 760, for RADAR vectors to MMALT, thence. . . .

. . . on track 086° to MOOKI, then on (transition). Maintain ATC assigned altitude.  
 Expect filed altitude 10 minutes after departure.

GUSTI TRANSITION (MMALT7.GUSTI)  
LAKE CHARLES TRANSITION (MMALT7.LCH)  
WHITE LAKE TRANSITION (MMALT7.LLA)

TAKEOFF MINIMUMS  
 Rwys 1, 14, 19, 32: Standard with  
 minimum climb of 500'/NM to 760.

NOTE: Chart not to scale.

SC-5, 22 FEB 2024 to 21 MAR 2024