

APP CRS	Rwy Idg	3800
304°	TDZE	1948
	Apt Elev	1950

RNAV (GPS) RWY 30

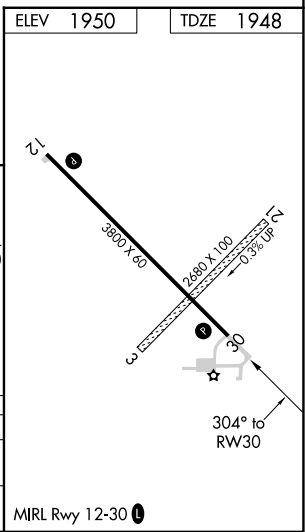
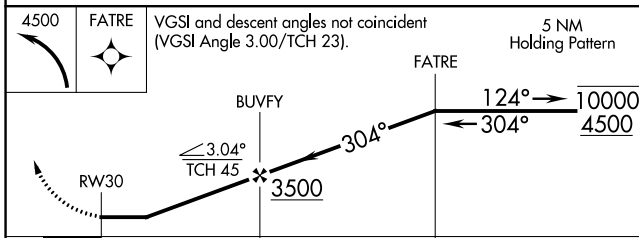
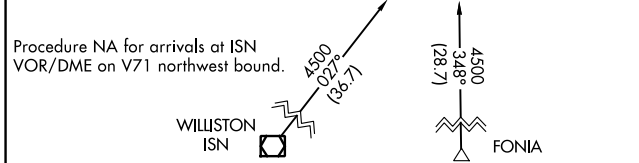
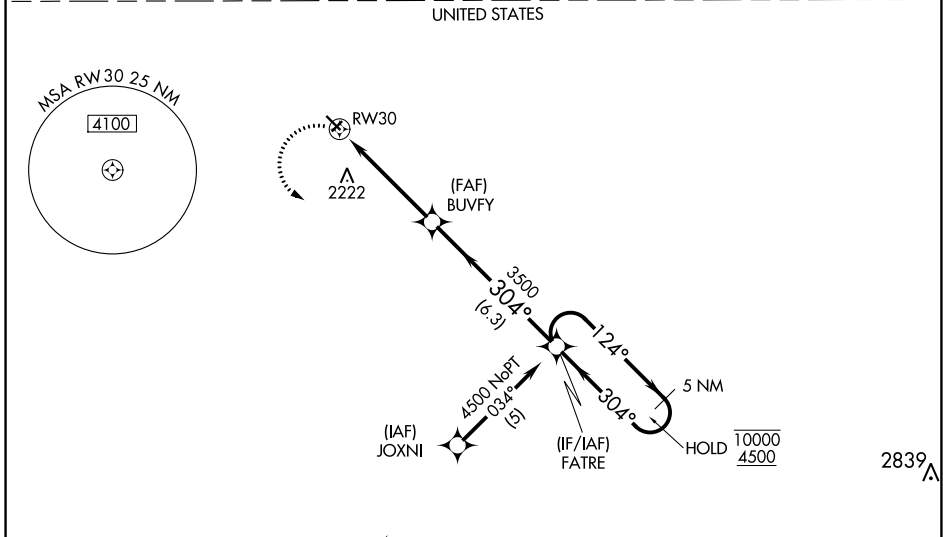
CROSBY MUNI (D50)

RNP APCH

▼ Circling NA to Rwys 3 and 21. Circling Rwy 12 NA at night.
 ▲ Rwy 30 helicopter visibility reduction below 1 SM NA.

MISSED APPROACH: Climbing left turn to 4500 direct FATRE and hold.

AWOS-3 118.025	SALT LAKE CITY CENTER 126.85 305.2	CTAF 122.9 0
--------------------------	--	------------------------



CATEGORY	A	B	C	D
LNVA MDA	2560-1	612 (700-1)	2560-1¾ 612 (700-1¾)	2560-2 612 (700-2)
C CIRCLING	2560-1	610 (700-1)	2560-1¾ 610 (700-1¾)	2640-2¼ 690 (700-2¼)

NC-1, 22 FEB 2024 to 21 MAR 2024

NC-1, 22 FEB 2024 to 21 MAR 2024