


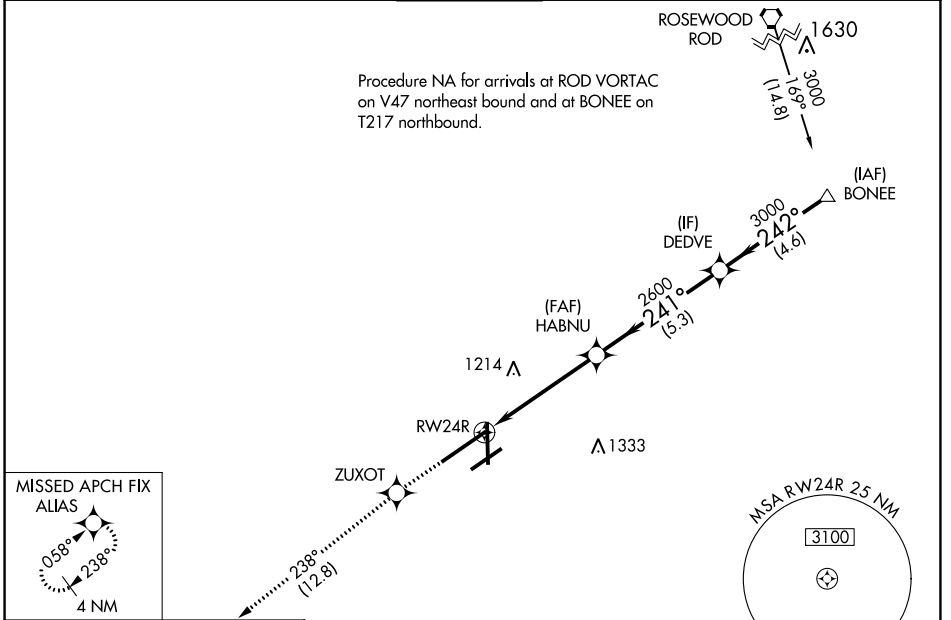
WAAS CH 66013 W24B	APP CRS 241°	Rwy Idg 10900 TDZE 997 Apt Elev 1009
--	------------------------	---

RNAV (GPS) Z RWY 24R

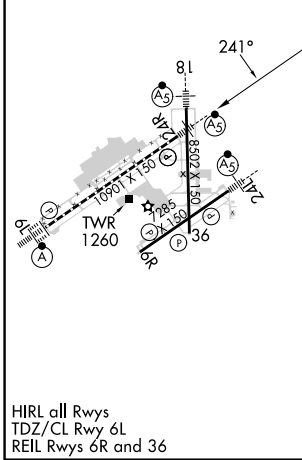
JAMES M COX DAYTON INTL (DAY)

RNP APCH.	<p>▼ For uncompensated Baro-VNAV systems, LNAV/VNAV NA below -19°C or above 54°C. Simultaneous approach authorized. LNAV procedure NA during simultaneous operations. Use of FD or AP required during simultaneous operations. For inop ALS, increase LNAV/VNAV all Cats visibility to RVR 4500.</p>	<p>MALSR</p> 	<p>MISSED APPROACH: Climb to 3000 direct ZUXOT and on track 238° to ALIAS and hold.</p>
-----------	--	--	---

ATIS 125.8	COLUMBUS APP CON 118.425 323.15	DAYTON TOWER 119.9 257.7	GND CON 121.9	CLNC DEL 121.75
----------------------	---	------------------------------------	-------------------------	---------------------------



ELEV 1009	D	TDZE 997
-----------	----------	----------



3000	ZUXOT	tr 238°	ALIAS	HABNU	DEDVE	BONEE
	↑	✧	✧	✧	✧	✧
*LNAV only.		*1.2 NM to RW24R				
	RW24R	2600	2600	3000	3000	GP 3.00° TCH 55
	1.2 NM	3.7 NM	5.3 NM	4.6 NM		
CATEGORY	A	B	C	D		
LPV DA		1203/24	206 (200-½)			
LNAV/VNAV DA		1294/24	297 (300-½)			
LNAV MDA	1440/24	443 (500-½)	1440/45	443 (500-¾)		
C CIRCLING	1580-1	571 (600-1)	1580-1½ 571 (600-1½)	1640-2 631 (700-2)		