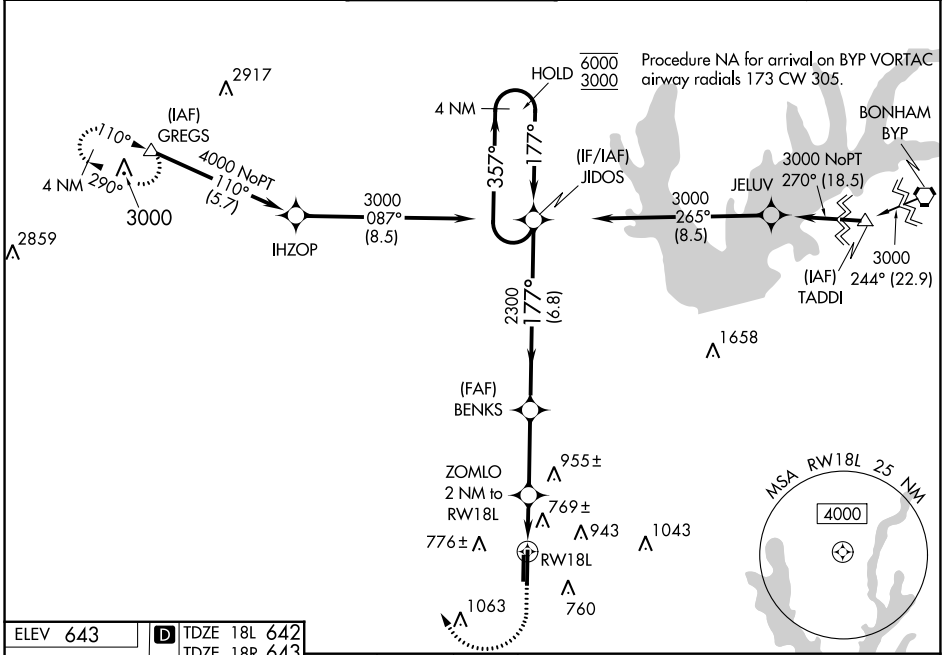


WAAS CH 82143 W18A	APP CRS 177°	Rwy Idg TDZE Apt Elev	18L 6502	18R 5003 643 643
--	------------------------	-----------------------------	--------------------	--

RNAV (GPS) RWY 18L

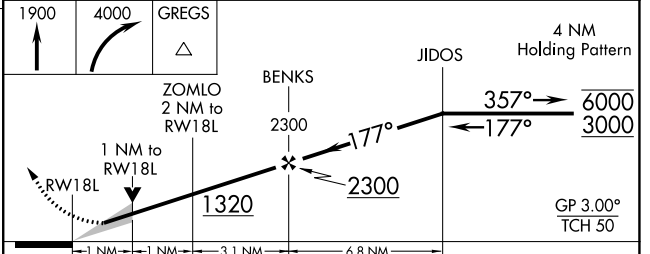
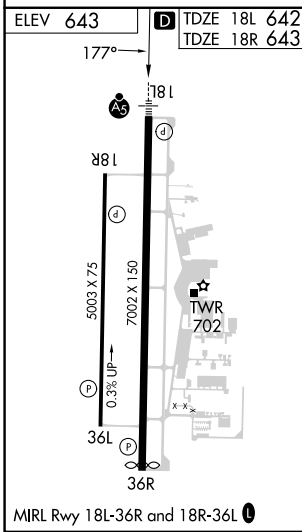
DENTON ENTERPRISE (D'TO)

RNP APCH-GPS.		MALSRL AS	MISSED APPROACH: Climb to 1900 then climbing right turn to 4000 direct GREGS and hold.				
<p>⚠ For uncompensated Baro-VNAV systems, LNAV/VNAV NA below -9°C or above 54°C. For inop ALS, increase LNAV/VNAV all Cats visibility to 3/8 SM, and LNAV Cats C and D to 1 SM.</p>			ATIS 119.325	REGIONAL APP CON 118.1 306.95	DENTON TOWER* 119.95 (CTAF) 0	GND CON 123.95	CLNC DEL 123.95



SC-2, 22 FEB 2024 to 21 MAR 2024

SC-2, 22 FEB 2024 to 21 MAR 2024



CATEGORY	A	B	C	D
LPV DA		842-1/2	200 (200-1/2)	
LNAV/VNAV DA		950-1/2	308 (400-1/2)	
LNAV MDA	1020-1/2 378 (400-1/2)		1020-3/4 378 (400-3/4)	
SIDESTEP 18R	1100-1 457 (500-1)		1100-1 1/2 457 (500-2)	1100-2 457 (500-2)
C CIRCLING	1100-1 457 (500-1)	1260-1 617 (700-1)	1380-2 737 (800-2)	1380-2 1/4 737 (800-2 1/4)