

(CLVIN2.CLVIN) 21112

AL-119 (FAA)

DETROIT METRO WAYNE COUNTY (DTW)

CLVIN TWO DEPARTURE (RNAV)

Departure Routes

DETROIT, MICHIGAN

**TOP ALTITUDE:
17000**

D-ATIS 118.125

CLNC DEL 120.65

CPDLC

GND CON

121.8 (NW) 119.45 (NE)

132.725 (SW) 119.25 (SE)

METRO TOWER

118.4 317.725 (Rwys 3L/R, 21L/R, 27R)

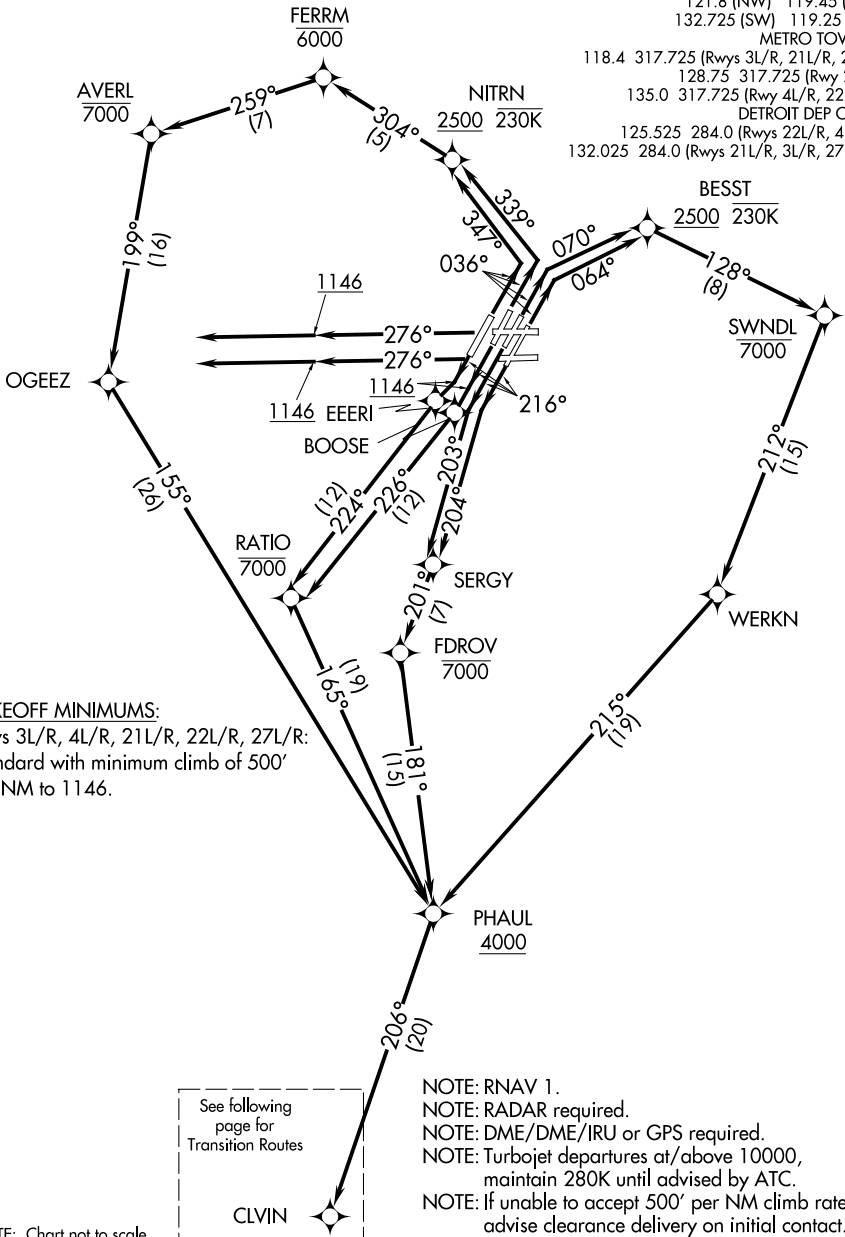
128.75 317.725 (Rwy 27L)

135.0 317.725 (Rwy 4L/R, 22L/R)

DETROIT DEP CON

125.525 284.0 (Rwys 22L/R, 4L/R)

132.025 284.0 (Rwys 21L/R, 3L/R, 27L/R)



TAKEOFF MINIMUMS:

Rwys 3L/R, 4L/R, 21L/R, 22L/R, 27L/R:
Standard with minimum climb of 500'
per NM to 1146.

See following page for
Transition Routes

- NOTE: RNAV 1.
- NOTE: RADAR required.
- NOTE: DME/DME/IRU or GPS required.
- NOTE: Turbojet departures at/above 10000, maintain 280K until advised by ATC.
- NOTE: If unable to accept 500' per NM climb rate, advise clearance delivery on initial contact.

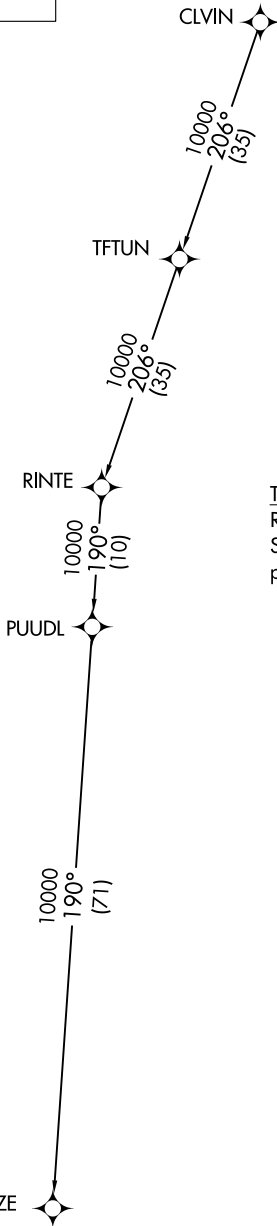
NOTE: Chart not to scale.

EC-1, 22 FEB 2024 to 21 MAR 2024

EC-1, 22 FEB 2024 to 21 MAR 2024

TOP ALTITUDE:
17000

D-ATIS 118.125
 CLNC DEL 120.65
 CPDLC
 GND CON
 121.8 (NW) 119.45 (NE)
 132.725 (SW) 119.25 (SE)
 METRO TOWER
 118.4 317.725 (Rwys 3L/R, 21L/R, 27R)
 128.75 317.725 (Rwy 27L)
 135.0 317.725 (Rwy 4L/R, 22L/R)
 DETROIT DEP CON
 125.525 284.0 (Rwys 22L/R, 4L/R)
 132.025 284.0 (Rwys 21L/R, 3L/R, 27L/R)



TAKEOFF MINIMUMS:

Rwys 3L/R, 4L/R, 21L/R, 22L/R, 27L/R:
 Standard with minimum climb of 500'
 per NM to 1146.

NOTE: RNAV 1.

NOTE: RADAR required.

NOTE: DME/DME/IRU or GPS required.

NOTE: Turbojet departures at/above 10000,
maintain 280K until advised by ATC.

NOTE: If unable to accept 500' per NM climb rate,
advise clearance delivery on initial contact.

NOTE: Chart not to scale.

(NARRATIVE ON FOLLOWING PAGE)

EC-1, 22 FEB 2024 to 21 MAR 2024

EC-1, 22 FEB 2024 to 21 MAR 2024