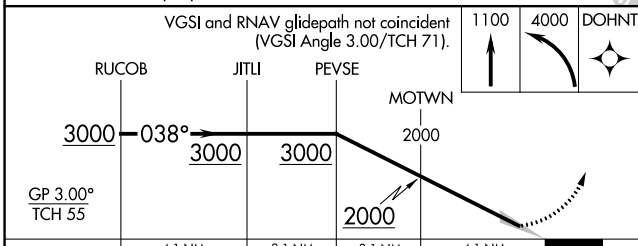
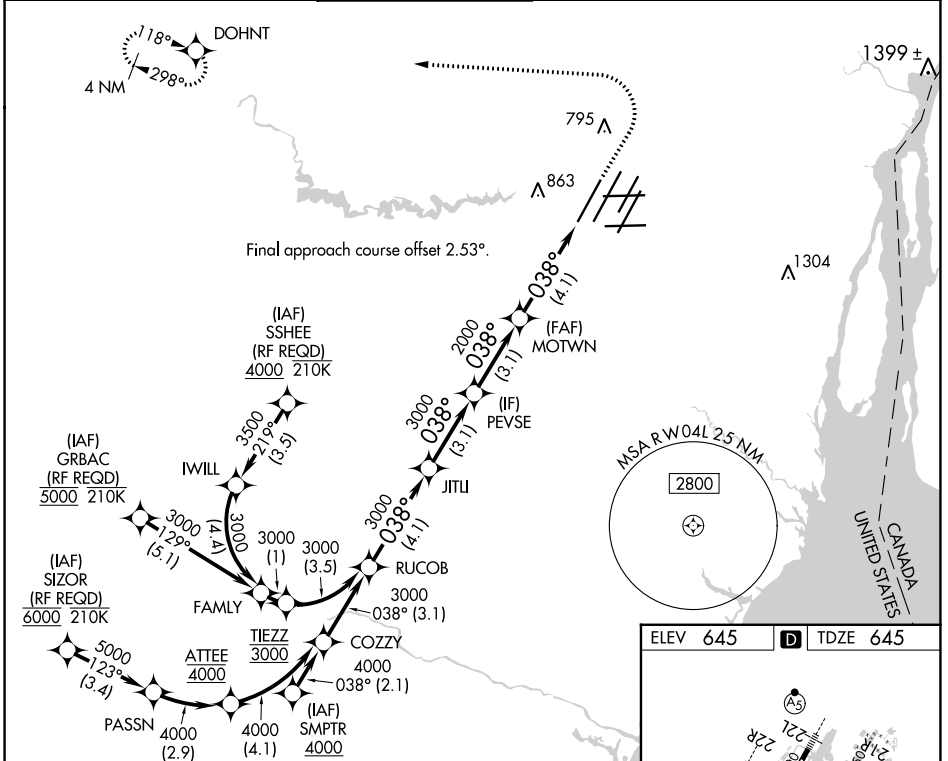


APP CRS	Rwy Idg	<b>10000</b>
<b>038°</b>	TDZE	<b>645</b>
	Apt Elev	<b>645</b>

# RNAV (RNP) U RWY 4L

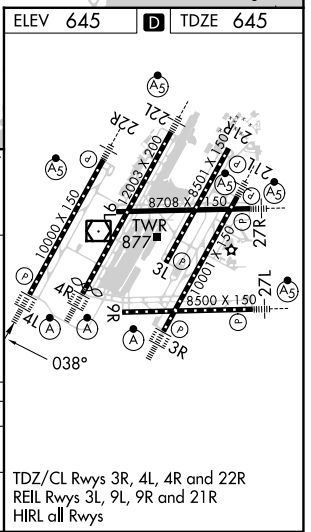
DETROIT METRO WAYNE COUNTY (DTW)

RNP AR APCH.		ALSF-2		MISSED APPROACH: Climb to 1100 then climbing left turn to 4000 direct DOHNT and hold.	
<p>Simultaneous approach authorized. For uncompensated Baro-VNAV systems, procedure NA below -19°C or above 54°C. For inop ALS, increase RNP 0.30 DA all Cats visibility to RVR 6000.</p>					
D-ATIS	DETROIT APP CON	METRO TOWER	GND CON	CLNC DEL	CPDLC
<b>133.675</b>	<b>124.05 284.0</b>	<b>135.0 317.725</b>	<b>121.8 (NW) 119.45 (NE) 132.725 (SW) 119.25 (SE)</b>	<b>120.65</b>	



CATEGORY	A	B	C	D
RNP 0.30 DA	1058/40 413 (500-¾)			

**AUTHORIZATION REQUIRED**



EC-1, 22 FEB 2024 to 21 MAR 2024

EC-1, 22 FEB 2024 to 21 MAR 2024