

WAAS CH <b>72917</b> <b>W07A</b>	APP CRS <b>074°</b>	Rwy Idg TDZE Apt Elev	<b>7299</b> <b>1460</b> <b>1478</b>
--	------------------------	-----------------------------	---

# RNAV (GPS) RWY 7R

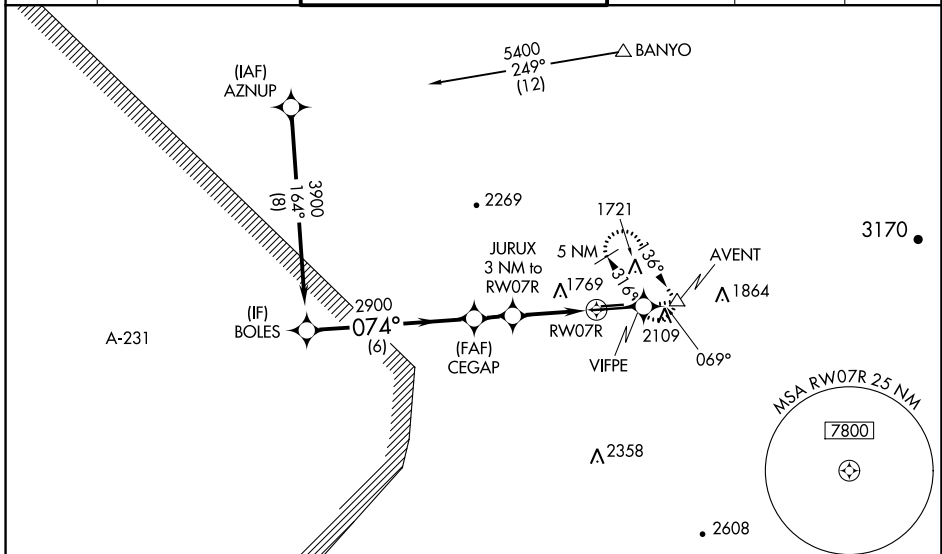
PHOENIX DEER VALLEY (DVT)

RNP APCH - GPS.

**⚠** When VGSI inop, Circling Rwy 25R NA at night. When local altimeter setting not received, use Scottsdale altimeter setting: increase LPV DA to 1822 feet and all visibilities 1/8 SM, increase LNAV/VNAV DA to 2160 feet and all visibilities 1/8 SM, increase all MDAs 40 feet and increase Circling Cat B visibility 1/4 SM. For uncompensated Baro-VNAV systems, LNAV/VNAV NA below -17°C or above 54°C. Baro VNAV and VDP NA when using Scottsdale altimeter setting. Circling NA north of Rwy 7R-25L and VDP.

MISSED APPROACH: Climb to 5000 direct VIFPE and track 069° to AVENT and hold, continue climb-in-hold to 5000.

ATIS <b>126.5</b>	PHOENIX APP CON <b>120.7 239.0</b>	DEER VALLEY TOWER * <b>118.4 (070°-250°) (CTAF)</b> <b>120.2 (251°-069°)</b>	GND CON <b>121.8</b>	CLNC DEL <b>123.9</b>	UNICOM <b>122.95</b>
----------------------	---------------------------------------	--	-------------------------	--------------------------	-------------------------



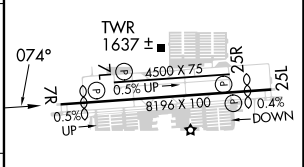
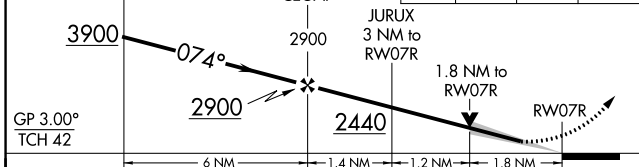
SW-4, 22 FEB 2024 to 21 MAR 2024

SW-4, 22 FEB 2024 to 21 MAR 2024

ELEV 1478	<b>D</b> TDZE 1460
-----------	--------------------

VGSI and RNAV glidepath not coincident (VGSI Angle 3.00/TCH 46).

5000	VIFPE	tr 069°	AVENT
------	-------	---------	-------



CATEGORY	A	B	C	D
LPV DA		1795-1 1/8	335 (400-1 1/8)	
LNAV/VNAV DA		2133-2 1/2	673 (700-2 1/2)	
LNAV MDA	2060-1	600 (600-1)	2060-1 3/4	600 (600-1 3/4)
CIRCLING	2400-1 1/4 922 (1000-1 1/4)	2420-1 1/4 942 (1000-1 1/4)	2580-3 1102 (1200-3)	2700-3 1222 (1300-3)

MIRL Rwy 7L-25R and 7R-25L  
REIL Rwy 7L, 7R, 25L, and 25R