

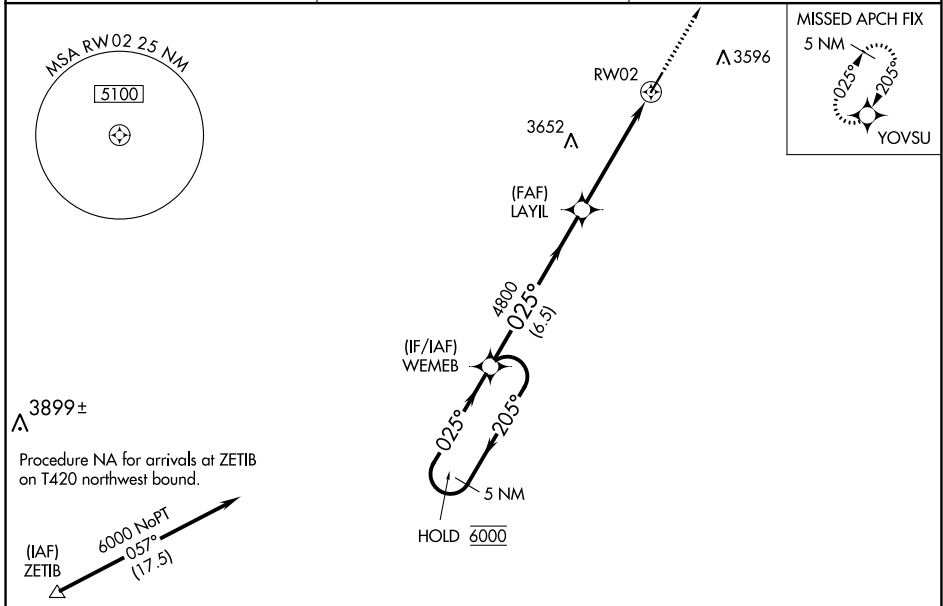
WAAS CH 82126 W02A	APP CRS 025°	Rwy Idg 4698 TDZE 3205 Apt Elev 3205
--	------------------------	---

RNAV (GPS) RWY 2

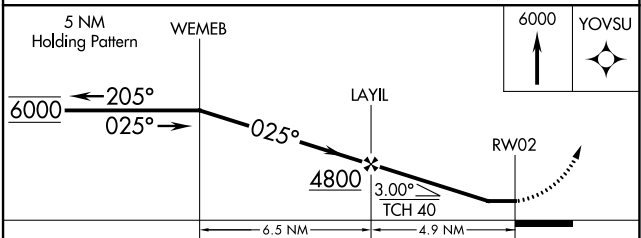
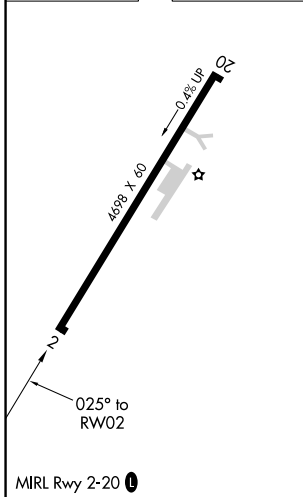
GRUVER MUNI (E19)

RNP APCH - GPS.		MISSED APPROACH: Climb to 6000 direct YOVSU and hold.
<p>▼ Procedure NA at night. Rwy 2 helicopter visibility reduction below 1 SM NA. Use Guymon altimeter setting, when not received, use Borger altimeter setting and increase all MDAs 40 feet.</p> <p>▲ NA</p>		

GUY ASOS 119.925	ALBUQUERQUE CENTER 127.85 285.475	CTAF 122.9 0
----------------------------	---	------------------------



ELEV 3205	TDZE 3205
-----------	-----------



CATEGORY	A	B	C	D
LP MDA	3780-1	575 (600-1)		NA
LNAV MDA	3780-1	575 (600-1)		NA
C CIRCLING	3780-1	575 (600-1)		NA

SC-2, 22 FEB 2024 to 21 MAR 2024

SC-2, 22 FEB 2024 to 21 MAR 2024

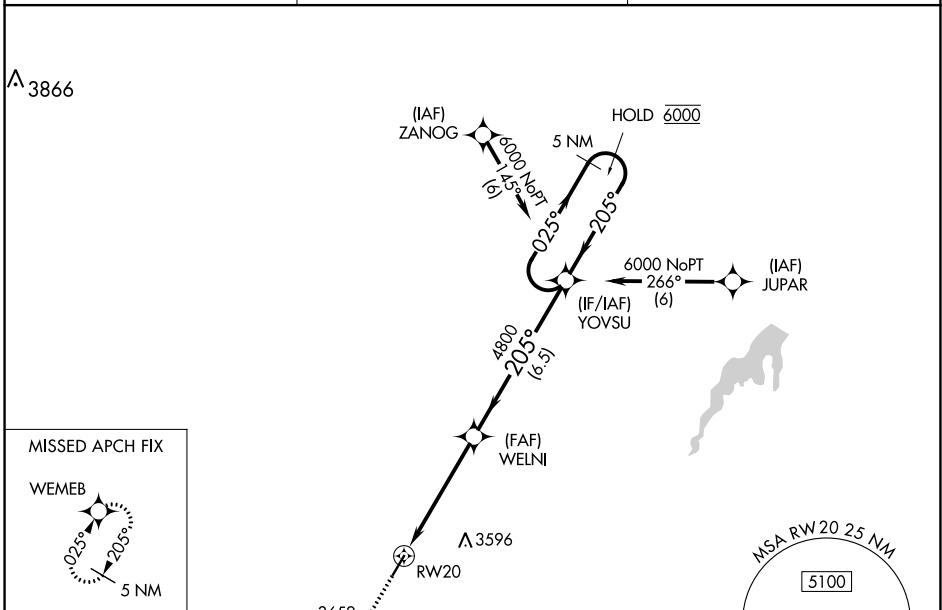
WAAS CH 42826 W20A	APP CRS 205°	Rwy Idg TDZE Apt Elev	4698 3196 3205
--	------------------------	-----------------------------	---

RNAV (GPS) RWY 20

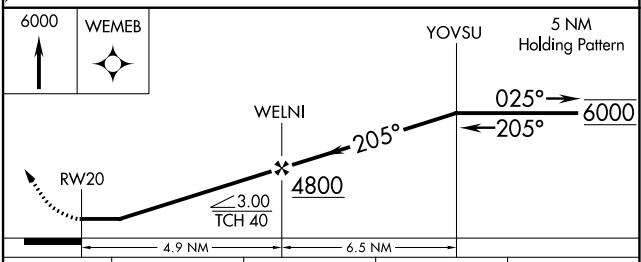
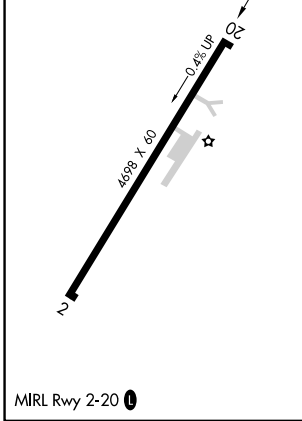
GRUVER MUNI (E19)

RNP APCH - GPS.		MISSED APPROACH: Climb to 6000 direct WEMEB and hold.
▼ ▲ NA	Procedure NA at night. Rwy 20 helicopter visibility reduction below 1 SM NA. Use Guymon altimeter setting, when not received, use Borger altimeter setting and increase all MDA's 40 feet.	

GUY ASOS 119.925	ALBUQUERQUE CENTER 127.85 285.475	CTAF 122.9
----------------------------	---	----------------------



ELEV 3205	TDZE 3196
-----------	-----------



CATEGORY	A	B	C	D
LP MDA	3720-1	524 (600-1)		NA
LNAV MDA	3720-1	524 (600-1)		NA
CIRCLING	3720-1 515 (600-1)	3740-1 535 (600-1)		NA

SC-2, 22 FEB 2024 to 21 MAR 2024

SC-2, 22 FEB 2024 to 21 MAR 2024