

ANCHORAGE, ALASKA

# RNAV (GPS) RWY 6

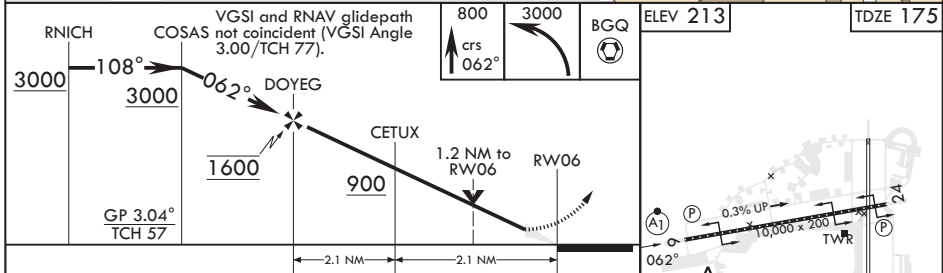
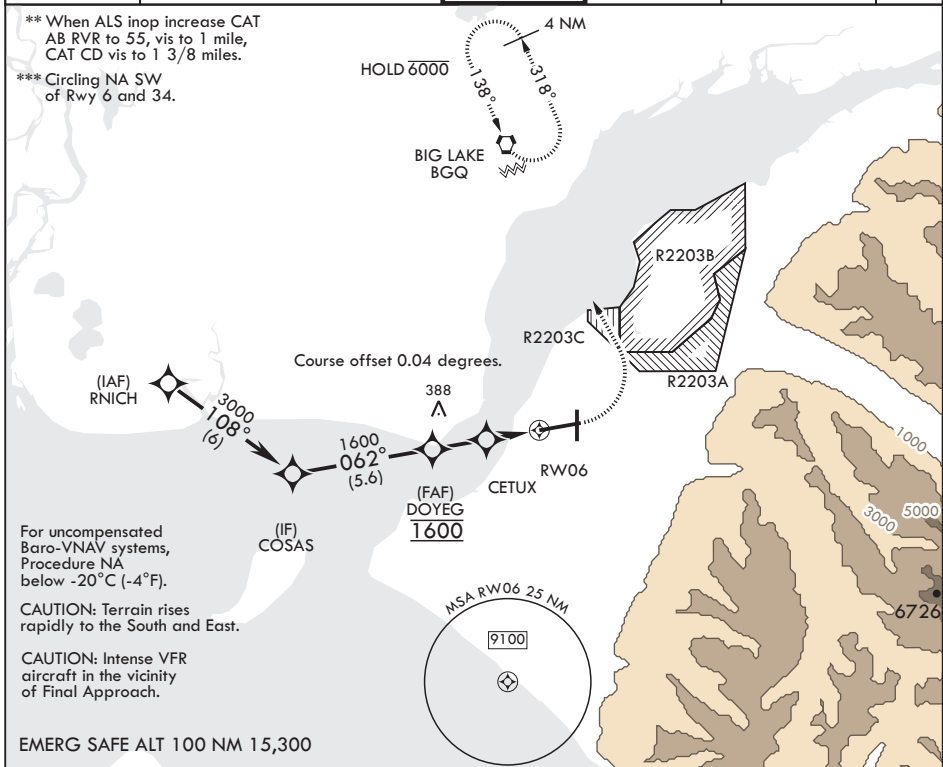
APCH CRS	Rwy Idg	10,000
062°	TDZE	175
	Arprt Elev	213

(-USAF)

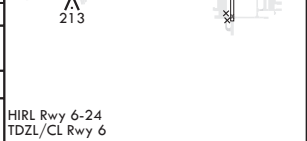
ELMENDORF AFB (PAED)

RNP APCH	ALSF-1	MISSED APPROACH: Climb to 800 then climbing left turn to 3000 direct BGQ and hold.
GPS required.		
* When ALS inop increase RVR to 60, vis to 1 1/8 miles.		

ATIS*	ANCHORAGE APP CON/DEP CON	TOWER	GND CON	CLNC DEL	PAR
124.3 273.5	118.6 290.5	127.2 352.05	121.8 275.8	128.8 306.925	



CATEGORY	A	B	C	D
LNAV/VNAV DA*	561/35	386	(400- <sup>3</sup> / <sub>4</sub> )	576/40 401 (400- <sup>3</sup> / <sub>4</sub> )
LNAV MDA**	640/24 465 (500- <sup>1</sup> / <sub>2</sub> )		640/50 465 (500-1)	
CIRCLING***	840-1 627 (700-1)		920-2 707 (800-2)	1020-2 <sup>1</sup> / <sub>2</sub> 807 (900-2 <sup>1</sup> / <sub>2</sub> )



ANCHORAGE, ALASKA  
Amdt 5 25JAN24

61°15'N - 149°48'W

ELMENDORF AFB (PAED)

# RNAV (GPS) RWY 6

AK, 25 JAN 2024 to 21 MAR 2024

AK, 25 JAN 2024 to 21 MAR 2024