

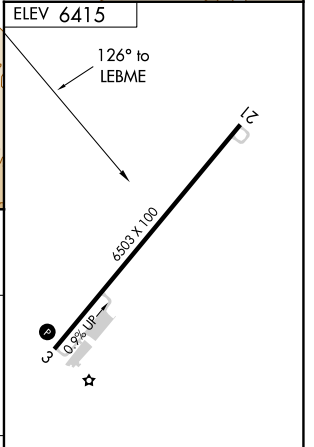
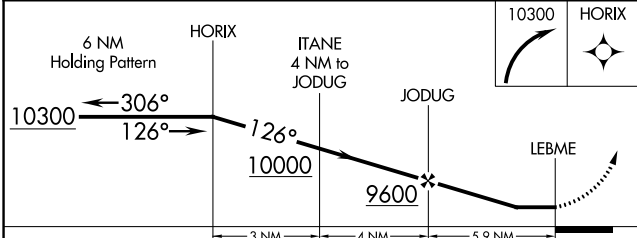
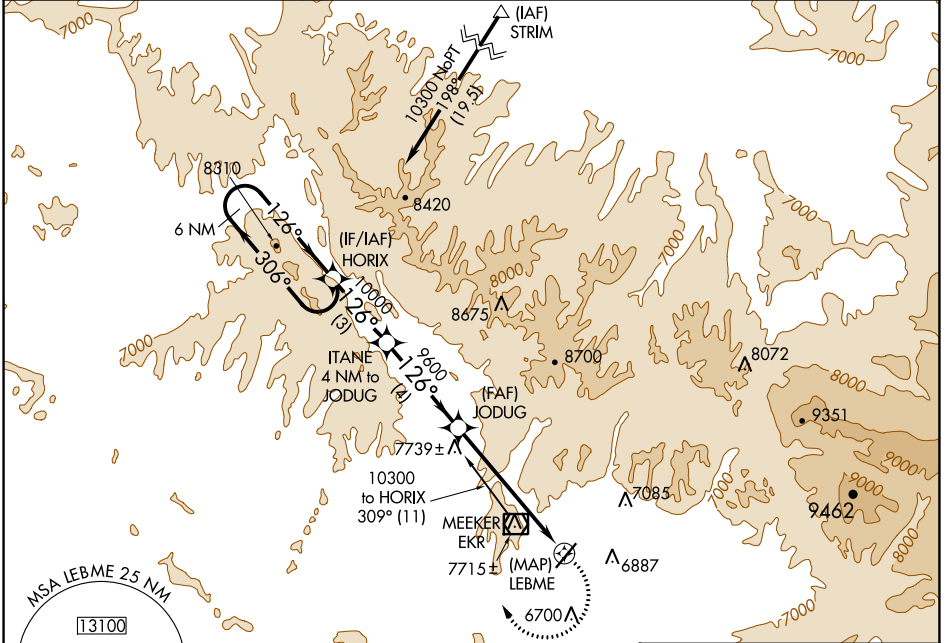
APP CRS	Rwy Idg	N/A
126°	TDZE	N/A
	Apt Elev	6415

RNAV (GPS)-B

MEEKER COULTER FLD (EEO)

⚠ DME/DME RNP-0.3 NA. Circling not authorized west of Rwy 3-21. Night Landing: Rwy 21 NA.
⚠ Helicopter visibility reduction below 1 SM NA.
⚠ MISSED APPROACH: Climbing right turn to 10300 direct HORIX WP and hold.

ASOS 135.525	DENVER CENTER 134.5 327.8	UNICOM 122.8 (CTAF) 📶
------------------------	-------------------------------------	--



CATEGORY	A	B	C	D
CIRCLING	7960-1¼ 1545 (1600-1¼)	7960-1½ 1545 (1600-1½)	8440-3 2025 (2100-3)	NA

MIRL Rwy 3-21 **📶**
 REIL Rwys 3 and 21 **📶**

SW-1, 22 FEB 2024 to 21 MAR 2024

SW-1, 22 FEB 2024 to 21 MAR 2024